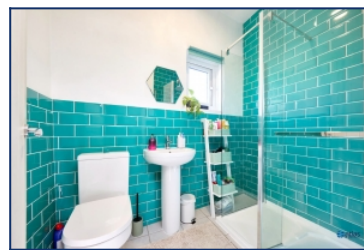


## Wrights Terrace, Wavertree, L15



**For Sale - £140,000 Offers Over**

### Key Features

- 2 Bedroom 1 Bathroom End of Terrace House
- EPC Rating: E
- Charming Home Ideal for First-time Buyers
- Elegant Shaker-style Kitchen Featuring an Induction Hob, Electric Oven, Integrated Fridge/freezer, and Stylish Splashback Tiling
- Spacious and Inviting Living Area
- Beautifully Decorated with a Timeless, Traditional Aesthetic
- Versatile Space Off the Kitchen, Perfect for Dining or a Home Office
- Contemporary Wood-effect Flooring Throughout the Ground Floor
- Classic Tiled Bathroom with a Walk-in Shower
- Double Glazing and Gas Central Heating for Year-round Comfort
- Prime Location with Excellent Amenities Just a 2-minute Walk from Picton Road
- Close to Green Spaces, Including Wavertree Sports Park ('the Mystery'), Only a 5-minute Walk Away

### Further Details

- Tenure: Freehold
- No. of Floors: 2
- Floor Space: 64 square metres / 686 square feet
- Local Authority: Liverpool City Council
- Parking: On Street
- Outside Space: Back Yard
- Heating/Energy: Gas Central Heating, Double Glazing
- Appliances/White Goods: Electric Oven, Electric Hob (Induction), Fridge/Freezer

### Description

Brought to the market by Atlas Estate Agents, this delightful two-bedroom end-of-terrace home is a perfect blend of classic charm and modern convenience. Nestled on Wrights Terrace in the ever-popular Wavertree, L15, this inviting property is ideal for first-time buyers seeking a stylish yet cosy retreat.

Step inside and discover a beautifully decorated home with a timeless aesthetic. The spacious reception room provides a welcoming atmosphere, enhanced by contemporary wood-effect flooring that flows seamlessly throughout the ground floor. The elegant shaker-style kitchen is a true highlight, featuring an induction hob, electric oven, integrated fridge/freezer, and eye-catching splashback tiling. Just beyond, a versatile space offers the perfect setting for dining, a home office, or even a cosy reading nook.

Upstairs, two well-proportioned bedrooms provide peaceful sanctuaries, while the classic tiled bathroom boasts a sleek walk-in shower, offering both style and practicality. Double glazing and gas central heating ensure year-round comfort.

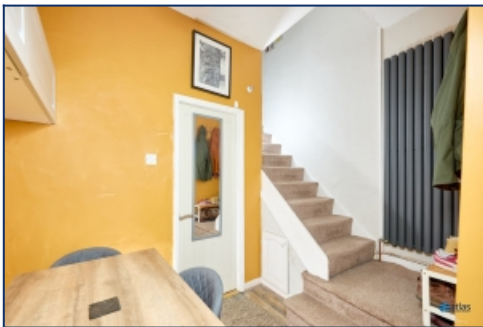
Positioned just a two-minute stroll from the bustling amenities of Picton Road and a short five-minute walk from the open green spaces of Wavertree Sports Park ('The Mystery'), this home enjoys an enviable location with everything you need close at hand.

Offering charm, comfort, and convenience in equal measure, this is a wonderful opportunity to secure a home in one of Wavertree's most desirable pockets.

## Additional Images



Bedroom 1



Dining Area



Lounge



Lounge



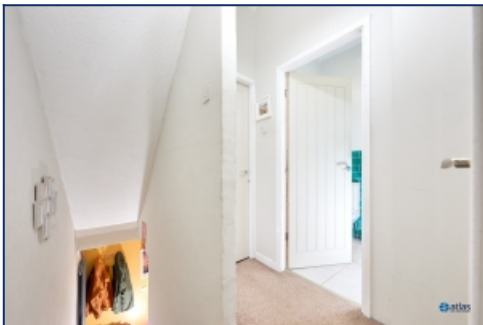
Lounge



Lounge



Kitchen



Landing



Bedroom 2



Rear Yard

## Floor Plans

