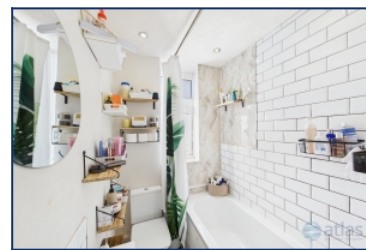
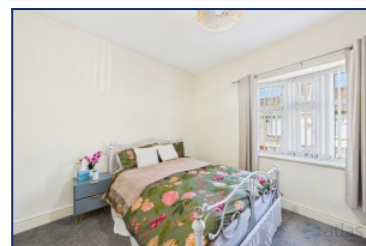


## Standale Road, Wavertree, L15



**For Sale - £140,000 Offers in Excess of**

### Key Features

- 2 Bedroom 1 Bathroom Terraced House
- EPC Rating: F
- Sought-After Wavertree L15 Location
- Open-Plan Living and Dining Area
- Contemporary Fitted Kitchen
- Convenient Downstairs W.C.
- Two Generously Sized Double Bedrooms
- Modern Bathroom Accessible from Second Bedroom
- Short Walk to Wavertree Technology Park
- Low-Maintenance Rear Yard
- Close to Green Spaces, Including the Mystery
- Excellent Local Schools and Transport Links

### Further Details

- Tenure: Freehold
- No. of Floors: 2
- Floor Space: 591 square feet / 55 square metres
- Council Tax Band: A
- Local Authority: Liverpool City Council
- Parking: On Street
- Outside Space: Back Yard
- Heating/Energy: Gas Central Heating, Double Glazing
- Appliances/White Goods: Electric Cooker, Electric Hob (Ceramic)

### Description

Brought to the market by Atlas Estate Agents, this charming terraced home on Standale Road, Wavertree, L15, offers a wonderful blend of style, convenience and modern living.

Set across two well-planned floors, the property opens into a bright and welcoming reception space, where the open-plan living and dining area creates a versatile setting for both everyday life and entertaining. At the heart of the home sits a contemporary fitted kitchen, designed with both practicality and aesthetics in mind, while a convenient downstairs W.C. adds to the home's functionality.

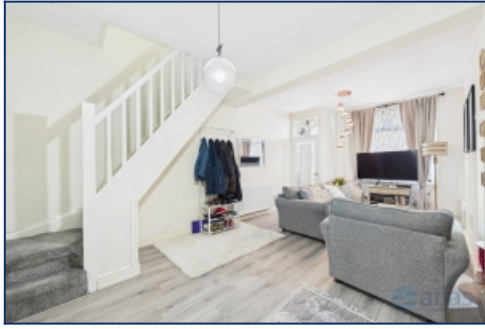
Upstairs, two generously sized double bedrooms provide comfortable and flexible accommodation. The second bedroom benefits from direct access to a modern bathroom, combining sleek design with everyday comfort.

Outside, the low-maintenance rear yard offers a private space to relax or enjoy a spot of outdoor dining.

Perfectly positioned, the home is just a short stroll from Wavertree Technology Park and within easy reach of green spaces such as The Mystery. Families will appreciate the excellent local schools, while commuters benefit from superb transport links connecting the area to the city and beyond.

This is an ideal opportunity for first-time buyers, young professionals or those seeking a well-situated home in the ever-popular Wavertree, L15.

## Additional Images



Lounge



Entrance Hallway



Lounge



Lounge



Lounge



Kitchen



W.c



Bedroom



Bedroom



Yard

## Floor Plans

