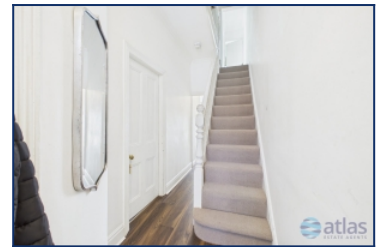
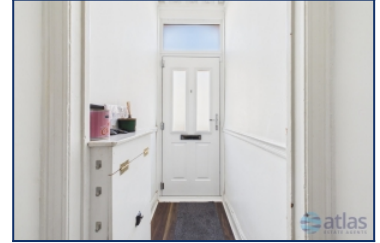


Alwyn Street, Aigburth, L17



For Sale - £270,000

Key Features

- 3 Bedroom 1 Bathroom Terraced House
- EPC Rating: D
- Stunning Open-Plan Reception and Dining Room Featuring a Bay Window and Potential for a Fireplace
- Generously Sized Kitchen with Fitted Units and Ample Storage Space
- Two Spacious Double Bedrooms Plus a Versatile Single Bedroom Ideal as a Home Office or Walk-In Wardrobe
- Modern Bathroom Fitted with a Bath and Overhead Shower
- Spacious Courtyard Offering Excellent Space for Gardening and Outdoor Entertaining
- On-Street Parking Available
- A Boarded Loft with Excellent Storage Space, Easy Ladder Access, and Fitted Power and Lighting.
- Attractive End-Terrace Property Situated in the Highly Sought-After L17 Area
- Conveniently Located Within Easy Reach of St Michaels Train Station

Further Details

- Tenure: Freehold
- No. of Floors: 2
- Floor Space: 78 square metres / 840 square feet
- Council Tax Band: A
- Local Authority: Liverpool City Council
- Ground Rent: Peppercorn
- Parking: On Street
- No. of Parking Spaces: 1
- Outside Space: Back Yard
- Heating/Energy: Gas Central Heating

Description

Set within the ever-popular suburb of Aigburth, this attractive end-terrace home on Alwyn Street offers beautifully balanced living space, characterful charm and exceptional convenience, all brought to the market by Atlas Estate Agents, with the added benefit of no onward chain.

Arranged across two thoughtfully designed floors, the property welcomes you with a stunning open-plan reception and dining room, bathed in natural light from an elegant bay window. The generous proportions create a warm and sociable heart to the home, while the potential for a feature fireplace offers an exciting opportunity to add further character and individuality.

To the rear, the spacious kitchen has been designed with practicality in mind, boasting fitted units, plentiful worktop space and ample storage, making it perfectly suited to both everyday family living and entertaining alike.

Upstairs, the accommodation continues to impress with two generously sized double bedrooms alongside a versatile third room, ideal as a nursery, home office or even a stylish walk-in wardrobe. A contemporary bathroom completes the first floor, fitted with a modern suite including a bath with overhead shower.

Externally, the property benefits from a substantial courtyard providing excellent space for outdoor dining, gardening and summer gatherings, while on-street parking is readily available.

Perfectly positioned within easy reach of St Michaels railway station, this charming home enjoys excellent transport links alongside the vibrant cafés, green spaces and lifestyle attractions that make L17 one of Liverpool's most sought-after postcodes.

Additional Images



Reception Room



Reception Room



Dining Room



Dining Room



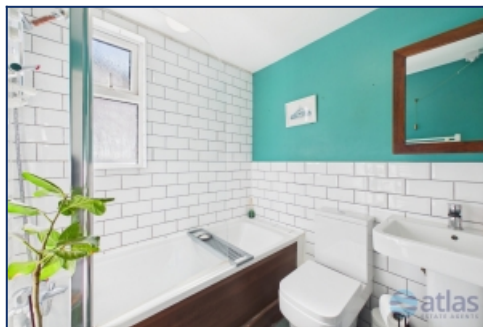
Kitchen



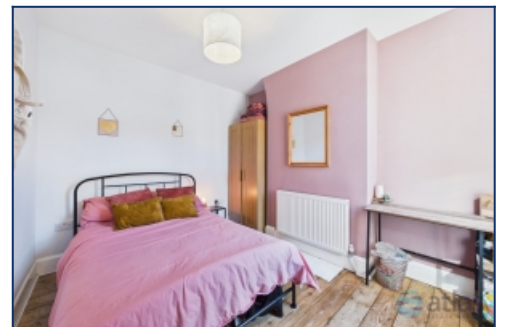
Kitchen



Kitchen



Bathroom



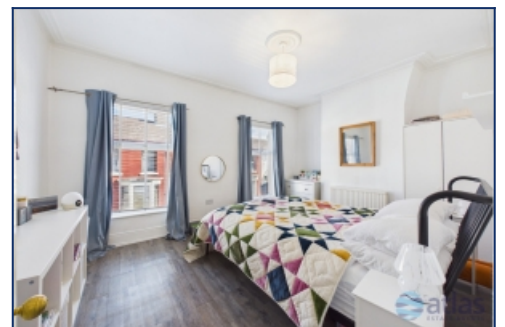
Bedroom 1



Bedroom 1



Bedroom 2



Bedroom 2



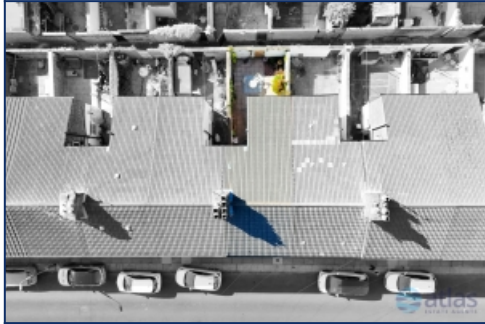
Bedroom 3



Courtyard



Courtyard



Aerial View Of Property

Floor Plans



Tel: 0151 727 2469
Fax: 0151 727 4943

Atlas Estate Agents, 2 Allerton Road,
Mossley Hill, Liverpool, L18 1LN

Email: sales@atlasestateagents.co.uk
Website: www.atlasestateagents.co.uk

These particulars are intended to give a fair and substantially correct overall description for the guidance of intending purchasers/tenants and do not constitute an offer or part of a contract. Please note that any services, heating systems or appliances have not been tested and no warranty can be given or implied as to their working order. Prospective purchasers/tenants ought to seek their own professional advice.

All descriptions, dimensions, areas, references to condition and necessary permissions for use and occupation and other details are given in good faith and are believed to be correct, but any intending purchasers/tenants should not rely on them as statements or representations of fact, but must satisfy themselves by inspection or otherwise as to the correctness of each of them.