

Barrington Road, Wavertree, L15



For Sale - £240,000 Offers Over

Key Features

- 3 Bedroom 1 Bathroom Terraced House
- EPC Rating: D
- Sought-After Wavertree L15 Location
- Moments from Green Spaces Including the Mystery and Sefton Park
- Two Spacious Reception Rooms, One Featuring a Cosy Log Burner
- Stylish, Contemporary Kitchen
- Practical Utility Area Adjacent to Kitchen
- Two Generously Sized Double Bedrooms Plus a Flexible Third Bedroom
- Modern and Well-Appointed Family Bathroom
- Delightful, Sun-Drenched Rear Yard
- Excellent Public Transport Connections
- Walking Distance to Vibrant Smithdown and Allerton Road

Further Details

- Tenure: Freehold
- No. of Floors: 2
- Floor Space: 990 square feet / 92 square metres
- Council Tax Band: A
- Local Authority: Liverpool City Council
- Parking: On Street
- Outside Space: Back Yard
- Heating/Energy: Gas Central Heating, Double Glazing
- Appliances/White Goods: Electric Oven, Gas Hob

Description

Stylish Three-Bedroom Terraced Home in the Heart of Wavertree – Brought to Market by Atlas Estate Agents

Tucked away on the ever-popular Barrington Road in the heart of Wavertree, L15, this beautifully presented three-bedroom terraced house effortlessly blends period charm with contemporary style.

Set across two well-planned floors, the property welcomes you with two generous reception rooms—the front room perfect for entertaining or relaxing, and the rear reception boasting a cosy log burner, ideal for those cooler evenings. The heart of the home lies in the stylish, modern kitchen, thoughtfully designed with sleek finishes and direct access to a practical utility area, offering everyday convenience without compromising on space.

Upstairs, you'll find two spacious double bedrooms filled with natural light, alongside a versatile third bedroom—ideal as a nursery, home office or dressing room. A well-appointed, contemporary family bathroom completes the upper floor.

Outside, a sun-drenched rear yard offers a peaceful retreat, perfect for morning coffees or summer evenings with friends.

Located in a sought-after residential area, this home is just moments from the leafy expanses of The Mystery and the iconic Sefton Park, while also being within walking distance of the lively cafes, bars and eateries of Smithdown Road and Allerton Road. Excellent public transport links make city commuting a breeze.

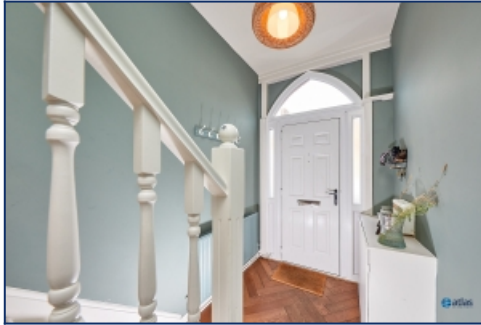
A perfect choice for professionals, young families or anyone seeking a stylish home in a vibrant, well-connected neighbourhood.

Early viewing is highly recommended.

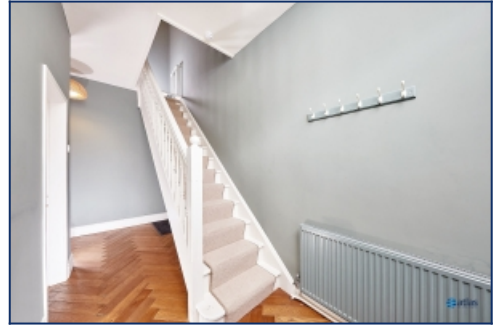
Additional Images



Yard



Hallway



Hallway



Lounge



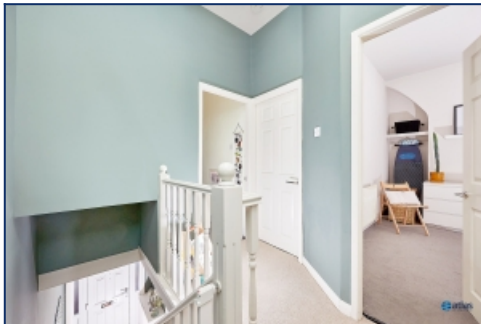
Reception Room



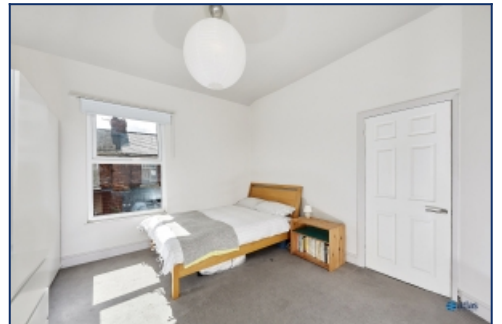
Kitchen



Utility Space



Landing



Bedroom



Bedroom



Yard

Floor Plans

