

Wavertree Nook Road, Wavertree, L15



For Sale - £350,000 Offers in Excess of

Key Features

- 3 Bedroom 1 Bathroom End of Terrace House
- EPC Rating: F
- Stylish Modern Fitted Kitchen with Integrated Appliances
- Open-Plan Dining Area with French Doors Leading to the South-Facing Garden
- Cosy Reception Room Featuring a Charming Bay Window
- Welcoming Hallway and Staircase with Contemporary Wall Panelling
- Spacious Family Bathroom with a Bath and Separate Shower
- Private South-Facing Garden with Patio Area and Mature Hedging
- Three Generously Sized Bedrooms, All Fitted with Carpets
- Convenient On-Street Parking Available
- Highly Sought-After Location in Wavertree, L15
- Fully Refurbished Throughout

Further Details

- Tenure: Freehold
- No. of Floors: 2
- Floor Space: 86 square metres / 929 square feet
- Council Tax Band: C
- Local Authority: Liverpool City Council
- Ground Rent: Peppercorn
- Parking: On Street
- Outside Space: Back Garden
- Heating/Energy: Gas Central Heating
- Appliances/White Goods: Electric Oven (Double), Gas Hob, Fridge/Freezer, Washer Dryer

Description

Brought to the market by Atlas Estate Agents, this beautifully refurbished end-of-terrace home in Wavertree Nook Road, L15, offers a stylish blend of contemporary living and comfortable family space within the ever-popular residential setting of Liverpool.

Arranged thoughtfully over two floors, the property has been fully renovated throughout to a high standard, creating a fresh and inviting home ready to move straight into. On the ground floor, a welcoming hallway with contemporary wall panelling sets the tone, leading to a cosy reception room where a charming bay window fills the space with natural light. To the rear, the home truly opens up into a stunning open-plan kitchen and dining area, complete with a stylish modern fitted kitchen, integrated appliances, and elegant French doors that spill out onto the south-facing garden—perfect for entertaining or relaxed family living.

Upstairs, the accommodation continues to impress with three generously proportioned bedrooms, each finished with soft carpeting, offering calm and comfortable retreats. The spacious family bathroom is equally well-appointed, featuring both a bath and a separate shower for added convenience.

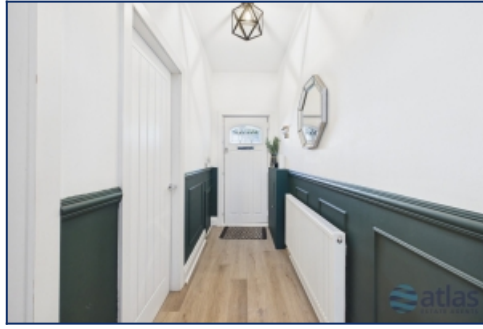
Externally, the private south-facing garden is a real highlight, boasting a sunny patio area and mature hedging that provides both charm and privacy. With convenient on-street parking and a highly sought-after location close to local amenities, this is a home that effortlessly combines style, practicality, and

location appeal.

Additional Images



Aerial View Of Garden



Hallway



Hallway



Bathroom



Reception Room



Kitchen



Hallway



Landing



Bedroom 2



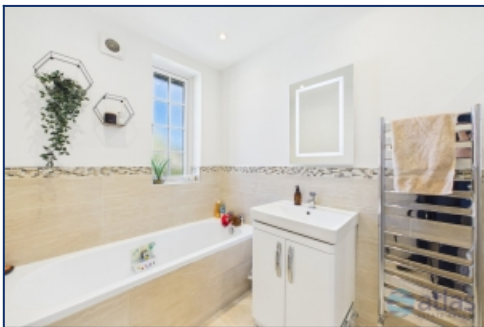
Bedroom 2



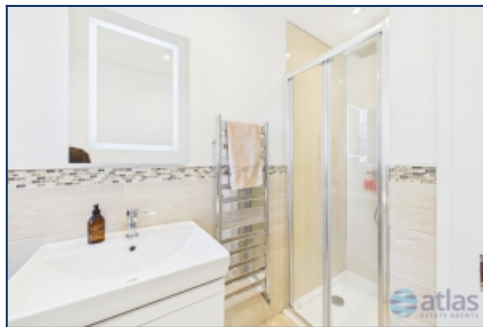
Bedroom 2



Bedroom 3



Bathroom



Bathroom



Front Elevation



Garden



Garden



Garden



Aerial View Of Plot

Floor Plans



Tel: 0151 727 2469
Fax: 0151 727 4943

Atlas Estate Agents, 2 Allerton Road,
Mossley Hill, Liverpool, L18 1LN

Email: sales@atlasestateagents.co.uk
Website: www.atlasestateagents.co.uk

These particulars are intended to give a fair and substantially correct overall description for the guidance of intending purchasers/tenants and do not constitute an offer or part of a contract. Please note that any services, heating systems or appliances have not been tested and no warranty can be given or implied as to their working order. Prospective purchasers/tenants ought to seek their own professional advice.

All descriptions, dimensions, areas, references to condition and necessary permissions for use and occupation and other details are given in good faith and are believed to be correct, but any intending purchasers/tenants should not rely on them as statements or representations of fact, but must satisfy themselves by inspection or otherwise as to the correctness of each of them.