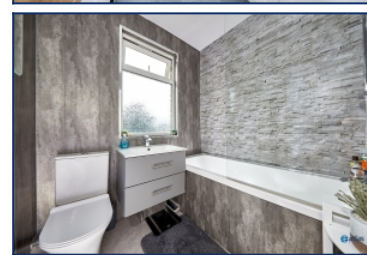


Corinthian Avenue, Old Swan, L13



For Sale - £200,000 Offers in the Region of

Key Features

- 3 Bedroom 1 Bathroom Terraced House
- EPC Rating: D
- Prime Location in the Desirable Old Swan, L13
- Two Inviting Reception Rooms, Including a Lounge with a Cosy Log Burner
- Contemporary Fitted Kitchen with Stylish Finishes
- Convenient Downstairs W.C.
- Two Generous Double Bedrooms Plus a Versatile Third Bedroom
- Modern Fitted Bathroom with Quality Fixtures
- Recently Replaced Roof and Modern Double-Glazed Windows
- Attractive Low-Maintenance Garden, Perfect for Relaxing or Entertaining
- Excellent Transport Links and Easy Access to Local Amenities
- Move-In Ready Home with Plenty of Character

Further Details

- Tenure: Freehold
- No. of Floors: 2
- Floor Space: 881 square feet / 82 square metres
- Council Tax Band: A
- Local Authority: Liverpool City Council
- Parking: On Street
- Outside Space: Back Garden
- Appliances/White Goods: Electric Cooker, Gas Hob, Fridge/Freezer

Description

Brought to the market by Atlas Estate Agents, this charming terraced house on Corinthian Avenue, Old Swan, L13, offers a perfect blend of character and contemporary living.

Arranged over two floors, the accommodation welcomes you with two inviting reception rooms, including a cosy lounge featuring a log burner, ideal for relaxing evenings or entertaining guests. The contemporary fitted kitchen is finished to a high standard, complemented by a convenient downstairs W.C. for family life or visitors.

Upstairs, the property boasts two generous double bedrooms and a versatile third bedroom, alongside a modern bathroom with quality fixtures, catering to all your needs. Recent improvements, including a replaced roof and modern double-glazed windows, provide peace of mind and enhance the home's appeal.

Externally, the attractive low-maintenance garden is perfect for alfresco dining, relaxing, or entertaining in style. Situated in a prime location within the desirable Old Swan area, the property benefits from excellent transport links and easy access to local amenities.

Ready to move in, full of character, and offering a practical yet stylish layout, this home represents a fantastic opportunity for families, professionals, or first-time buyers alike.

Additional Images



Garden



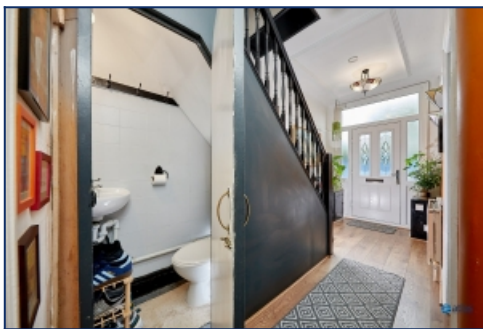
Hallway



Lounge



Dining Room



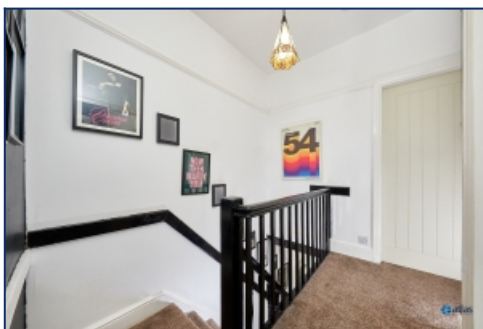
W.c



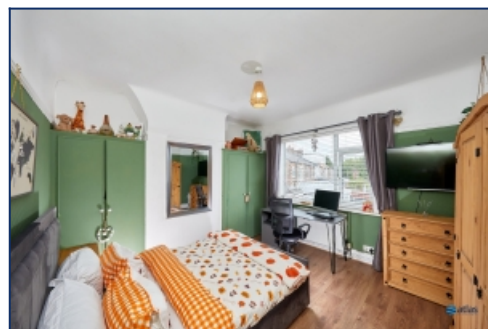
Kitchen



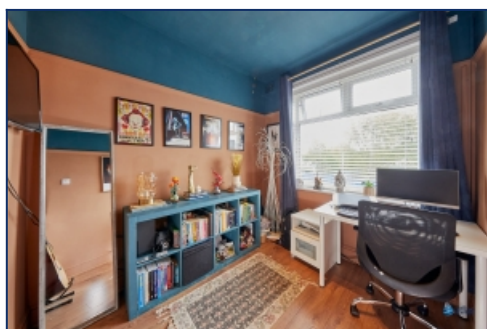
Kitchen



Landing



Bedroom



Bedroom



Garden

Floor Plans

