

Shipton Close, Allerton, L19



For Sale - £290,000 Offers in the Region of

Key Features

- 3 Bedroom 2 Bathroom Terraced House
- EPC Rating: B
- Spacious Contemporary Kitchen/Diner with Integrated Appliances and Ample Space for Family Dining
- Bright and Generously Proportioned Reception Room Featuring an Attractive Fireplace
- Convenient Ground Floor W.C.
- Three Well-Proportioned Double Bedrooms, Including a Principal Bedroom with En-Suite Bathroom
- Additional Family Bathroom
- Well-Maintained Front and Rear Gardens
- Allocated Off-Road Parking
- Recently Fitted Boiler
- Situated in the Highly Sought-After Residential Area of Allerton, L19
- Offered with No Onward Chain

Further Details

- Tenure: Freehold
- No. of Floors: 2
- Council Tax Band: C
- Local Authority: Liverpool City Council
- Parking: Allocated
- Outside Space: Front Garden, Back Garden
- Appliances/White Goods: Oven (Electric), Hob (Gas)

Description

Atlas Estate Agents are delighted to bring to the market this attractive three-bedroom terraced home, nestled within the highly sought-after residential enclave of Shipton Close, Allerton, L19. Offered with the significant advantage of no onward chain, this beautifully presented property provides spacious and versatile accommodation arranged over two floors, making it an ideal choice for families, professionals, or those seeking a well-connected and desirable location.

Upon entering, you are welcomed by a bright and generously proportioned reception room, where an attractive fireplace creates a warm and inviting focal point, perfect for both relaxing evenings and entertaining guests. To the rear, a contemporary kitchen/diner serves as the heart of the home, thoughtfully designed with integrated appliances, ample storage, and plenty of space for family dining and social gatherings. A convenient ground floor W.C. adds further practicality to the layout.

The first floor hosts three well-proportioned double bedrooms, each offering comfortable and flexible living space. The principal bedroom benefits from its own en-suite bathroom, while a stylish family bathroom serves the remaining bedrooms. With three bathrooms in total, the home is perfectly equipped to

meet the demands of modern family life.

Externally, the property enjoys well-maintained front and rear gardens, providing pleasant outdoor spaces for relaxation, play, or al fresco dining. Allocated off-road parking ensures convenience, while a recently fitted boiler offers peace of mind and improved energy efficiency.

Combining generous accommodation, modern comforts, and an enviable Allerton location, this superb home presents a fantastic opportunity for buyers seeking a move-in-ready property with no onward chain.

Additional Images



Kitchen



Downstairs Wc



Reception Room



Reception Room



Landing



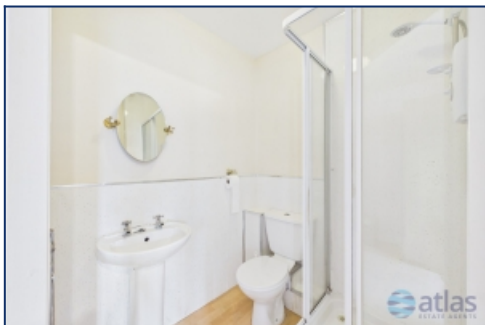
Bedroom One



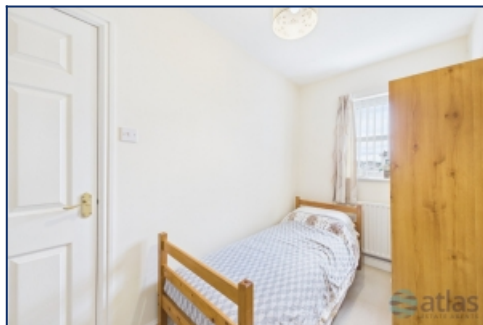
Bedroom One



Bedroom One



En-suite



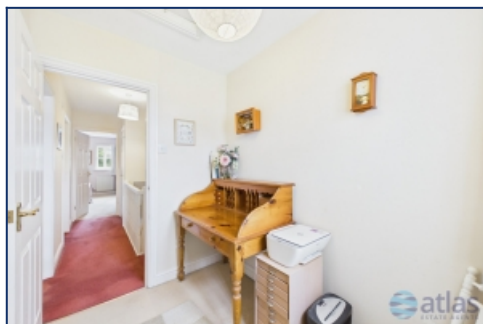
Bedroom Two



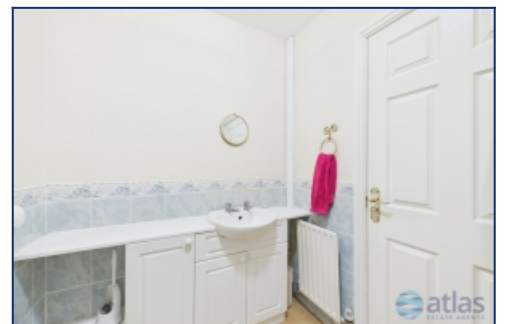
Bedroom Two



Bedroom Three



Bedroom Three



Bathroom



Bathroom



Garden



Garden



Garden



Garden



Aerial View Of Plot

Floor Plans



Tel: 0151 727 2469
 Fax: 0151 727 4943

Atlas Estate Agents, 2 Allerton Road,
 Mossley Hill, Liverpool, L18 1LN

Email: sales@atlasestateagents.co.uk
 Website: www.atlasestateagents.co.uk

These particulars are intended to give a fair and substantially correct overall description for the guidance of intending purchasers/tenants and do not constitute an offer or part of a contract. Please note that any services, heating systems or appliances have not been tested and no warranty can be given or implied as to their working order. Prospective purchasers/tenants ought to seek their own professional advice.

All descriptions, dimensions, areas, references to condition and necessary permissions for use and occupation and other details are given in good faith and are believed to be correct, but any intending purchasers/tenants should not rely on them as statements or representations of fact, but must satisfy themselves by inspection or otherwise as to the correctness of each of them.