

Torcross Way, Halewood, L26



For Sale - £290,000 Offers Over

Key Features

- 4 Bedroom 1 Bathroom Semi-Detached House
- EPC Rating: C
- A Very Well-Presented Four-Bedroom, One Bathroom Semi-Detached Home, Complete with a Driveway Providing Off-Road Parking
- A Bright and Welcoming Hallway Leading Through the Property
- To the Left, a Spacious and Private Living Room, Ideal for Relaxing Away from the Main Living Areas
- To the Right, a Modern Open-Plan Main Living and Dining Space, Both Practical and Stylish, with Bifold Doors Opening Onto and Overlooking the Garden
- Just Off the Dining Area Is a Long, Well-Designed and Functional Kitchen, Offering Ample Workspace and Storage
- Upstairs Features a Spacious, Light-Filled Landing with Access to a Boarded Loft Via a Pull-Down Ladder
- Four Generous Double Bedrooms, with Fitted Wardrobes to the Principal Bedroom
- A Modern Family Bathroom Finished to a Good Standard
- The Garden Is Exceptionally Large, Featuring Both Patio and Lawn Areas as Well as Useful Shed Space
- The Property Also Benefits from a Recently Installed Boiler and New Windows

Further Details

- Tenure: Freehold
- No. of Floors: 2
- Floor Space: 103 square metres / 1,113 square feet
- Council Tax Band: C
- Local Authority: Knowsley Metropolitan Borough Council
- Parking: Driveway
- No. of Parking Spaces: 2
- Outside Space: Front Garden, Back Garden
- Heating/Energy: Gas Central Heating, Double Glazing
- Appliances/White Goods: Gas Oven

Description

Brought to the market by Atlas Estate Agents, this beautifully presented semi-detached home is located on Torcross Way in L26. Arranged over two floors, the property combines spacious, versatile living with modern comforts, making it an ideal family home.

Set back from the road with a driveway providing off-road parking, the home welcomes you with a bright and inviting hallway. To the left, a private and generously sized living room offers a peaceful retreat, while to the right, a contemporary open-plan living and dining area provides a stylish and practical

space for family life, opening onto the garden through patio doors. The well-designed kitchen, located off the dining area, offers an extended layout with ample workspace and storage.

Upstairs, a light-filled landing leads to four generous double bedrooms, including a principal with fitted wardrobes, and a modern family bathroom. Access to a boarded loft via a pull-down ladder provides additional storage space.

Externally, the property boasts a substantial garden with both patio and lawn areas, complemented by practical shed space. Recent improvements include a new boiler and windows, ensuring comfort and efficiency throughout. This is a superb opportunity to acquire a modern and versatile home in a sought-after location.

Additional Images



Bathroom



Garden



Hallway



First Living Space



Second Living Space



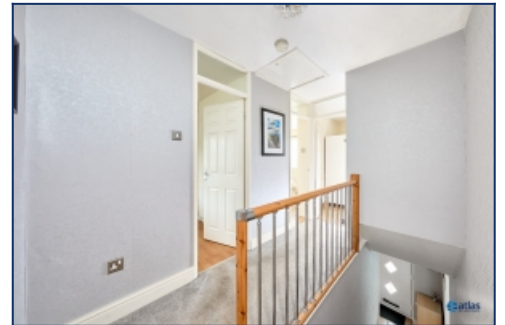
Second Living Space



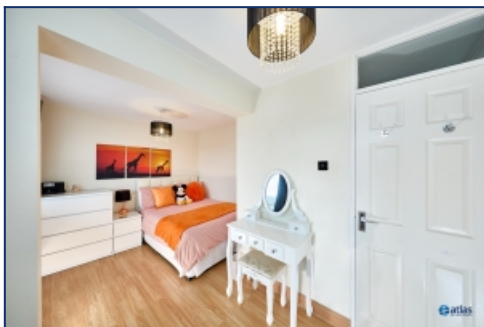
Second Living Space



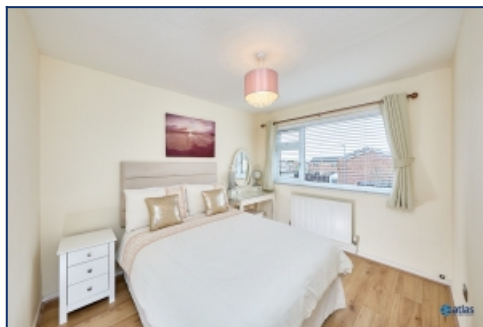
Kitchen



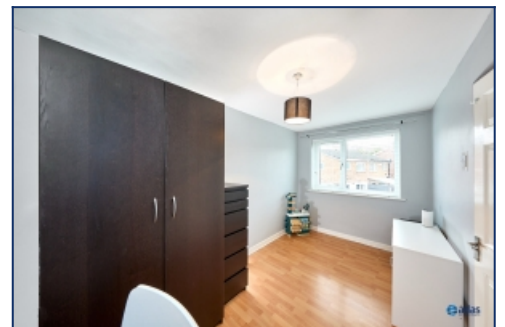
Landing



Bedroom One



Bedroom Three



Bedroom Four



Floor Plans



Tel: 0151 727 2469
Fax: 0151 727 4943

Atlas Estate Agents, 2 Allerton Road,
Mossley Hill, Liverpool, L18 1LN

Email: sales@atlasestateagents.co.uk
Website: www.atlasestateagents.co.uk

These particulars are intended to give a fair and substantially correct overall description for the guidance of intending purchasers/tenants and do not constitute an offer or part of a contract. Please note that any services, heating systems or appliances have not been tested and no warranty can be given or implied as to their working order. Prospective purchasers/tenants ought to seek their own professional advice.

All descriptions, dimensions, areas, references to condition and necessary permissions for use and occupation and other details are given in good faith and are believed to be correct, but any intending purchasers/tenants should not rely on them as statements or representations of fact, but must satisfy themselves by inspection or otherwise as to the correctness of each of them.