

## Birchen Road, Halewood, L26



## For Sale - £260,000 Offers Over

### Key Features

- 4 Bedroom 1 Bathroom Terraced House
- EPC Rating: Pending
- Charming Family Home in L26
- Open-Plan Dining Area and Kitchen
- Contemporary Fitted Kitchen with Integrated Appliances
- Three Double Bedrooms and a Flexible Fourth Bedroom
- Stylish, Recently Refurbished Bathroom
- Well-Maintained Garden
- Summer House / Bar with Electric Supply
- Generous Driveway Providing Ample Parking
- Convenient Walking Distance to Halewood Station
- Close to Local Green Spaces and Finch Woods

### Further Details

- Tenure: Freehold
- No. of Floors: 2
- Floor Space: 1,344 square feet / 125 square metres
- Council Tax Band: A
- Local Authority: Knowsley Metropolitan Borough Council
- Security: CCTV
- Parking: Driveway
- Outside Space: Back Garden
- Heating/Energy: Gas Central Heating, Double Glazing
- Appliances/White Goods: Fridge/Freezer, Washing Machine, Dishwasher

### Description

Charming Family Home on Birchen Road, Halewood, L26 - For Sale with Atlas Estate Agents

Nestled in the heart of Halewood, this delightful terraced house offers a perfect blend of character and contemporary living, ideal for growing families. Arranged over two floors, the accommodation effortlessly combines style and practicality.

Step inside to discover a welcoming hallway leading to two generously proportioned reception rooms, offering versatile space for relaxing or entertaining. The open-plan dining area flows seamlessly into a contemporary fitted kitchen, complete with integrated appliances, creating the ideal hub for family life and social gatherings.

Upstairs, there are three double bedrooms and a flexible fourth bedroom, accommodating the needs of a modern household. The stylish, recently refurbished bathroom adds a touch of elegance to the first-floor layout.

Outside, the property continues to impress. A well-maintained garden provides a peaceful retreat, complemented by a summer house/bar with electric supply - perfect for hosting friends or enjoying quiet evenings. A generous driveway ensures ample parking for multiple vehicles.

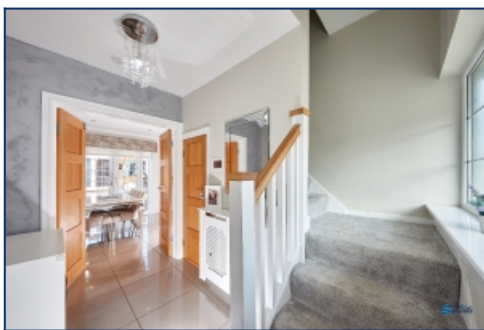
Positioned within convenient walking distance of Halewood Station and close to local green spaces, including the picturesque Finch Woods, this home offers both connectivity and tranquility.

This charming family home on Birchen Road is a rare find in L26, combining comfort, style, and an enviable location – a property not to be missed.

## Additional Images



Garden Summer House



Hallway



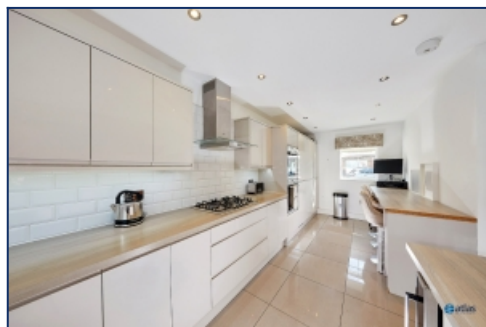
Lounge



Dining Room/Kitchen



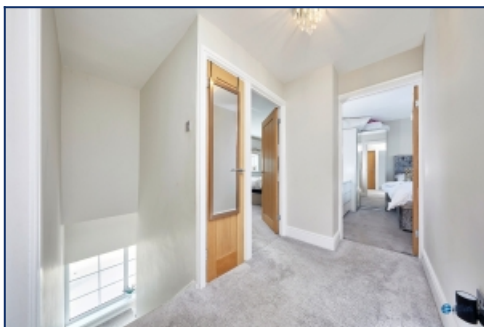
Dining Room/Kitchen



Kitchen



Kitchen



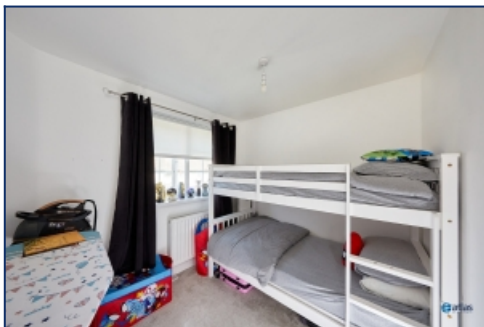
Landing



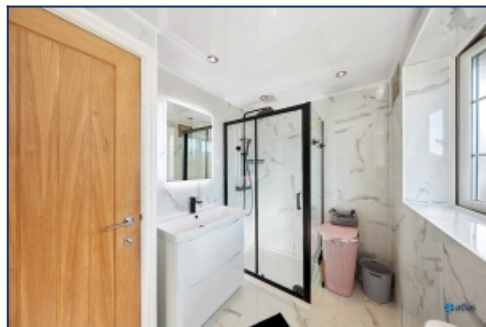
Bedroom



Bedroom



Bedroom



Bathroom



Garden

## Floor Plans



