

Lynnbank Road, Mossley Hill, L18



For Sale - £525,000 Offers in the Region of

Key Features

- 4 Bedroom 2 Bathroom Semi-Detached House
- EPC Rating: D
- No Onward Chain for a Smooth Purchase
- Grand and Inviting Hallway
- Two Spacious Reception Rooms
- Elegant Dining Room, Perfect for Entertaining
- Convenient Downstairs Bathroom
- Stylish and Contemporary Kitchen
- Four Generously Sized Double Bedrooms
- Family Bathroom with Separate W.c. for Added Convenience
- Beautifully Maintained Garden
- Stunning Family Home in Sought-after L18 Location

Further Details

- Tenure: Freehold
- No. of Floors: 2
- Floor Space: 1,471 square feet / 137 square metres
- Council Tax Band: E
- Local Authority: Liverpool City Council
- Parking: Driveway
- Outside Space: Front Garden, Back Garden
- Appliances/White Goods: Electric Cooker, Gas Hob

Description

A Stunning Family Home in the Heart of Mossley Hill

Atlas Estate Agents are delighted to present this exceptional four-bedroom semi-detached home on the highly sought-after Lynnbank Road, Mossley Hill, L18. Offering a perfect blend of elegance and contemporary living, this property provides generous accommodation across two beautifully appointed floors, with no onward chain for a smooth and stress-free purchase.

Step inside to a grand and inviting hallway, setting the tone for the space and sophistication within. The property boasts two spacious reception rooms, ideal for relaxation and entertaining, alongside an elegant dining room, perfect for hosting family gatherings and dinner parties. The stylish and contemporary kitchen provides a superb culinary space, while a convenient downstairs bathroom adds to the practicality of this impressive home.

Upstairs, you'll find four generously sized double bedrooms, offering ample space for family living. A family bathroom with a separate W.C. ensures convenience for busy households.

Externally, the property features a beautifully maintained garden, offering a tranquil retreat for outdoor enjoyment. With its prime location in Mossley Hill, close to excellent schools, transport links, and vibrant local amenities, this stunning home presents an outstanding opportunity for those seeking refined

suburban living.

Don't miss out on this remarkable property—contact Atlas Estate Agents today to arrange your viewing!

Additional Images



Downstairs Bathroom



Hallway



Hallway



Reception



Reception



Dining Room



Landing



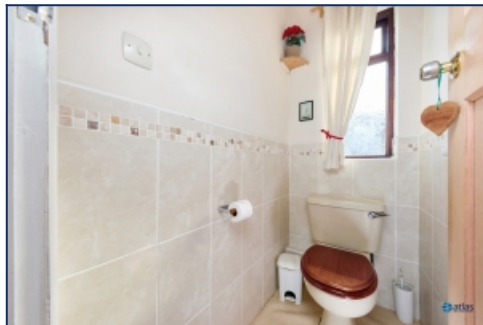
Bedroom Two



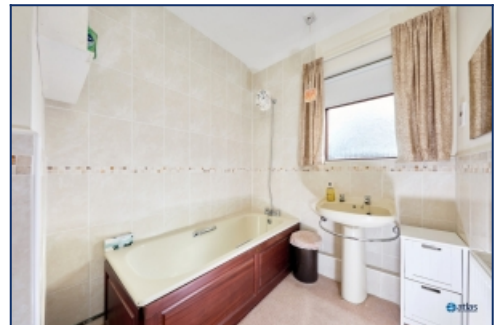
Bedroom Three



Bedroom Four



W.c



Bathroom



Garden

Floor Plans

