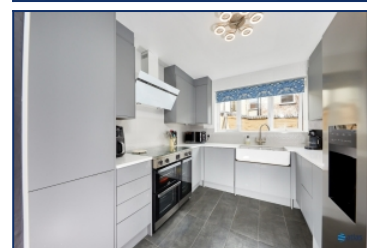
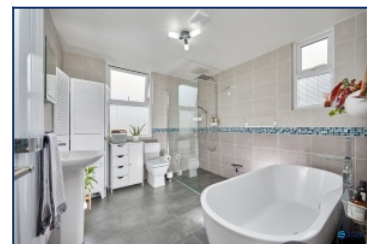


Barndale Road, Mossley Hill, L18



For Sale - £270,000 Offers Over

Key Features

- 2 Bedroom 1 Bathroom Terraced House
- EPC Rating: C
- Highly Sought-after Mossley Hill L18 Location
- Inviting Cosy Lounge Featuring a Charming Log Burner
- Stylish Open-plan Kitchen and Dining Area
- Patio Doors Seamlessly Connect the Dining Room to the Outside
- Contemporary Kitchen with Attractive Modern Fittings
- Two Generously Sized Double Bedrooms
- Spacious, Modern Bathroom Complete with a Slipper Bath and Separate Shower
- Easy-to-maintain, Appealing Rear Yard
- Double Glazed Windows and Efficient Gas Central Heating
- Elegant Shutters Adorning the Windows

Further Details

- Tenure: Freehold
- No. of Floors: 2
- Floor Space: 811 square feet / 75 square metres
- Council Tax Band: B
- Local Authority: Liverpool City Council
- Parking: On Street
- Outside Space: Back Yard
- Heating/Energy: Gas Central Heating, Double Glazing
- Appliances/White Goods: Washing Machine, Dishwasher

Description

Brought to the market by Atlas Estate Agents, this delightful terraced house on Barndale Road offers a perfect blend of traditional charm and contemporary style in the highly sought-after Mossley Hill, L18.

Set over two floors, the accommodation invites you in with a cosy lounge warmed by a charming log burner—ideal for those quiet evenings at home. The stylish open-plan kitchen and dining area provide a bright and welcoming space, where patio doors effortlessly connect the dining room to the easy-to-maintain rear yard, creating a lovely flow for indoor-outdoor living.

The contemporary kitchen boasts attractive modern fittings, making it both practical and inviting. Upstairs, two generously sized double bedrooms offer ample space and comfort, complemented by an elegant, spacious bathroom featuring a classic slipper bath alongside a separate shower for added luxury.

Additional benefits include double-glazed windows framed with elegant shutters, and efficient gas central heating throughout, ensuring warmth and style year-round. This charming home is perfectly positioned in Mossley Hill, combining comfort and convenience in one of Liverpool's most desirable neighbourhoods.

A wonderful opportunity to secure a beautifully presented property in L18 — ready to move into and enjoy from day one.

Additional Images



Yard



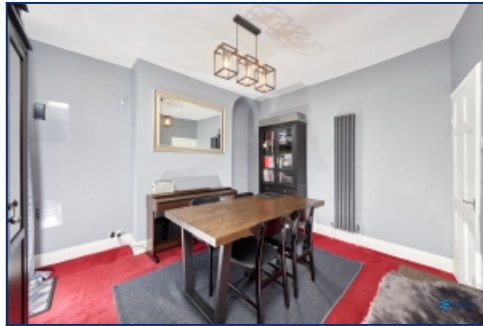
Hallway



Hallway



Lounge



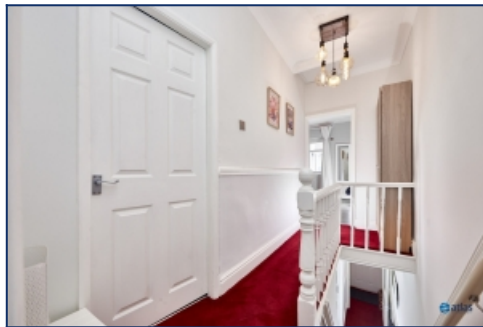
Dining Room



Dining Room



Kitchen



Landing



Bedroom



Bedroom



Yard

Floor Plans

