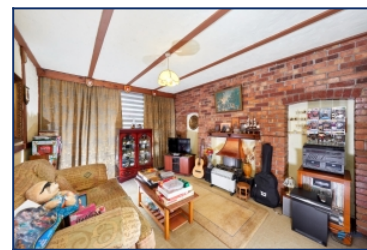
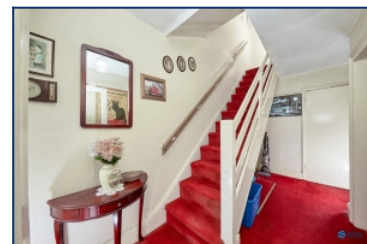


Gainsborough Road, Wavertree, L15



For Sale - £150,000 Offers in Excess of

Key Features

- 3 Bedroom 1 Bathroom Terraced House
- EPC Rating: C
- Sought-after Location in Wavertree, L15
- Fantastic Potential for Personalisation
- Lounge Featuring a Charming Bay Window
- Reception Room with Exposed Brick Feature Wall
- Well-proportioned Kitchen with Scope to Modernise
- Two Generous Double Bedrooms Plus a Versatile Third Bedroom
- Family Bathroom with Bath and Overhead Shower
- Spacious Yard Ideal for Outdoor Seating or Storage
- Excellent Public Transport Connections Nearby
- Close to Local Green Spaces and Just 10 Minutes' Walk to the Mystery Park

Further Details

- Tenure: Freehold
- No. of Floors: 2
- Floor Space: 924 square feet / 86 square metres
- Council Tax Band: A
- Local Authority: Liverpool City Council
- Parking: On Street
- Outside Space: Back Yard
- Heating/Energy: Gas Central Heating, Double Glazing
- Appliances/White Goods: Gas Hob, Gas Oven

Description

Brought to the market by Atlas Estate Agents, this well-positioned three-bedroom terraced home on Gainsborough Road, Wavertree, L15 offers a fantastic opportunity to put your own stamp on a property brimming with charm and possibility.

Arranged over two floors, the accommodation boasts two inviting reception rooms, including a front lounge bathed in natural light through a beautiful bay window, and a second reception room that features an exposed brick wall—adding warmth and character to the space.

The kitchen is well-proportioned, offering plenty of room to reimagine and modernise to suit your tastes. Upstairs, you'll find two generously sized double bedrooms along with a versatile third bedroom, ideal as a nursery, home office, or guest room. The family bathroom includes a bath with overhead shower and completes the first-floor layout.

To the rear, a yard provides an ideal spot for outdoor seating, container gardening, or additional storage.

Set within a sought-after pocket of Wavertree, this home enjoys excellent public transport links and is within easy reach of local shops, schools, and green spaces—including the much-loved Mystery Park, just a 10-minute stroll away.

Offering both charm and the potential for personalisation, this property is perfect for buyers looking to create a truly special home in a well-connected, vibrant community.

Additional Images



Bedroom 1



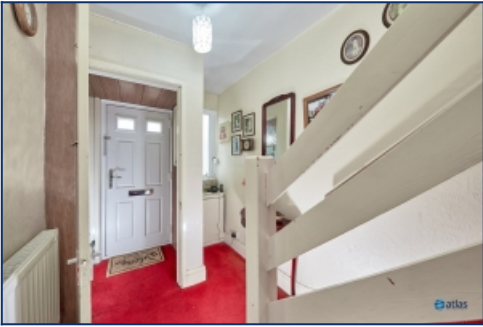
Bedroom 2



Kitchen



Kitchen



Entrance Hallway



Landing



Bedroom 3



Bathroom



Rear Yard



Rear Yard

Floor Plans

