

Vulcan Close, Garston, L19



For Sale - £220,000 Offers in the Region of

Key Features

- 3 Bedroom 1 Bathroom Semi-Detached House
- EPC Rating: C
- No Onward Chain
- Situated in the Highly Sought-After Area of L19
- Convenient Downstairs W.C.
- Open-Plan Kitchen and Dining Area
- Two Double Bedrooms Plus a Versatile Third Bedroom
- En-Suite Bathroom to the Master Bedroom
- Spacious Garden with Patio Area, Ideal for Outdoor Living
- Driveway Providing Off-Road Parking for Two Cars
- Double Glazing and Gas Central Heating Throughout

Further Details

- Tenure: Freehold
- No. of Floors: 2
- Floor Space: 811 square feet / 75 square metres
- Council Tax Band: B
- Local Authority: Liverpool City Council
- Heating/Energy: Gas Central Heating, Double Glazing
- Appliances/White Goods: Electric Cooker, Gas Hob

Description

Nestled in the highly sought-after L19 postcode, this delightful semi-detached home on Vulcan Close is proudly brought to the market by Atlas Estate Agents and is offered for sale with no onward chain.

Thoughtfully designed for modern living, the accommodation is arranged over two floors and offers a welcoming reception room, a stylish open-plan kitchen and dining area, and the convenience of a downstairs W.C. Upstairs, you will find two generous double bedrooms – the master boasting its own en-suite – along with a versatile third bedroom, perfect for a home office, nursery, or guest room, plus a well-appointed family bathroom.

Outside, the property enjoys a spacious garden with a patio area, ideal for relaxing or entertaining during the warmer months. To the front, a driveway provides off-road parking for two vehicles. Additional benefits include double glazing, gas central heating, and a location that offers excellent access to local amenities, schools, and transport links.

This is a fantastic opportunity to secure a beautifully presented home in a desirable area – ready for you to move straight in.

Additional Images



Lounge



Hallway



Dining Area



Kitchen



Kitchen



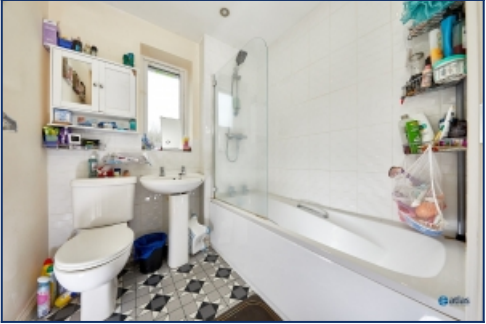
Landing



Bedroom



Bedroom



Bathroom



Garden



Garden

Floor Plans



Tel: 0151 727 2469
Fax: 0151 727 4943

Atlas Estate Agents, 2 Allerton Road,
Mossley Hill, Liverpool, L18 1LN

Email: sales@atlasestateagents.co.uk
Website: www.atlasestateagents.co.uk

These particulars are intended to give a fair and substantially correct overall description for the guidance of intending purchasers/tenants and do not constitute an offer or part of a contract. Please note that any services, heating systems or appliances have not been tested and no warranty can be given or implied as to their working order. Prospective purchasers/tenants ought to seek their own professional advice.

All descriptions, dimensions, areas, references to condition and necessary permissions for use and occupation and other details are given in good faith and are believed to be correct, but any intending purchasers/tenants should not rely on them as statements or representations of fact, but must satisfy themselves by inspection or otherwise as to the correctness of each of them.