

Anstey Road, Stoneycroft, L13



For Sale - £235,000 Offers Over

Key Features

- 3 Bedroom 1 Bathroom Semi-Detached House
- EPC Rating: C
- Spacious Reception Room with Potential to Divide Into Two Separate Living Areas
- Additional Reception Room Ideal as a Home Office, Study or Snug
- Modern Fitted Kitchen with Integrated Appliances and Marble-Effect Worktops
- Three Generously Sized Carpeted Bedrooms
- Stylish Bathroom with Bath and Overhead Shower
- Well-Presented, Low-Maintenance Paved Rear Yard
- Offered with No Onward Chain
- Beautifully Presented and Recently Refurbished Throughout with New Carpet
- Changed the Back Yard to Garden

Further Details

- Tenure: Leasehold
- No. of Floors: 2
- Floor Space: 91 square metres / 982 square feet
- Council Tax Band: B
- Local Authority: Liverpool City Council
- Ground Rent: Peppercorn
- Parking: On Street
- Outside Space: Back Garden
- Heating/Energy: Gas Central Heating
- Appliances/White Goods: Oven (Electric), Hob (Ceramic)

Leasehold Details

- Tenure: Leasehold
- Lease Start Date: 26/02/1973 (approx)
- Original Lease Term: 999 year(s)
- Lease Expiry Date: 25/02/2972 (approx)
- Lease Term Remaining: 945 year(s) (approx)
- Service Charge: None
- Ground Rent: Peppercorn

Description

Brought to the market by Atlas Estate Agents, this beautifully presented and recently refurbished three-bedroom semi-detached home on Anstey Road, Stoneycroft, offers stylish, move-in-ready accommodation arranged over two floors and is available with no onward chain.

The property has been thoughtfully updated throughout, blending contemporary finishes with practical living spaces. At the heart of the home is a spacious reception room, offering excellent versatility with the potential to be divided into two distinct living areas to suit a variety of lifestyles. A second reception room provides the perfect setting for a home office, study or cosy snug, creating valuable additional space for modern family living or remote working.

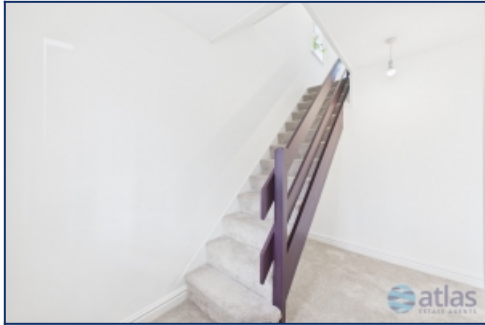
The sleek, modern fitted kitchen is both elegant and functional, featuring integrated appliances, marble-effect worktops and ample storage, making it an ideal space for everyday cooking and entertaining alike.

Upstairs, the property boasts three generously proportioned, carpeted bedrooms, each offering comfortable and inviting accommodation. Completing the first floor is a stylish family bathroom, fitted with a contemporary suite including a bath with an overhead shower.

Externally, the home benefits from a well-presented, low-maintenance paved rear yard, providing an attractive outdoor space to relax or entertain with minimal upkeep.

With its high-quality refurbishment, versatile layout and sought-after location, this impressive home presents an exceptional opportunity for first-time buyers, growing families and investors alike. Offered to the market with no onward chain, early viewing is highly recommended.

Additional Images



Hallway



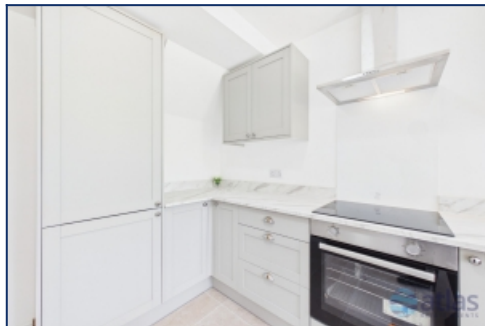
Reception Room



Reception Room



Kitchen



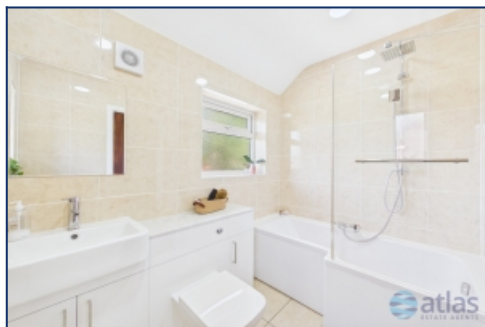
Kitchen



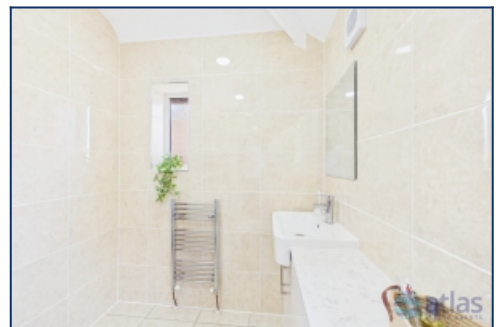
Office



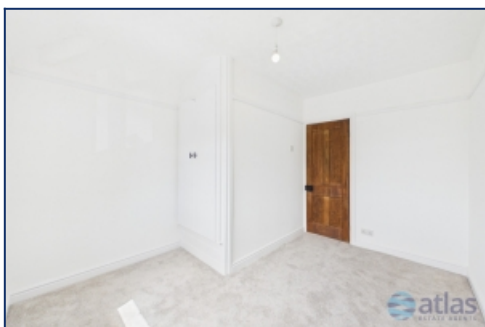
Office



Bathroom



Bathroom



Bedroom One



Bedroom One



Bedroom Two



Bedroom Two



Bedroom Three



Bedroom Three



Paved Garden



Paved Garden



Floor Plans



Tel: 0151 727 2469
Fax: 0151 727 4943

Atlas Estate Agents, 2 Allerton Road,
Mossley Hill, Liverpool, L18 1LN

Email: sales@atlasestateagents.co.uk
Website: www.atlasestateagents.co.uk

These particulars are intended to give a fair and substantially correct overall description for the guidance of intending purchasers/tenants and do not constitute an offer or part of a contract. Please note that any services, heating systems or appliances have not been tested and no warranty can be given or implied as to their working order. Prospective purchasers/tenants ought to seek their own professional advice.

All descriptions, dimensions, areas, references to condition and necessary permissions for use and occupation and other details are given in good faith and are believed to be correct, but any intending purchasers/tenants should not rely on them as statements or representations of fact, but must satisfy themselves by inspection or otherwise as to the correctness of each of them.