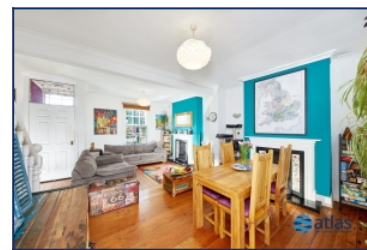
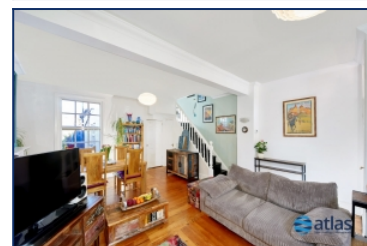


Salisbury Terrace, Wavertree, L15



For Sale - £300,000 Offers Over

Key Features

- 3 Bedroom 1 Bathroom End of Terrace House
- EPC Rating: D
- Beautifully Decorated, Stunning Period Property
- Large Well Manicured Front and Rear Gardens
- Original Character Features Retained
- Set Over Four Floors
- Loft Room for Storage
- Excellent Transport Links - Proximate to Amenities and Green Spaces
- Basement Room With Recreation and Storage Space
- Generous Kitchen/Dining Area With Patio Doors Opening to Garden
- Cast Iron Fireplaces in Lounge/Dining Area
- Contemporary Bathroom With Walk in Shower

Further Details

- Tenure: Freehold
- No. of Floors: 4
- Floor Space: 151 square metres / 1,624 square feet
- Council Tax Band: B
- Local Authority: Liverpool City Council
- Parking: On Street
- Outside Space: Front Garden, Back Garden
- Heating/Energy: Gas Central Heating, Double Glazing
- Appliances/White Goods: Electric Oven, Electric Hob (Induction)

Description

Welcome to Salisbury Terrace, an exquisite period property brought to the market by Atlas Estate Agents. This stunning end-of-terrace house is now available for sale, offering a rare opportunity to own a piece of history.

As you step through the front door, you'll be greeted by the beautifully decorated interior, which is sure to take your breath away. The property boasts three reception rooms, three bedrooms, and a contemporary bathroom with a walk-in shower, providing ample space for you and your family.

With accommodation arranged over four floors, this property offers 151 square metres of living space, providing plenty of room to spread out and relax. The loft room provides additional storage space, while the basement room offers recreation and storage space, perfect for a growing family.

The original character features have been retained, adding to the charm and character of the property. The cast iron fireplaces in the lounge and dining area provide a warm and inviting atmosphere, perfect for those cosy nights in.

The generously sized kitchen/dining area is the heart of the home, with patio doors opening onto the large, well-manicured front and rear gardens. The perfect spot for entertaining friends and family or simply relaxing in the sunshine.

As an additional bonus a Worcester Bosch Combi boiler was installed in Nov 2020 offering piece-of-mind regarding energy efficiency and reliability.

Located in L15, this stunning property benefits from excellent transport links, putting you within easy reach of local amenities and green spaces. Whether you're looking for a peaceful retreat or a vibrant city lifestyle, Salisbury Terrace has it all.

Don't miss out on this unique opportunity to own a beautiful period property in a prime location. Contact Atlas Estate Agents today to arrange a viewing.

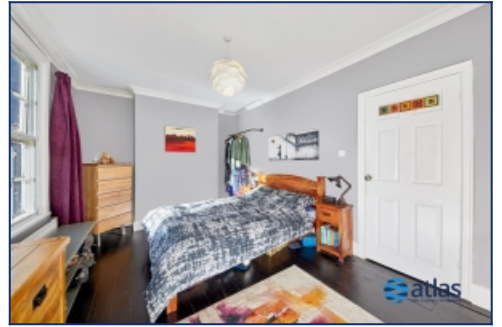
Additional Images



Bedroom



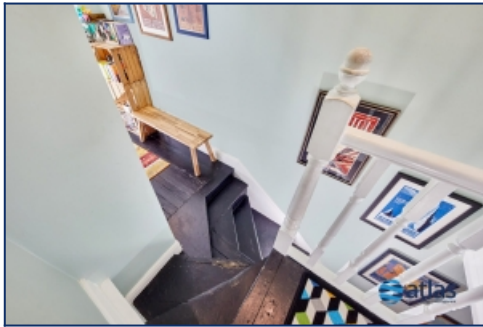
Back Garden



Bedroom



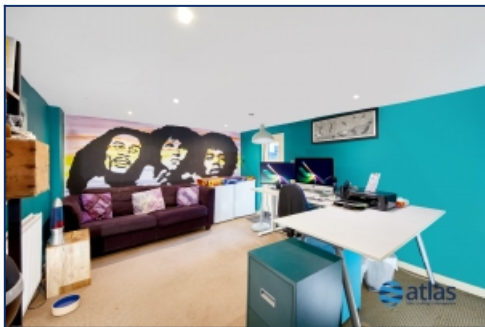
Kitchen/Dining



Stairway



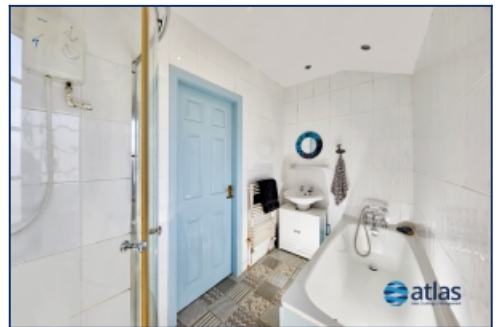
Bedroom



Study



Bedroom



Bathroom



Front



Garden



Garden

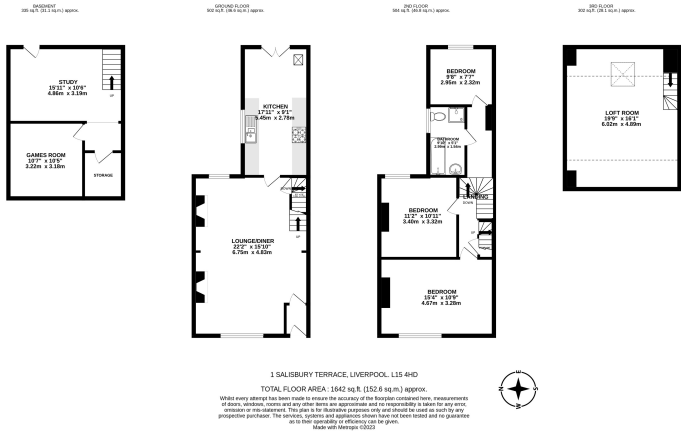


Garden/Dining Space



Back Garden

Floor Plans



Tel: 0151 727 2469
Fax: 0151 727 4943

Atlas Estate Agents, 2 Allerton Road,
Mossley Hill, Liverpool, L18 1LN

Email: sales@atlasestateagents.co.uk
Website: www.atlasestateagents.co.uk

These particulars are intended to give a fair and substantially correct overall description for the guidance of intending purchasers/tenants and do not constitute an offer or part of a contract. Please note that any services, heating systems or appliances have not been tested and no warranty can be given or implied as to their working order. Prospective purchasers/tenants ought to seek their own professional advice.

All descriptions, dimensions, areas, references to condition and necessary permissions for use and occupation and other details are given in good faith and are believed to be correct, but any intending purchasers/tenants should not rely on them as statements or representations of fact, but must satisfy themselves by inspection or otherwise as to the correctness of each of them.