

Southdale Road, Wavertree, L15



For Sale - £200,000 Offers Over

Key Features

- 3 Bedroom 1 Bathroom Terraced House
- EPC Rating: C
- Beautifully Presented Three-Bedroom, One-Bathroom Terraced House for Sale, Featuring Original Character Features and On-Street Parking
- A Spacious and Bright Entrance Hallway Welcomes You Into the Property and Provides Access to the Ground-Floor Accommodation
- The Front Dining Room Benefits from a Bay Window and Flows Seamlessly Into the Open-Plan Living Area, Both Enhanced by Stunning Feature Fireplaces
- The Kitchen Is Set Within Its Own Dedicated Space, Offering a Modern Finish and Direct Access to the Rear Garden
- The First Floor Comprises a Spacious Landing, Two Generous Double Bedrooms, a Well-Proportioned Single Bedroom, and a Modern Family Bathroom

Further Details

- Tenure: Freehold
- No. of Floors: 2
- Floor Space: 74 square metres / 801 square feet
- Council Tax Band: A
- Local Authority: Liverpool City Council
- Parking: On Street
- Outside Space: Back Yard
- Heating/Energy: Gas Central Heating, Double Glazing
- Appliances/White Goods: Oven (Electric), Hob (Gas), Dishwasher

Description

Atlas Estate Agents are delighted to bring to the market this beautifully presented three-bedroom terraced home, situated on the ever-popular Southdale Road in Wavertree, L15. Combining attractive period charm with modern comforts, this welcoming property offers spacious accommodation arranged over two floors and is ideal for families, first-time buyers and investors alike.

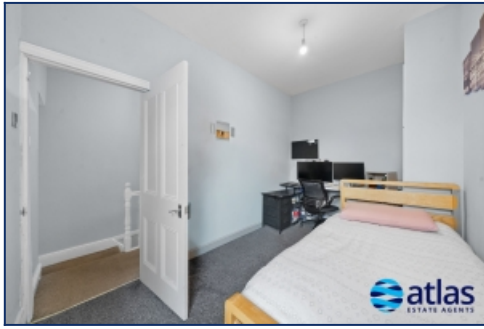
Upon entering, you are greeted by a bright and spacious entrance hallway that sets the tone for the rest of the home. To the front, the elegant dining room is bathed in natural light from a striking bay window and features a beautiful fireplace, creating a warm and inviting atmosphere. This room flows effortlessly into the open-plan living area, where a further feature fireplace provides a charming focal point, making it the perfect space for relaxing or entertaining.

The kitchen is thoughtfully positioned within its own dedicated space and has been finished to a modern standard, offering ample storage and workspace. From here, direct access leads out to the rear garden, providing an excellent outdoor setting for dining, entertaining or simply enjoying the warmer months.

The first floor is centred around a generous landing and comprises two spacious double bedrooms, a well-proportioned single bedroom and a contemporary family bathroom, all presented to an excellent standard throughout.

Retaining a wealth of original character features and benefiting from convenient on-street parking, this attractive home offers the perfect blend of traditional charm and modern living in a sought-after residential location.

Additional Images



Bedroom Two



Aerial Front Elevation Of Property (night Shot)



Aerial Front Elevation Of Property



Front Elevation Of Property (night Shot)



Entrance Hallway



Entrance Hallway



Living/Dining Space



Dining Space



Dining/Living Space



Living Space



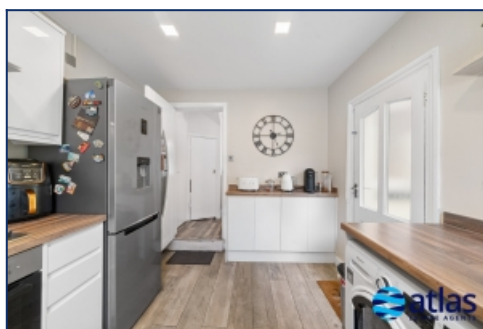
Living Space



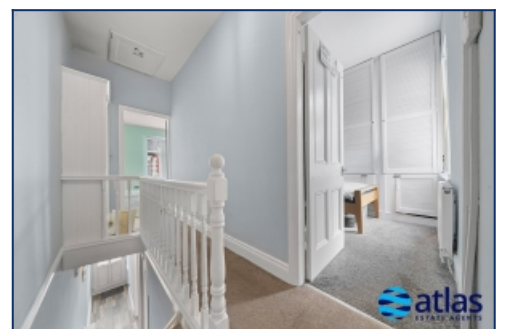
Living/Dining Space



Kitchen



Kitchen



Landing



Landing



Bedroom One



Bedroom Two



Bedroom Three



Bedroom Three



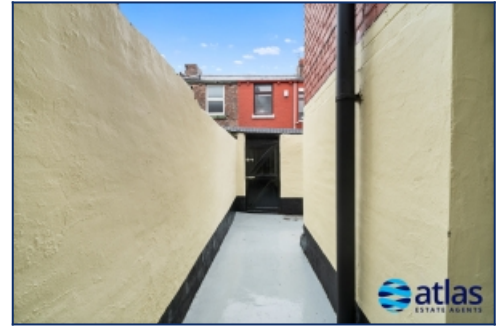
Bathroom



Aerial View



Aerial View Boundary



Outdoor Space



Rear Elevation Of Property & Outdoor Space



Rear Elevation Of Property & Outdoor Space
(night Shot)

Floor Plans



Tel: 0151 727 2469
Fax: 0151 727 4943

Atlas Estate Agents, 2 Allerton Road,
Mossley Hill, Liverpool, L18 1LN

Email: sales@atlasestateagents.co.uk
Website: www.atlasestateagents.co.uk

These particulars are intended to give a fair and substantially correct overall description for the guidance of intending purchasers/tenants and do not constitute an offer or part of a contract. Please note that any services, heating systems or appliances have not been tested and no warranty can be given or implied as to their working order. Prospective purchasers/tenants ought to seek their own professional advice.

All descriptions, dimensions, areas, references to condition and necessary permissions for use and occupation and other details are given in good faith and are believed to be correct, but any intending purchasers/tenants should not rely on them as statements or representations of fact, but must satisfy themselves by inspection or otherwise as to the correctness of each of them.