

Goldfinch Farm Road, Speke, L24



For Sale - £150,000 Offers in Excess of

Key Features

- 3 Bedroom 1 Bathroom Terraced House
- EPC Rating: D
- Offered with No Onward Chain
- Bright and Welcoming Lounge with Bay Window
- Stylish Modern Fitted Kitchen
- Useful Under-Stairs Storage
- Three Well-Proportioned Bedrooms
- Contemporary Family Bathroom
- Driveway Providing Off-Street Parking
- Private Rear Garden
- Excellent Transport Links – Just Minutes from Liverpool John Lennon Airport

Further Details

- Tenure: Freehold
- No. of Floors: 2
- Floor Space: 724 square feet / 67 square metres
- Council Tax Band: A
- Local Authority: Liverpool City Council
- Parking: Driveway
- Outside Space: Back Garden
- Heating/Energy: Gas Central Heating, Double Glazing
- Appliances/White Goods: Electric Cooker, Gas Hob

Description

Brought to the market by Atlas Estate Agents, this delightful three-bedroom terraced home on Goldfinch Farm Road, Speke (L24) offers bright and comfortable living in a convenient location, perfect for first-time buyers and families alike.

The property welcomes you with a bright and airy lounge, featuring a charming bay window that fills the room with natural light – an inviting space to relax or entertain. Beyond lies a stylish modern fitted kitchen, designed with both practicality and elegance in mind, offering ample storage and workspace for everyday cooking and dining. A useful under-stairs storage area adds further convenience.

Upstairs, there are three well-proportioned bedrooms, each thoughtfully arranged to provide comfort and flexibility, alongside a contemporary family bathroom finished with a sleek, modern touch.

Outside, the property benefits from a driveway providing off-street parking and a private rear garden, ideal for enjoying a morning coffee or summer evenings outdoors.

Situated in a popular residential area, this home enjoys excellent transport links, being just minutes from Liverpool John Lennon Airport and within easy reach of local amenities and major routes into the city.

Offered with no onward chain, this well-presented home is ready to move straight into - a fantastic opportunity not to be missed.

Additional Images



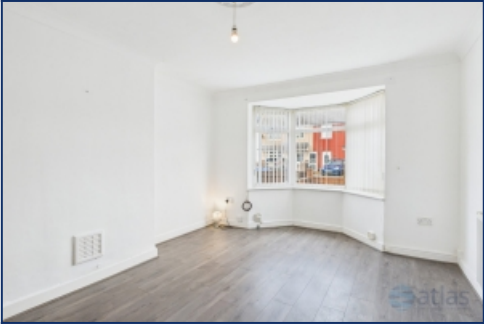
Bathroom



Hallway



Hallway



Lounge



Kitchen



Kitchen



Landing



Bedroom

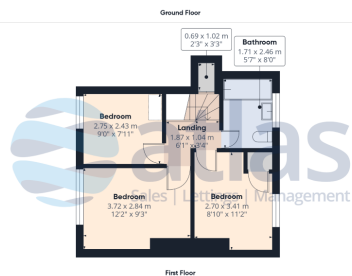


Bedroom



Bathroom

Floor Plans



These particulars are intended to give a fair and substantially correct overall description for the guidance of intending purchasers/tenants and do not constitute an offer or part of a contract. Please note that any services, heating systems or appliances have not been tested and no warranty can be given or implied as to their working order. Prospective purchasers/tenants ought to seek their own professional advice.

All descriptions, dimensions, areas, references to condition and necessary permissions for use and occupation and other details are given in good faith and are believed to be correct, but any intending purchasers/tenants should not rely on them as statements or representations of fact, but must satisfy themselves by inspection or otherwise as to the correctness of each of them.