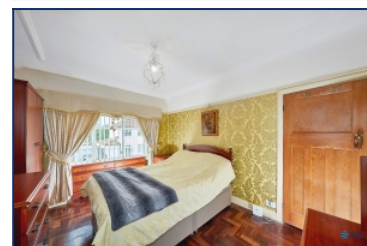
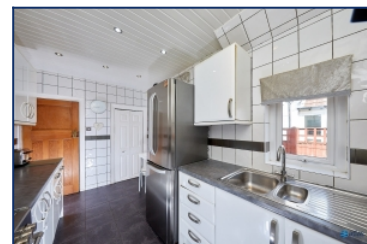


Ryegate Road, Cressington, L19



For Sale - £450,000 Offers Over

Key Features

- 4 Bedroom 2 Bathroom Semi-Detached House
- EPC Rating: D
- Highly Desirable Location in Cressington, L19
- Excellent Scope for Personalisation
- Two Generously Sized Reception Rooms
- Stylish Modern Fitted Kitchen
- Practical Utility Area
- Convenient Ground Floor W.C.
- Four Well-Proportioned Bedrooms
- Contemporary Family Bathroom
- Attached Garage with Driveway Parking
- Attractive, Well-Maintained Garden

Further Details

- Tenure: Freehold
- No. of Floors: 2
- Floor Space: 1,285 square feet / 119 square metres
- Council Tax Band: D
- Local Authority: Liverpool City Council
- Parking: Driveway
- Outside Space: Back Garden
- Heating/Energy: Gas Central Heating, Double Glazing
- Appliances/White Goods: Electric Oven, Gas Hob

Description

Brought to the market by Atlas Estate Agents, this delightful extended semi-detached house on Ryegate Road enjoys a prime position in the highly sought-after Cressington area of L19. Offering a wonderful blend of spacious accommodation and excellent scope for personalisation, this family home is perfectly suited for those looking to put their own stamp on a well-loved property in a prestigious neighbourhood.

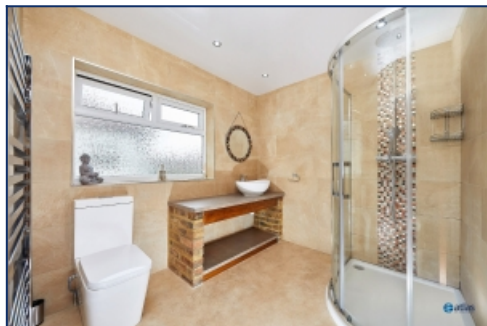
Set over two floors, the ground floor has been thoughtfully extended to create even more versatile living space. It features two generously sized reception rooms, each flooded with natural light and offering flexible areas for relaxing, entertaining, or family time. The stylish, modern fitted kitchen is designed for contemporary living and flows seamlessly into a practical utility area, providing added convenience for busy households. Completing the ground floor is a useful and conveniently located W.C., ideal for guests and family alike.

Upstairs, the property boasts four well-proportioned bedrooms, each offering comfortable space and a peaceful atmosphere. The contemporary family bathroom has been finished to a high standard, providing a calm and stylish environment to unwind.

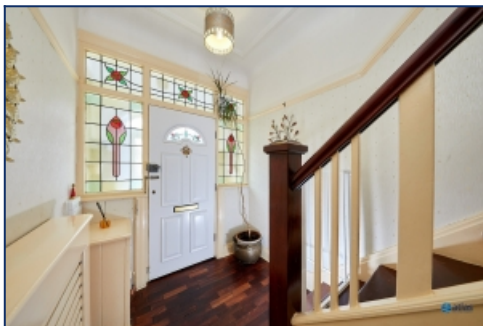
Externally, the property benefits from an attached garage and driveway parking, catering perfectly for families with vehicles. The attractive, well-maintained garden provides a private outdoor retreat, ideal for alfresco dining, play, or gardening enthusiasts looking to enjoy the outdoors.

Situated in one of Liverpool's most desirable postcodes, this extended home offers an excellent opportunity to create a truly personalised living space within the peaceful and well-established community of Cressington. With its superb location, generous accommodation, and charming features, this property is a must-see for families and professionals alike looking to settle in L19.

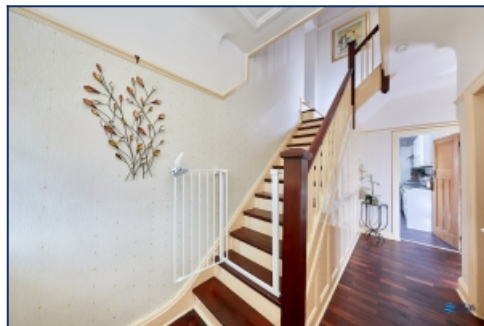
Additional Images



Bathroom



Hallway



Hallway



Lounge



Reception Room



Kitchen



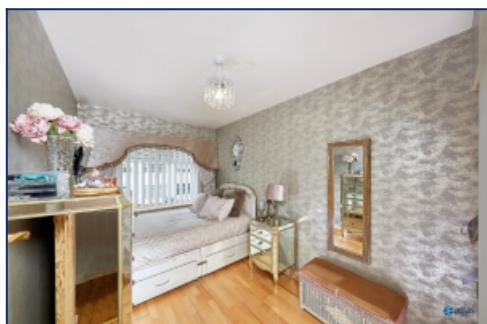
Kitchen



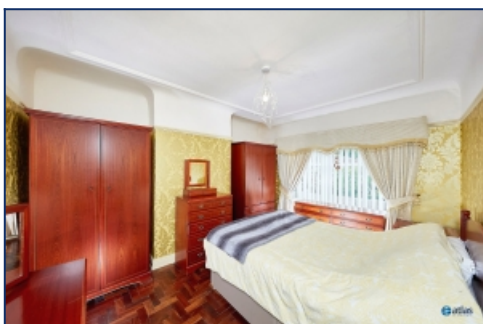
Utility Space



W.c



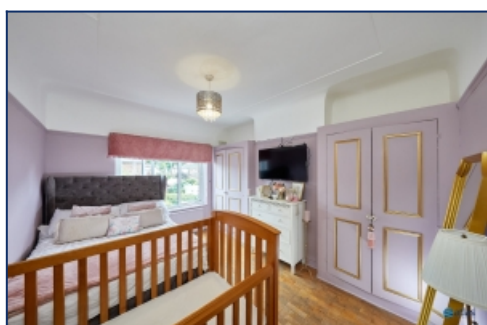
Bedroom



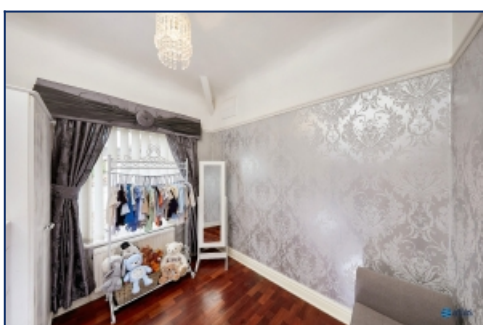
Bedroom



Bedroom



Bedroom



Bedroom



Garden



Garden



Garden



Garden

Floor Plans



Tel: 0151 727 2469
Fax: 0151 727 4943

Atlas Estate Agents, 2 Allerton Road,
Mossley Hill, Liverpool, L18 1LN

Email: sales@atlasestateagents.co.uk
Website: www.atlasestateagents.co.uk

These particulars are intended to give a fair and substantially correct overall description for the guidance of intending purchasers/tenants and do not constitute an offer or part of a contract. Please note that any services, heating systems or appliances have not been tested and no warranty can be given or implied as to their working order. Prospective purchasers/tenants ought to seek their own professional advice.

All descriptions, dimensions, areas, references to condition and necessary permissions for use and occupation and other details are given in good faith and are believed to be correct, but any intending purchasers/tenants should not rely on them as statements or representations of fact, but must satisfy themselves by inspection or otherwise as to the correctness of each of them.