

## Roskell Road, Hunts Cross, L25



**For Sale - £340,000 Offers Over**

### Key Features

- 3 Bedroom 1 Bathroom Semi-Detached House
- EPC Rating: D
- Stunning Extended Family Home Finished to an Exceptional Standard
- Bright Lounge with a Charming Bay Window
- Stylish Open-plan Living, Dining, and Kitchen Area
- Contemporary Extended Kitchen with Integrated Appliances and Central Island
- Convenient Downstairs W.c.
- Two Generously Sized Double Bedrooms with Fitted Wardrobes
- Versatile Third Bedroom, Ideal as a Home Office or Child's Room
- Elegant Modern Shower Room
- Expansive, Beautifully Maintained Rear Garden
- Highly Desirable L25 Hunts Cross Location

### Further Details

- Tenure: Freehold
- No. of Floors: 2
- Floor Space: 1,003 square feet / 93 square metres
- Council Tax Band: C
- Local Authority: Liverpool City Council
- Parking: Driveway
- Outside Space: Front Garden, Back Garden
- Heating/Energy: Gas Central Heating, Double Glazing

### Description

A Stunning Extended Family Home in the Heart of Hunts Cross

Atlas Estate Agents are delighted to present this exquisite three-bedroom semi-detached home on the sought-after Roskell Road, L25. Finished to an exceptional standard, this stunning property offers the perfect blend of contemporary design and comfortable family living.

Stepping inside, you are greeted by a bright and inviting lounge, where a charming bay window fills the space with natural light, creating a warm and relaxing atmosphere. Beyond, the home truly comes to life with a stylish open-plan living, dining, and kitchen area—the heart of the home. The contemporary extended kitchen is a true showstopper, boasting integrated appliances, sleek finishes, and a central island, perfect for both casual breakfasts and entertaining guests. A convenient downstairs W.C. adds to the home's practicality.

Upstairs, two generously sized double bedrooms offer fitted wardrobes, ensuring ample storage, while a versatile third bedroom serves as an ideal home office, nursery, or child's room. The elegant modern shower room completes the upper floor, featuring chic fixtures and a sophisticated finish.

Outside, the property continues to impress with an expansive, beautifully maintained rear garden, providing a tranquil retreat and plenty of space for outdoor enjoyment.

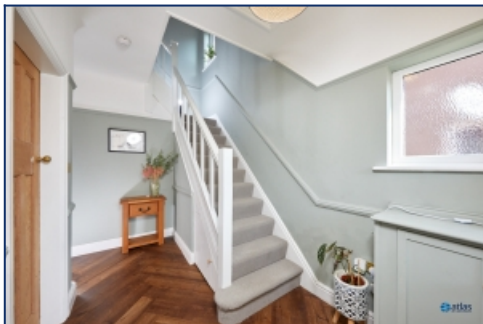
Situated in the highly desirable Hunts Cross area, this home offers excellent transport links, well-regarded schools, and a wealth of local amenities. With its exceptional finish and superb location, this is a rare opportunity not to be missed.

Enquire today to arrange your viewing!

## Additional Images



Garden



Hallway



Lounge



Open Plan Kitchen / Diner / Living Area



Open Plan Kitchen / Diner / Living Area



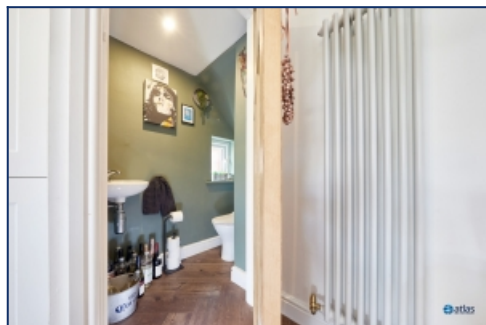
Open Plan Kitchen / Diner / Living Area



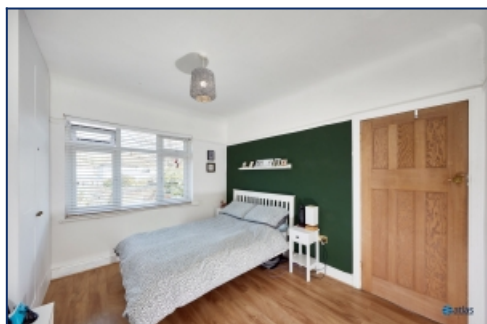
Open Plan Kitchen / Diner / Living Area



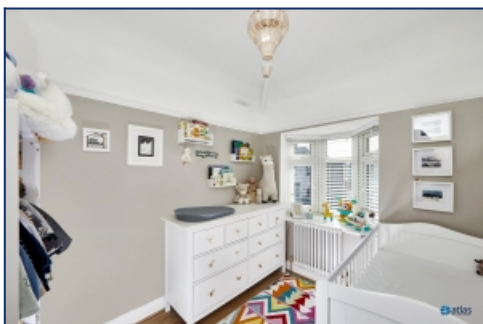
Open Plan Kitchen / Diner / Living Area



W.c



Bedroom Two



Bedroom Three



Garden

## Floor Plans





Tel: 0151 727 2469  
Fax: 0151 727 4943

Atlas Estate Agents, 2 Allerton Road,  
Mossley Hill, Liverpool, L18 1LN

Email: [sales@atlasestateagents.co.uk](mailto:sales@atlasestateagents.co.uk)  
Website: [www.atlasestateagents.co.uk](http://www.atlasestateagents.co.uk)

These particulars are intended to give a fair and substantially correct overall description for the guidance of intending purchasers/tenants and do not constitute an offer or part of a contract. Please note that any services, heating systems or appliances have not been tested and no warranty can be given or implied as to their working order. Prospective purchasers/tenants ought to seek their own professional advice.

All descriptions, dimensions, areas, references to condition and necessary permissions for use and occupation and other details are given in good faith and are believed to be correct, but any intending purchasers/tenants should not rely on them as statements or representations of fact, but must satisfy themselves by inspection or otherwise as to the correctness of each of them.