

Ridgetor Road, Woolton, L25



For Sale - £375,000 Offers in Excess of

Key Features

- 3 Bedroom 1 Bathroom Semi-Detached House
- EPC Rating: C
- Private Driveway Providing Off-Street Parking
- Spacious Kitchen with Separate Large Utility Area
- Patio Doors from the Reception Room Opening Onto the Garden
- Gas Fireplace with Stylish Surround
- Fitted Wardrobes in All Three Bedrooms
- Contemporary Shower Room
- Large Garden with Paved Entertaining Area
- Conveniently Located Near Reynolds Park
- Within Close Proximity to Woolton Village
- Short Distance to Local Primary School

Further Details

- Tenure: Freehold
- No. of Floors: 2
- Floor Space: 100 square metres / 1,076 square feet
- Council Tax Band: C
- Local Authority: Liverpool City Council
- Parking: Driveway
- Outside Space: Back Garden
- Heating/Energy: Gas Central Heating, Double Glazing
- Appliances/White Goods: Cooker (Gas), Hob (Gas), Fridge, Freezer, Washing Machine

Description

Brought to the market by Atlas Estate Agents, this charming semi-detached house on Ridgetor Road, Woolton, L25, offers a delightful blend of character, space, and modern convenience.

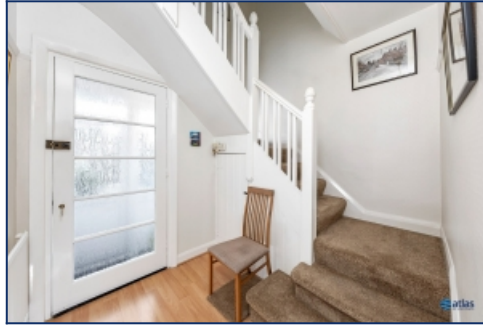
Arranged over two well-proportioned floors, the accommodation comprises a welcoming entrance leading to two versatile reception rooms, one of which boasts a cosy gas fireplace with a stylish surround and patio doors that seamlessly open onto the generous garden—perfect for summer entertaining. The spacious kitchen, complete with a separate large utility area, provides ample space for both culinary pursuits and everyday living.

Upstairs, three comfortable bedrooms await all featuring fitted wardrobes for added practicality. The contemporary shower room completes the first-floor accommodation, offering a sleek and modern space to start the day.

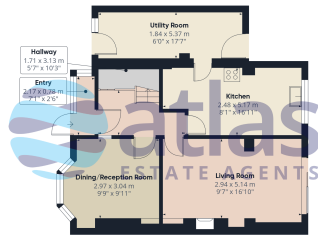
Externally, a private driveway provides off-street parking, while the large garden, with its paved entertaining area, invites relaxation and alfresco dining. Ideally positioned, the property enjoys easy access to the verdant Reynolds Park, the amenities of Woolton Village, and is just a short stroll from a local primary school—making it an excellent choice for families.

This home beautifully combines practicality with style, offering a versatile layout and a sought-after location in one of Woolton's most desirable roads.

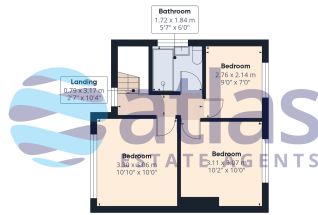
Additional Images



Floor Plans



Ground Floor



First Floor

Approximate total area*
89 m²
957 ft²

(*) Excluding balconies and terraces

Calculations reference the 2015 BS5575
BC 10 standard. Measurements are
approximate and not to scale. This
floor plan is intended for illustration
only.

GREFFESAO

Tel: 0151 727 2469
Fax: 0151 727 4943

Atlas Estate Agents, 2 Allerton Road,
Mossley Hill, Liverpool, L18 1LN

Email: sales@atlasestateagents.co.uk
Website: www.atlasestateagents.co.uk

These particulars are intended to give a fair and substantially correct overall description for the guidance of intending purchasers/tenants and do not constitute an offer or part of a contract. Please note that any services, heating systems or appliances have not been tested and no warranty can be given or implied as to their working order. Prospective purchasers/tenants ought to seek their own professional advice.

All descriptions, dimensions, areas, references to condition and necessary permissions for use and occupation and other details are given in good faith and are believed to be correct, but any intending purchasers/tenants should not rely on them as statements or representations of fact, but must satisfy themselves by inspection or otherwise as to the correctness of each of them.