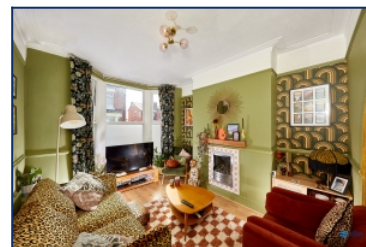


Tiverton Street, Wavertree, L15



For Sale - £150,000 Offers in Excess of

Key Features

- 2 Bedroom 1 Bathroom Terraced House
- EPC Rating: D
- Eclectic and Stylish Décor Throughout, Blending Modern and Classic Elements
- Two Generously Sized Reception Rooms Connected by a Contemporary Archway
- Modern Bathroom Featuring Bold Tiles, a Luxurious Bath, and an Overhead Shower
- Separate Entrance Hall with Distinctive Feature Floor Tiles
- Retained Period Details Throughout, Including Original Victorian Ceiling Mouldings
- Second Bedroom with Integrated Fitted Wardrobes Offering Ample Storage Space
- Boarded and Insulated Loft, Providing Additional Storage or Potential for Conversion
- Excellent Local Amenities Nearby, Including Shops, Bars, and Restaurants
- Close to Green Spaces, with the Mystery Just a 15-Minute Walk Away
- Convenient Transport Links, Including a 10-Minute Drive to the City Centre and Numerous Local Bus Routes

Further Details

- Tenure: Freehold
- No. of Floors: 2
- Floor Space: 72 square metres / 778 square feet
- Council Tax Band: A
- Local Authority: Liverpool City Council
- Parking: On Street
- Outside Space: Back Yard
- Heating/Energy: Double Glazing
- Appliances/White Goods: Fridge/Freezer

Description

Brought to the market by Atlas Estate Agents, this charming terraced home on Tiverton Street, Wavertree, L15, offers a captivating blend of classic character and contemporary style.

Beautifully presented throughout, the property showcases an eclectic and stylish décor, perfectly marrying modern finishes with timeless period details. Original Victorian ceiling mouldings and a feature tiled entrance hall set the tone for the thoughtful design that continues throughout.

The ground floor offers two generously sized reception rooms, seamlessly connected by a striking contemporary archway—ideal for entertaining or relaxing in style. The well-appointed kitchen provides a practical yet stylish space, perfect for everyday living. Wiring for an electric oven or a kitchen remodel remain in the ceiling, offering the opportunity for installation.

Upstairs, you'll find two comfortable bedrooms, including a second bedroom with integrated fitted wardrobes, offering excellent built-in storage. The modern bathroom is a standout feature, boasting bold tiling, a luxurious bath, and a sleek overhead shower.

The home also benefits from a boarded and insulated loft, ideal for additional storage or as a potential future conversion.

Perfectly positioned, Tiverton Street offers excellent local amenities, including a vibrant selection of shops, bars, and restaurants. For those who enjoy green space, The Mystery is just a 15-minute stroll away, while convenient transport links put the city centre within a 10-minute drive, with regular local bus routes also nearby.

A stylish and versatile home in a thriving location—early viewing is highly recommended.

Additional Images



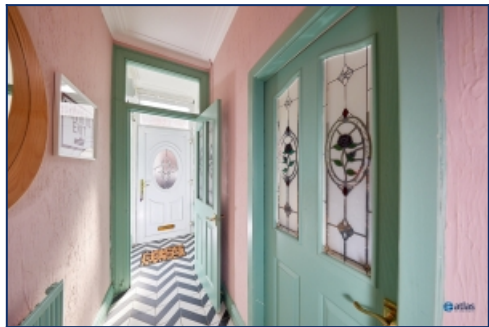
Bedroom 2



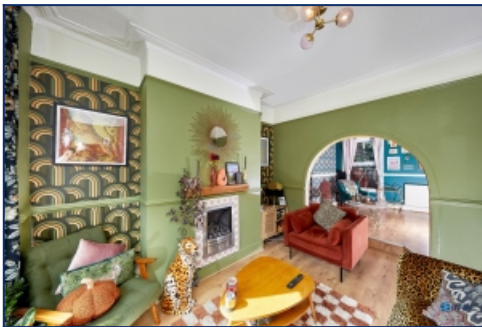
Bathroom



Entrance Hallway



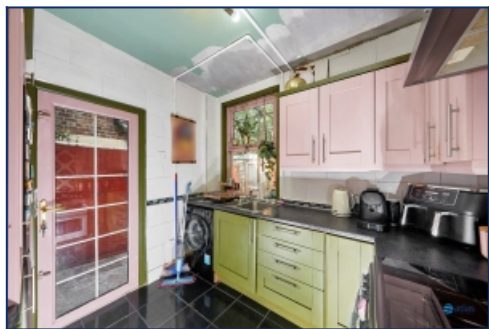
Entrance Hallway



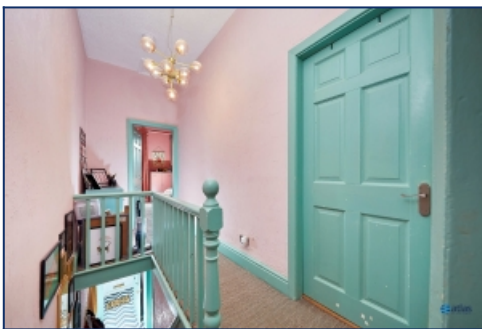
Lounge



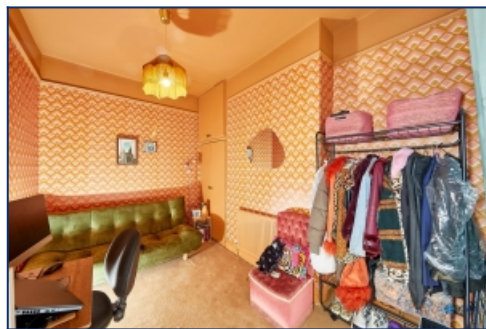
Kitchen



Kitchen



Landing



Bedroom 2



Rear Yard

Floor Plans

