

Bower Road, Woolton, L25



For Sale - £980,000

Key Features

- 3 Bedroom 2 Bathroom Bungalow
- EPC Rating: Pending
- Beautifully Presented and Exceptionally Well Maintained Throughout
- Contemporary Fitted Kitchen with Central Island, Integrated Appliances and French Doors Opening Onto the Garden
- Spacious Main Reception Room with Plush Carpeting, Feature Media Wall, Fireplace, and Floor-To-Ceiling Bay Windows Flooding the Space with Natural Light
- Additional Versatile Reception Room, Ideal as a Dining Area or Home Office
- Generous First-Floor Family Bathroom Featuring Double Vanity Sinks and a Walk-In Shower
- Impressive Principal Bedroom with a Walk-In Wardrobe/Dressing Area, Plus Two Further Well-Presented Bedrooms with Fitted Wardrobes
- Stylish and Convenient Ground-Floor Shower Room and Separate Utility Room
- Immaculately Maintained, Mature Rear Garden with a Paved Patio Seating Area and Ambient Lighting That Illuminates the Space Beautifully at Night
- Driveway Parking and a Large Electric Garage Providing Ample Storage or Secure Parking
- Situated in the Highly Sought-After L25 Area

Further Details

- Tenure: Freehold
- No. of Floors: 2
- Floor Space: 230 square metres / 2,470 square feet
- Council Tax Band: G
- Local Authority: Liverpool City Council
- Security: Burglar Alarm, CCTV
- Parking: Garage, Driveway
- No. of Parking Spaces: 3
- Outside Space: Front Garden, Back Garden
- Heating/Energy: Gas Central Heating, Double Glazing
- Appliances/White Goods: Electric Oven (Double), Electric Hob (Ceramic), Warming Drawer

Description

Brought to the market by Atlas Estate Agents, this beautifully presented bungalow on Bower Road in the ever-desirable Woolton, L25, offers an exceptional standard of living, thoughtfully arranged over two spacious floors.

From the moment you arrive, the property impresses with its sense of care and quality, a home that has been lovingly maintained and finished to a high

standard throughout. A generous driveway provides convenient off-road parking, complemented by a large garage offering excellent storage or secure vehicle accommodation.

Step inside and you are welcomed into a home that unfolds with both comfort and versatility. The main reception room is a true highlight — a warm and inviting space with plush carpeting underfoot, a striking feature media wall and fireplace, and an elegant floor-to-ceiling bay window that bathes the room in natural light. It is a space equally suited to relaxed evenings or refined entertaining.

A second reception room offers further flexibility, perfectly suited as a formal dining room, a quiet reading lounge, or a dedicated home office. In addition, a stylish ground-floor shower room and separate utility room add everyday practicality without compromising on finish or flow.

At the heart of the home lies the contemporary fitted kitchen, designed with both form and function in mind. A central island anchors the space, surrounded by integrated appliances and sleek cabinetry, while French doors open directly onto the garden, seamlessly blending indoor and outdoor living.

Upstairs, the accommodation continues to impress. The principal bedroom is a serene retreat, complete with a walk-in wardrobe and dressing area. Two further well-appointed bedrooms, each with fitted wardrobes, provide comfortable and versatile space for family or guests. The first-floor family bathroom is generously proportioned, featuring double vanity sinks and a modern walk-in shower, all finished with a stylish, contemporary touch.

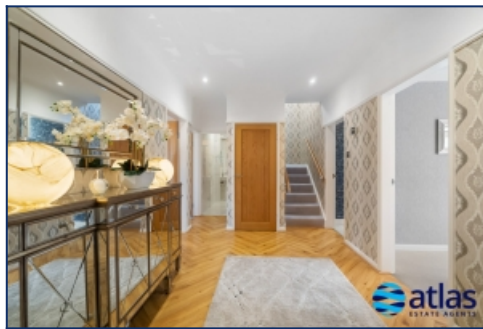
Outside, the rear garden is a particular delight — mature, immaculately maintained, and designed for both relaxation and enjoyment. A paved patio seating area provides the perfect setting for outdoor dining or quiet morning coffee, surrounded by greenery that enhances the sense of privacy and calm.

Set within the highly sought-after L25 postcode, this exceptional bungalow combines generous living space, elegant interiors, and a superb location, making it a truly outstanding home for discerning buyers.

Additional Images



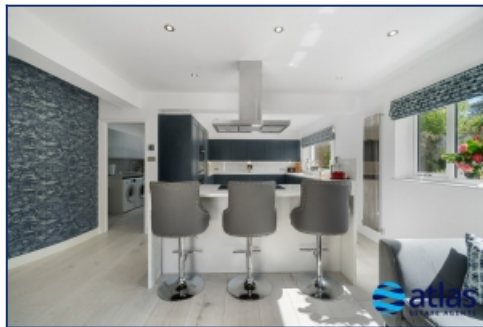
Garden



Kitchen



Kitchen



Kitchen



Reception Room 1



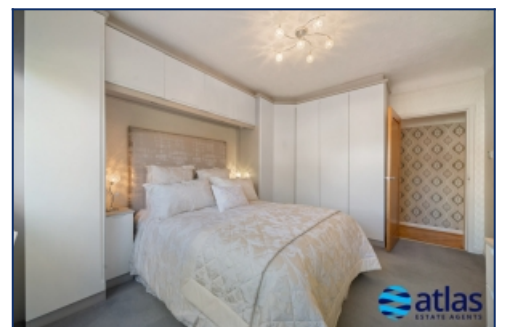
Reception Room 1



Reception Room 2



Bedroom 1



Bedroom 1



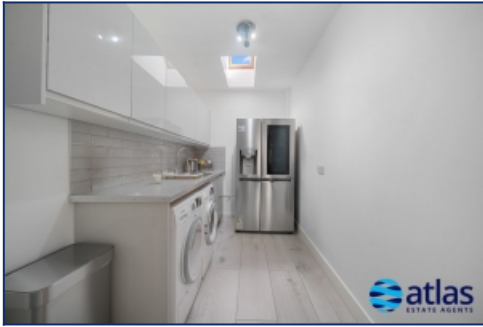
Landing



Bedroom 2



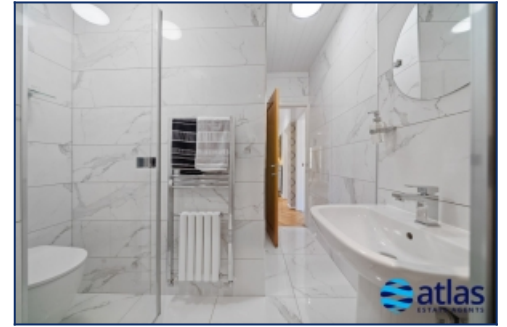
Bedroom 2



Master Bedroom



Walk-in Wardrobe (master Bedroom)



Laundry Room

Ground Floor Shower Room

Ground Floor Shower Room



Bathroom

Bathroom

Bathroom



Entrance To Property

Aerial View

Aerial View



Aerial View

Aerial View

Floor Plans



Ground Floor



First Floor

Approximate total area**

228.8m²

2479 sq ft

Reduced headroom

1.7m²

19 sq ft

(*) Excluding balconies and terraces

Reduced headroom

Below 1.5m x 1.5m

Calculations reference the 2015 NIMS

BS 8540-141 Measurements are

approximate and not to scale. This

floor plan is intended for illustration

only.

©EMFTE 2020

Tel: 0151 727 2469
Fax: 0151 727 4943

Atlas Estate Agents, 2 Allerton Road,
Mossley Hill, Liverpool, L18 1LN

Email: sales@atlasestateagents.co.uk
Website: www.atlasestateagents.co.uk

These particulars are intended to give a fair and substantially correct overall description for the guidance of intending purchasers/tenants and do not constitute an offer or part of a contract. Please note that any services, heating systems or appliances have not been tested and no warranty can be given or implied as to their working order. Prospective purchasers/tenants ought to seek their own professional advice.

All descriptions, dimensions, areas, references to condition and necessary permissions for use and occupation and other details are given in good faith and are believed to be correct, but any intending purchasers/tenants should not rely on them as statements or representations of fact, but must satisfy themselves by inspection or otherwise as to the correctness of each of them.