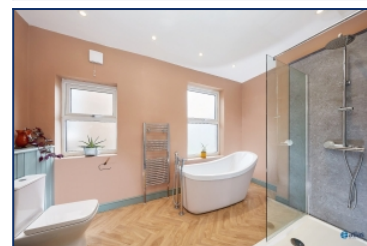


Laburnum Road, Fairfield, L7



For Sale - £200,000 Offers in the Region of

Key Features

- 4 Bedroom 2 Bathroom Semi-Detached House
- EPC Rating: D
- No Onward Chain for a Smooth Purchase Process
- Ideal Family Home in a Sought-After L7 Location
- Two Generously Sized Reception Rooms
- Contemporary Fitted Kitchen/Diner
- Convenient Utility Room
- Ground Floor Shower Room
- Two Double Bedrooms Plus Two Versatile Bedrooms
- Spacious Modern Bathroom with Slipper Bath and Separate Shower
- Low-Maintenance Rear Yard
- Close to Local Green Spaces and Just Minutes from Wavertree Botanic Gardens

Further Details

- Tenure: Freehold
- No. of Floors: 2
- Floor Space: 1,160 square feet / 108 square metres
- Council Tax Band: B
- Local Authority: Liverpool City Council
- Parking: On Street
- Outside Space: Back Yard
- Heating/Energy: Gas Central Heating, Double Glazing

Description

Tucked away on the ever-popular Laburnum Road in Fairfield, L7, this charming semi-detached home is proudly presented to the market by Atlas Estate Agents and offers the perfect blend of space, comfort, and convenience. With no onward chain, the path to making this property your own is refreshingly straightforward.

Set across two well-planned floors, the home is thoughtfully designed for family living. The ground floor welcomes you with two generously sized reception rooms, ideal for both relaxed evenings and lively gatherings, while a contemporary fitted kitchen/diner forms the heart of the home. A convenient utility room and a modern shower room complete the downstairs accommodation, ensuring practicality is never in short supply.

Upstairs, the layout includes a double bedroom alongside two versatile bedrooms, perfect for children, guests, or a home office. The highlight of the upper floor is the stylish family bathroom, featuring a luxurious slipper bath and a separate shower – a space designed for unwinding at the end of the day.

Outside, a low-maintenance rear yard provides a private spot for enjoying the sunshine without the upkeep, while the location places you just minutes from the beautiful Wavertree Botanic Gardens and other local green spaces.

An ideal family home in a sought-after area, this property offers both charm and modern convenience in equal measure.

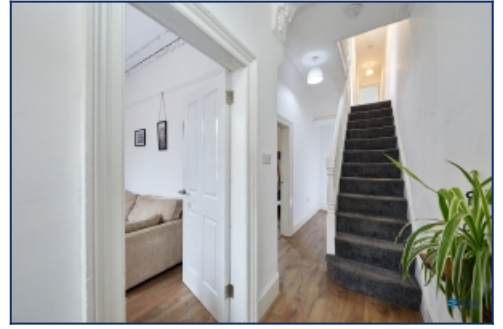
Additional Images



Utility Room



Hallway



Hallway



Lounge



Reception Room



Kitchen



Downstairs Shower Room



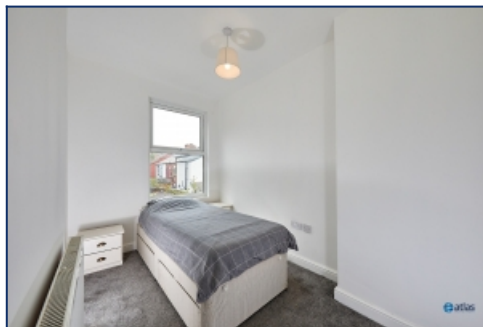
Landing



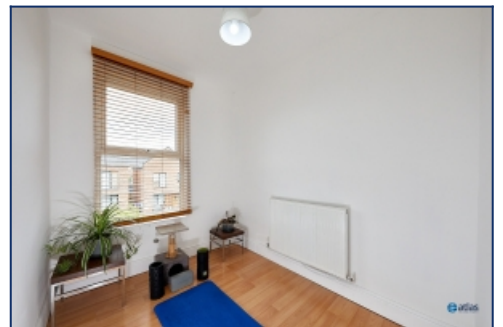
Hallway



Bedroom



Bedroom



Bedroom



Yard



Yard

Floor Plans

