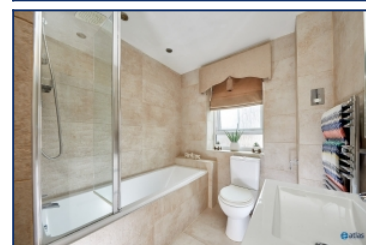
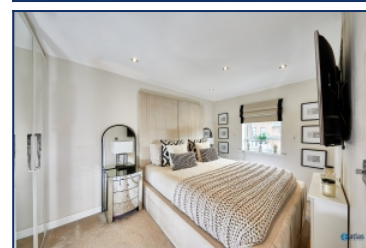


## Ramsbury Drive, Speke, L24



**For Sale - £220,000 Offers in Excess of**

### Key Features

- 3 Bedroom 1 Bathroom Semi-Detached House
- EPC Rating: C
- Beautifully Presented Semi-Detached Home
- Stylish Modern Fitted Kitchen
- Convenient Downstairs W.C.
- Bright Lounge with Feature Fireplace and French Doors to Garden
- Two Spacious Double Bedrooms and a Flexible Third Bedroom
- Contemporary Family Bathroom
- Generously Sized and Well-Maintained Rear Garden
- Private Driveway Providing Off-Road Parking
- Excellent Location Close to New Mersey Retail Park

### Further Details

- Tenure: Leasehold
- No. of Floors: 2
- Floor Space: 708 square feet / 66 square metres
- Council Tax Band: B
- Local Authority: Liverpool City Council
- Ground Rent: £250 per annum
- Parking: Driveway
- No. of Parking Spaces: 2
- Outside Space: Back Garden
- Heating/Energy: Double Glazing
- Appliances/White Goods: Gas Cooker, Electric Oven

### Leasehold Details

- Tenure: Leasehold
- Lease Start Date: 01/01/2012 (approx)
- Original Lease Term: 155 year(s)
- Lease Expiry Date: 31/12/2166 (approx)
- Lease Term Remaining: 141 year(s) (approx)
- Service Charge: None
- Ground Rent: £250 per annum

### Description

A Beautifully Presented Home in a Popular Location

Brought to the market by Atlas Estate Agents, this beautifully presented semi-detached home on Ramsbury Drive, Speke, L24, offers stylish and spacious living in a highly convenient location, perfect for families, first-time buyers, or anyone seeking comfort and practicality in equal measure.

Set across two well-appointed floors, the accommodation begins with a bright and welcoming reception room, complete with a charming feature fireplace

and elegant French doors that open out to the generously sized rear garden — a wonderful space for entertaining or simply enjoying a peaceful evening outdoors. The stylish modern fitted kitchen provides a sleek and functional space for cooking and dining, while the convenience of a downstairs W.C. adds to the home's practical appeal.

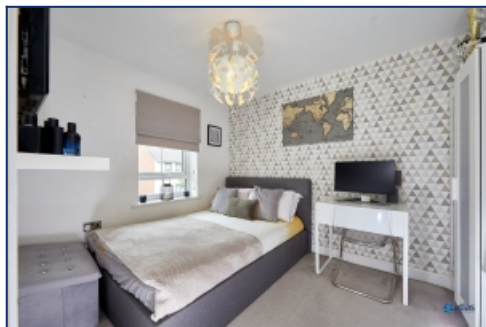
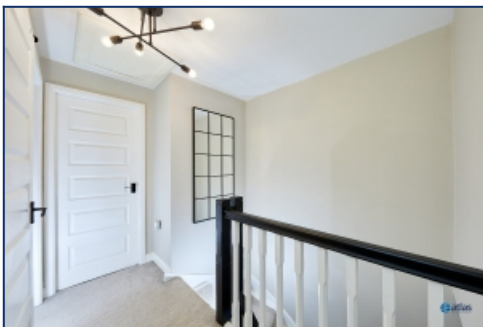
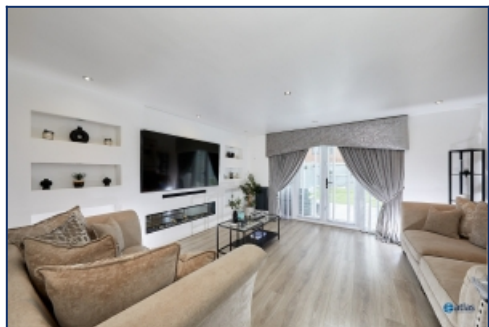
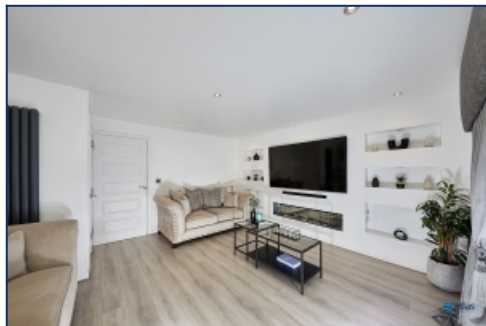
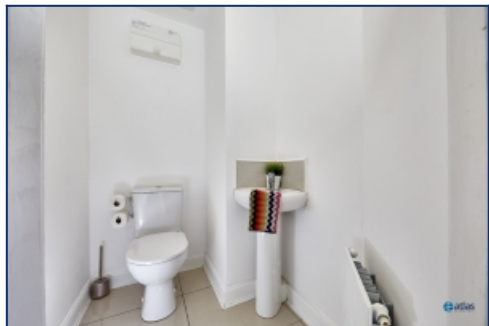
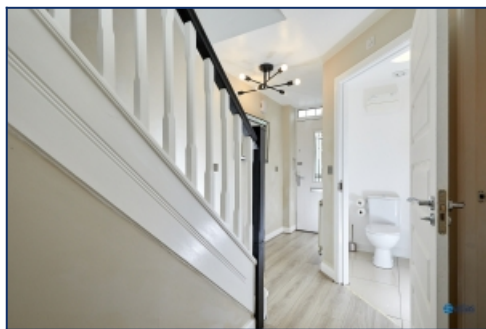
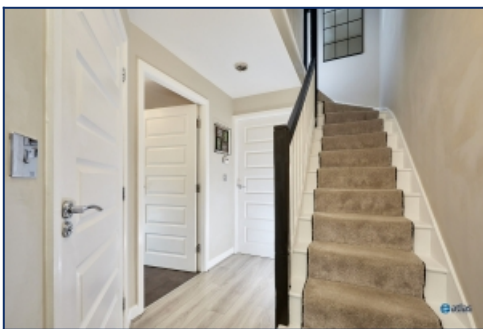
Upstairs, you'll find two spacious double bedrooms, alongside a flexible third bedroom that could serve as a home office, nursery, or guest room. The contemporary family bathroom is tastefully designed, offering a calming retreat at the end of the day.

Externally, the property boasts a well-maintained rear garden — ideal for families or those with a passion for gardening — along with a private driveway providing off-road parking.

Located just moments from the New Mersey Retail Park, with excellent transport links and a wide array of local amenities nearby, this fantastic home ticks all the right boxes for modern living.

Early viewing is highly recommended to fully appreciate everything this delightful property has to offer.

## Additional Images



## Floor Plans



Tel: 0151 727 2469  
Fax: 0151 727 4943

Atlas Estate Agents, 2 Allerton Road,  
Mossley Hill, Liverpool, L18 1LN

Email: [sales@atlasestateagents.co.uk](mailto:sales@atlasestateagents.co.uk)  
Website: [www.atlasestateagents.co.uk](http://www.atlasestateagents.co.uk)

These particulars are intended to give a fair and substantially correct overall description for the guidance of intending purchasers/tenants and do not constitute an offer or part of a contract. Please note that any services, heating systems or appliances have not been tested and no warranty can be given or implied as to their working order. Prospective purchasers/tenants ought to seek their own professional advice.

All descriptions, dimensions, areas, references to condition and necessary permissions for use and occupation and other details are given in good faith and are believed to be correct, but any intending purchasers/tenants should not rely on them as statements or representations of fact, but must satisfy themselves by inspection or otherwise as to the correctness of each of them.