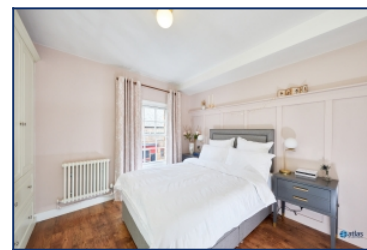
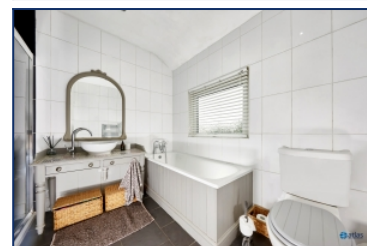


Mason Street, Woolton, L25



For Sale - £205,000 Offers Over

Key Features

- 1 Bedroom 1 Bathroom Terraced House
- EPC Rating: C
- No Onward Chain
- Beautiful Period Sandstone Cottage/terrace
- Open-plan Lounge and Kitchen Area
- Stylish Modern Kitchen with High-quality Fixtures
- Light-filled Double Bedroom with Built-in Wardrobe
- Contemporary Bathroom with Separate Bath and Shower
- Charming Private Yard
- Sought-after L25 Woolton Location
- Within Easy Reach of Woolton Village

Further Details

- Tenure: Freehold
- No. of Floors: 2
- Floor Space: 435 square feet / 40 square metres
- Council Tax Band: B
- Local Authority: Liverpool City Council
- Parking: On Street
- Outside Space: Back Yard
- Heating/Energy: Gas Central Heating

Description

A Charming Period Home in the Heart of Woolton

Presented by Atlas Estate Agents, this delightful period sandstone terraced house on Mason Street, Woolton, L25, offers a rare opportunity to acquire a character-filled property in one of the area's most sought-after locations.

Arranged over two floors, this beautiful cottage-style home boasts a spacious open-plan lounge and kitchen area, perfect for modern living and entertaining. The stylish kitchen is fitted with high-quality fixtures, making it both functional and visually appealing. Large windows allow natural light to pour in, creating a bright and welcoming atmosphere throughout the home.

Upstairs, the property offers a generously-sized double bedroom, complete with a built-in wardrobe, ensuring both ample storage and a comfortable, peaceful retreat. The contemporary bathroom features a separate bath and shower, offering a luxurious space to unwind after a long day.

To the rear, the home enjoys a charming private yard, ideal for outdoor relaxation or enjoying a cup of coffee in the fresh air.

Located within easy reach of Woolton Village, this property offers the perfect balance of tranquillity and convenience, with local amenities, parks, and excellent transport links all within close proximity.

With no onward chain, this home is ready for immediate occupancy and is ideal for both first-time buyers and those looking to downsize.

Don't miss your chance to view this stunning property—contact Atlas Estate Agents today to arrange a viewing.

Additional Images



Yard



Lounge / Kitchen



Lounge / Kitchen



Lounge / Kitchen



Lounge / Kitchen



Bedroom



Bathroom



Yard

Floor Plans



Tel: 0151 727 2469
Fax: 0151 727 4943

Atlas Estate Agents, 2 Allerton Road,
Mossley Hill, Liverpool, L18 1LN

Email: sales@atlasestateagents.co.uk
Website: www.atlasestateagents.co.uk

These particulars are intended to give a fair and substantially correct overall description for the guidance of intending purchasers/tenants and do not constitute an offer or part of a contract. Please note that any services, heating systems or appliances have not been tested and no warranty can be given or implied as to their working order. Prospective purchasers/tenants ought to seek their own professional advice.

All descriptions, dimensions, areas, references to condition and necessary permissions for use and occupation and other details are given in good faith and are believed to be correct, but any intending purchasers/tenants should not rely on them as statements or representations of fact, but must satisfy themselves by inspection or otherwise as to the correctness of each of them.