

## Mosslea Park, Mossley Hill, L18



**For Sale - £150,000**

### Key Features

- 1 Bedroom 1 Bathroom Apartment
- EPC Rating: C
- Beautifully Presented One-Bedroom, One-Bathroom Second-Floor Apartment for Sale, Offering Modern Living Throughout.
- You Are Welcomed Into the Property Via a Bright and Spacious Entrance Hallway, Providing Access to All Rooms.
- The Double Bedroom Is Well-Proportioned, Featuring a Large Window That Allows Plenty of Natural Light.
- The Living Room Is Modern and Well-Presented, with a Pleasant Outlook Over the Communal Gardens.
- The Kitchen Is Set Separately Within Its Own Space, Newly Fitted and Modern, with White Goods Included.
- The Bathroom Is Newly Fitted and Finished to a Contemporary Standard.
- The Property Further Benefits from Allocated Parking, with Curtains, Wardrobes, Made-To-Measure Radiator Covers and Fitted White Gloss Living Room Storage Units All Included in the Sale

### Further Details

- Tenure: Leasehold
- Floor: 2 (no lift)
- No. of Floors: 1
- Floor Space: 46 square metres / 492 square feet
- Council Tax Band: B
- Local Authority: Liverpool City Council
- Service Charge: £95.57 per month
- Ground Rent: £40 per year
- Parking: Allocated
- No. of Parking Spaces: 1
- Outside Space: Communal Gardens
- Heating/Energy: Gas Central Heating, Double Glazing
- Appliances/White Goods: Hob (Gas), Oven (Gas)

### Leasehold Details

- Tenure: Leasehold
- Lease Start Date: 01/02/1980 (approx)
- Original Lease Term: 999 year(s)
- Lease Expiry Date: 31/01/2979 (approx)
- Lease Term Remaining: 952 year(s) (approx)
- Service Charge: £96 per calendar month
- Ground Rent: £40 per annum
- Leasehold Information: No restrictions on keeping pets or sub-letting (both short and long term).

### Description

Atlas Estate Agents are delighted to present this beautifully presented one-bedroom apartment, situated on the second floor of a well-maintained development on Mosslea Park, Mossley Hill, L18, and offered for sale.

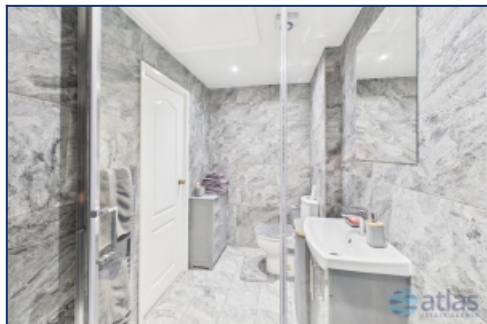
Arranged over one floor, the property offers modern and well-proportioned accommodation throughout. Upon entering, you are welcomed into a bright and spacious entrance hallway, providing access to all rooms.

The double bedroom is generously sized, benefitting from a large window which allows an abundance of natural light to fill the space. The living room is stylishly presented and modern in design, enjoying a pleasant outlook over the communal gardens.

The kitchen is positioned separately from the living area and has been newly fitted to a contemporary standard, complete with integrated white goods. The bathroom has also been recently updated and is finished beautifully in a modern style.

Further benefits include allocated parking, along with the inclusion of curtains, wardrobes, made-to-measure radiator covers and fitted white gloss living room storage units, making this an ideal turnkey opportunity for first-time buyers or investors alike.

## Additional Images



Bathroom



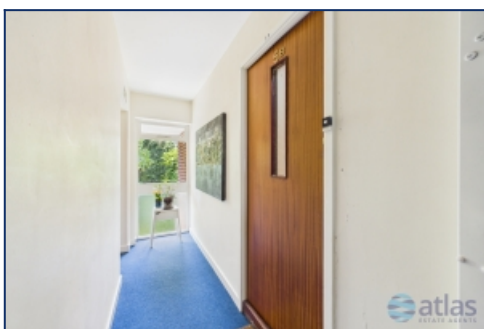
Communal Gardens



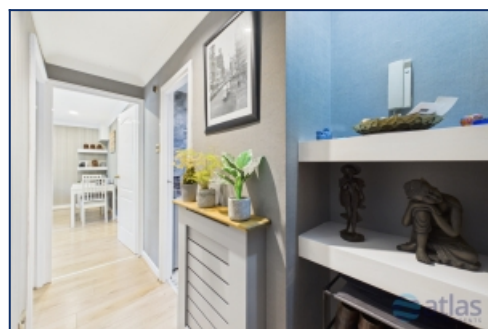
Front Elevation Of Building



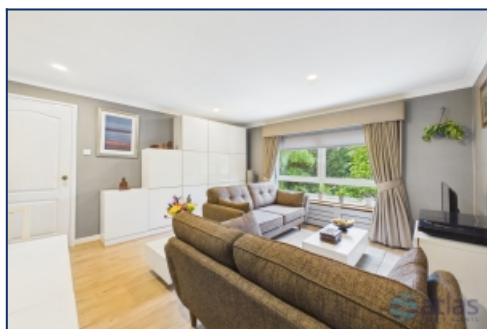
Front Elevation Of Building



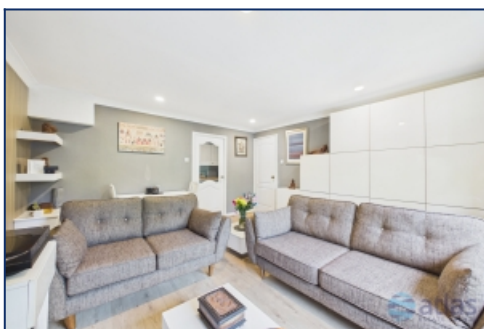
Communal Hallway & Entrance



Hallway



Living Space



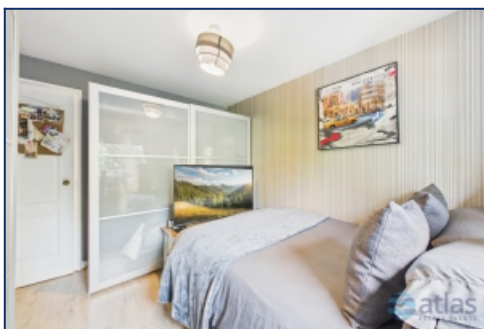
Living Space



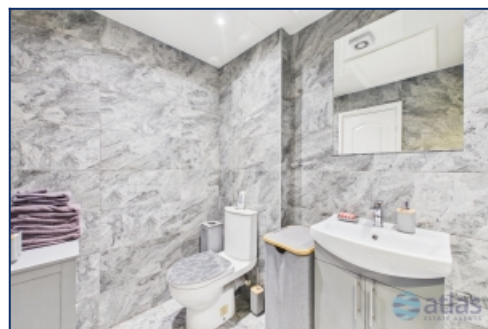
Kitchen



Kitchen



Bedroom

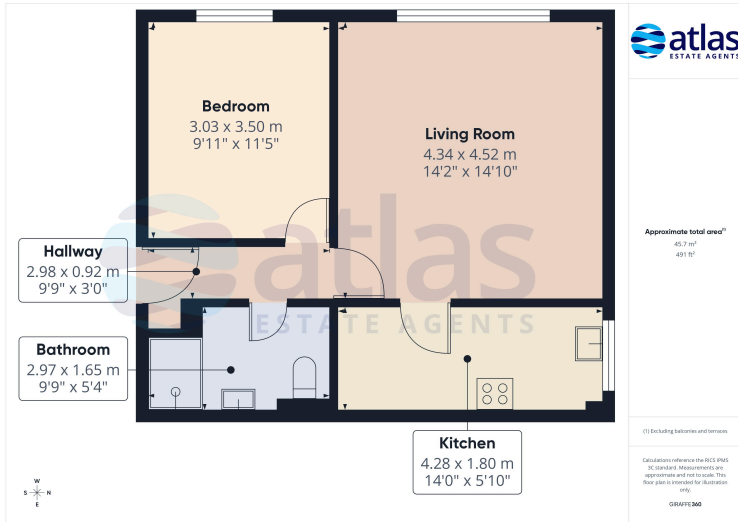


Bathroom



Communal Gardens & Parking

## Floor Plans



Tel: 0151 727 2469  
Fax: 0151 727 4943

Atlas Estate Agents, 2 Allerton Road,  
Mossley Hill, Liverpool, L18 1LN

Email: [sales@atlasestateagents.co.uk](mailto:sales@atlasestateagents.co.uk)  
Website: [www.atlasestateagents.co.uk](http://www.atlasestateagents.co.uk)

These particulars are intended to give a fair and substantially correct overall description for the guidance of intending purchasers/tenants and do not constitute an offer or part of a contract. Please note that any services, heating systems or appliances have not been tested and no warranty can be given or implied as to their working order. Prospective purchasers/tenants ought to seek their own professional advice.

All descriptions, dimensions, areas, references to condition and necessary permissions for use and occupation and other details are given in good faith and are believed to be correct, but any intending purchasers/tenants should not rely on them as statements or representations of fact, but must satisfy themselves by inspection or otherwise as to the correctness of each of them.