

## Gladstone Avenue, Childwall, L16



**For Sale - £270,000 Offers Over**

### Key Features

- 3 Bedroom 1 Bathroom Semi-Detached House
- EPC Rating: D
- Offered with No Onward Chain
- Excellent Scope for Personalisation
- Two Generously Sized Reception Rooms
- Functional Kitchen
- Three Well-proportioned Double Bedrooms
- Modern Family Bathroom
- Large and Well-maintained Rear Garden
- Attached Garage and Driveway
- Sought-after Residential Location in L16

### Further Details

- Tenure: Freehold
- No. of Floors: 2
- Floor Space: 1,002 square feet / 93 square metres
- Council Tax Band: C
- Local Authority: Liverpool City Council
- Parking: Off Street, Driveway
- Outside Space: Front Garden, Back Garden

### Description

Brought to the market with pride by Atlas Estate Agents, this charming semi-detached home on the ever-popular Gladstone Avenue in Childwall, L16 offers the perfect canvas for anyone looking to put down roots and make a house their own.

This attractive property, offered with no onward chain, boasts accommodation arranged over two well-proportioned floors, including three spacious double bedrooms, a functional kitchen, and a well-kept family bathroom that serves its purpose while offering scope for future updates.

At ground level, you'll find two generously sized reception rooms, perfect for entertaining, relaxing, or reimagining into open-plan living, should you wish. The living spaces are filled with natural light, offering excellent scope for personalisation and modernisation.

Upstairs, all three bedrooms are wonderfully sized doubles, providing ample space for families, guests, or a home office setup.

Outside, the home continues to impress with a large and well-maintained rear garden, ideal for those with a love of outdoor living, gardening, or summer barbecues. An attached garage and private driveway offer both practicality and convenience.

Positioned in a sought-after residential location within L16, this property sits within easy reach of excellent schools, local amenities, and transport links, making it ideal for families and professionals alike.



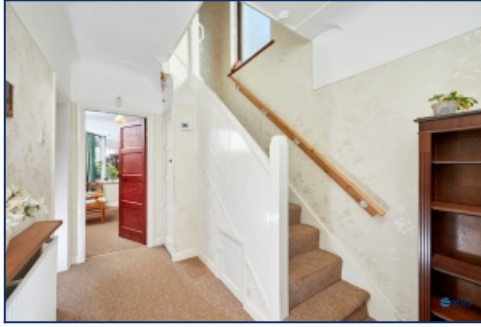
With no onward chain and endless potential, this is a home ready to welcome your vision and personal touch.

Enquire today to view this promising property with Atlas Estate Agents.

## Additional Images



Garden



Hallway



Lounge



Reception Room



Kitchen



Landing



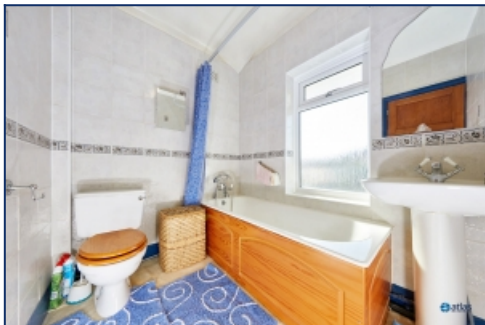
Bedroom



Bedroom



Bedroom



Bathroom



Garden



Garden

## Floor Plans



Tel: 0151 727 2469  
Fax: 0151 727 4943

Atlas Estate Agents, 2 Allerton Road,  
Mossley Hill, Liverpool, L18 1LN

Email: [sales@atlasestateagents.co.uk](mailto:sales@atlasestateagents.co.uk)  
Website: [www.atlasestateagents.co.uk](http://www.atlasestateagents.co.uk)

These particulars are intended to give a fair and substantially correct overall description for the guidance of intending purchasers/tenants and do not constitute an offer or part of a contract. Please note that any services, heating systems or appliances have not been tested and no warranty can be given or implied as to their working order. Prospective purchasers/tenants ought to seek their own professional advice.

All descriptions, dimensions, areas, references to condition and necessary permissions for use and occupation and other details are given in good faith and are believed to be correct, but any intending purchasers/tenants should not rely on them as statements or representations of fact, but must satisfy themselves by inspection or otherwise as to the correctness of each of them.