

Centreville Road, Allerton, L18



For Sale - £350,000 Offers in the Region of

Key Features

- 3 Bedroom 1 Bathroom End of Terrace House
- EPC Rating: D
- Spacious Lounge with Bay Window and Feature Fireplace
- Open-plan Kitchen and Dining Area
- Stylish Modern Kitchen with Integrated Appliances
- Convenient Utility Room
- Downstairs Wc
- Two Generously Sized Double Bedrooms
- Versatile Third Bedroom, Ideal as a Home Office or Child's Room
- Contemporary Family Bathroom with Bath and Overhead Shower
- Large, Low-maintenance Yard
- Prime Location Within Walking Distance of Allerton Road

Further Details

- Tenure: Freehold
- No. of Floors: 2
- Floor Space: 977 square feet / 91 square metres
- Council Tax Band: B
- Local Authority: Liverpool City Council
- Parking: On Street
- Outside Space: Back Yard
- Heating/Energy: Gas Central Heating, Double Glazing
- Appliances/White Goods: Electric Oven (Double), Electric Hob (Induction), Dishwasher

Description

Charming End-Terrace Home in the Heart of Allerton

Atlas Estate Agents are delighted to present this beautifully appointed three-bedroom end-of-terrace home, nestled in the highly sought-after Centreville Road, Allerton, L18. Offering an inviting blend of period charm and modern convenience, this property is an ideal choice for families, professionals, or those seeking a stylish home in a prime location.

Stepping inside, you are welcomed by a spacious lounge, bathed in natural light from the elegant bay window, while a striking feature fireplace adds warmth and character to the space. The heart of the home is the impressive open-plan kitchen and dining area, where a stylish modern kitchen boasts integrated appliances and sleek finishes—perfect for both everyday living and entertaining. A utility room provides additional practicality, alongside a convenient downstairs WC.

Ascending to the first floor, you'll find two generously sized double bedrooms, both offering ample space and versatility. A third bedroom, ideal as a home office, nursery, or guest room, completes the sleeping quarters. The contemporary family bathroom features a bath with an overhead shower, combining both style and functionality.

Externally, a large, low-maintenance yard provides an ideal outdoor space for relaxing or hosting gatherings. Situated just a short stroll from the vibrant Allerton Road, residents can enjoy an array of independent shops, cafés, restaurants, and excellent transport links.

This charming property offers the perfect combination of space, style, and location—early viewing is highly recommended!

Would you like any refinements to the description?

Additional Images



Yard



Hallway



Lounge



Dining Area



Kitchen / Dining Area



Kitchen / Dining Area



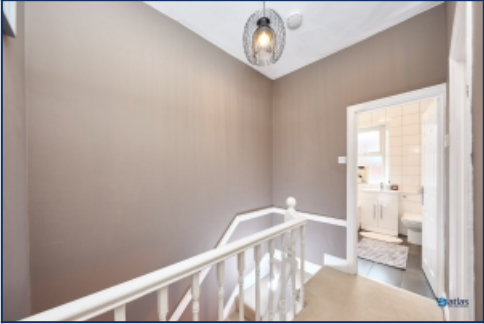
Kitchen / Dining Area



Utility Room



Downstairs W.c



Landing



Bedroom Two



Bedroom Three



Yard

Floor Plans



Tel: 0151 727 2469
Fax: 0151 727 4943

Atlas Estate Agents, 2 Allerton Road,
Mossley Hill, Liverpool, L18 1LN

Email: sales@atlasestateagents.co.uk
Website: www.atlasestateagents.co.uk

These particulars are intended to give a fair and substantially correct overall description for the guidance of intending purchasers/tenants and do not constitute an offer or part of a contract. Please note that any services, heating systems or appliances have not been tested and no warranty can be given or implied as to their working order. Prospective purchasers/tenants ought to seek their own professional advice.

All descriptions, dimensions, areas, references to condition and necessary permissions for use and occupation and other details are given in good faith and are believed to be correct, but any intending purchasers/tenants should not rely on them as statements or representations of fact, but must satisfy themselves by inspection or otherwise as to the correctness of each of them.