

Church Road, Woolton, L25



For Sale - £290,000 Offers Over

Key Features

- 2 Bedroom 1 Bathroom Terraced House
- EPC Rating: D
- Desirable L25 Woolton Location
- Stunning Original Fireplace in the Lounge
- Country-style Kitchen with a Belfast Sink
- Bathroom with Underfloor Heating and an Antique Sink
- Basement Converted Into a Cosy Sitting Room
- Two Spacious Double Bedrooms
- Characterful Cast Iron Radiators
- Attractive Sash Windows
- Charming, Low-maintenance Yard with Shed Storage
- Walking Distance to Woolton Village

Further Details

- Tenure: Freehold
- No. of Floors: 2
- Floor Space: 866 square feet / 80 square metres
- Council Tax Band: C
- Local Authority: Liverpool City Council
- Parking: On Street
- Outside Space: Front Garden, Back Yard
- Heating/Energy: Gas Central Heating, Double Glazing
- Appliances/White Goods: Gas Oven, Fridge/Freezer

Description

Charming Terraced Home in the Heart of Woolton

Atlas Estate Agents proudly present this enchanting terraced house, perfectly situated on the sought-after Church Road in Woolton, L25. This delightful property effortlessly combines period charm with modern comfort, offering a truly inviting space to call home.

Step inside to discover a generous lounge filled with character and warmth. The front lounge takes centre stage with its stunning original fireplace, creating a cosy retreat for relaxing evenings. The charm continues throughout the home with beautifully preserved cast iron radiators and attractive sash windows, flooding the rooms with natural light.

The heart of the home is the country-style kitchen, designed with both style and functionality in mind. Complete with a traditional Belfast sink, it's the perfect spot for culinary creativity. Downstairs, the converted basement offers a snug sitting room, ideal for unwinding with a good book or hosting intimate gatherings.

Upstairs, you'll find two spacious double bedrooms, each thoughtfully designed to provide a restful sanctuary. The bathroom is a standout feature, boasting luxurious underfloor heating and an elegant antique sink, blending rustic charm with modern convenience.

Outside, the charming, low-maintenance yard is a peaceful escape, complete with handy shed storage. Its tranquil setting complements the convenience of being within walking distance of Woolton Village, renowned for its vibrant community, local eateries, and picturesque surroundings.

This delightful home is arranged over two floors, offering versatile living in a prestigious location. A perfect blend of old-world elegance and contemporary comfort awaits you—book your viewing today!

Additional Images



Sitting Room/Basement



Sitting Room/Basement



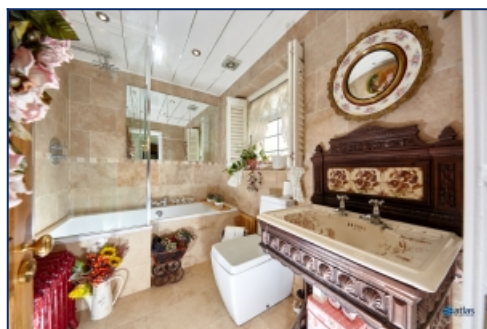
Kitchen



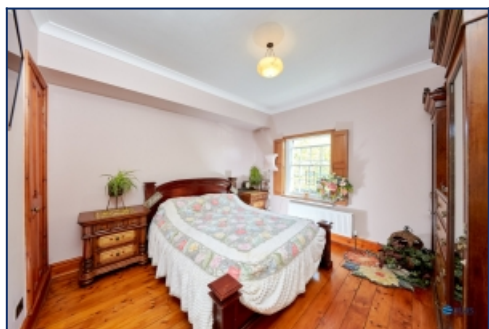
Kitchen



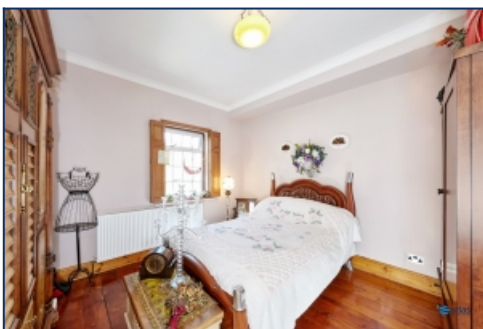
Hallway



Bathroom



Bedroom



Bedroom



Yard



Yard



Front External

Floor Plans

