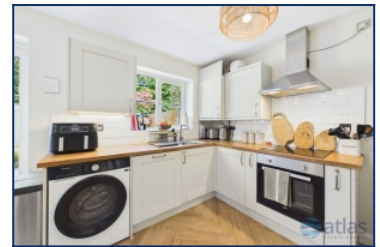


Oak Grange, Halewood, L26



For Sale - £240,000 Offers in Excess of

Key Features

- 3 Bedroom 2 Bathroom Semi-Detached House
- EPC Rating: C
- Stylish and Spacious Reception Room Featuring Elegant Herringbone Flooring, a Bay Window and a Charming Electric Stove
- Contemporary Fitted Kitchen/Diner with Integrated Appliances and French Doors Opening Onto the Garden
- Three Well-Proportioned Bedrooms Comprising Two Comfortable Doubles and One Single, All Finished with Fitted Carpets
- Principal Bedroom Benefiting from a Modern En-Suite Shower Room
- Generously Sized Family Bathroom Finished to a High Standard
- Attractive and Well-Maintained Rear Garden with a Patio Area, Ideal for Outdoor Dining and Entertaining
- Large Private Driveway Providing Off-Road Parking for Two Vehicles
- Conveniently Located Close to Well-Regarded Schools, Local Parks and the Train Station for Excellent Transport Links
- Convenient Downstairs Wc

Further Details

- Tenure: Leasehold
- No. of Floors: 2
- Floor Space: 74 square metres / 793 square feet
- Council Tax Band: B
- Local Authority: Knowsley Metropolitan Borough Council
- Ground Rent: £150 per year
- Parking: Driveway
- No. of Parking Spaces: 2
- Outside Space: Back Garden
- Heating/Energy: Gas Central Heating, Double Glazing
- Appliances/White Goods: Oven (Electric), Hob (Ceramic), Fridge/Freezer, Dishwasher

Leasehold Details

- Tenure: Leasehold
- Lease Start Date: 01/01/2004 (approx)
- Original Lease Term: 999 year(s)
- Lease Expiry Date: 31/12/3002 (approx)
- Lease Term Remaining: 976 year(s) (approx)
- Service Charge: None
- Ground Rent: £150 per annum

Description

Atlas Estate Agents are delighted to bring to the market this beautifully presented three-bedroom semi-detached home, situated within the sought-after Oak Grange development in Halewood, L26. Offered for sale with no onward chain, this attractive property combines contemporary styling with practical family living, making it an excellent opportunity for a wide range of buyers.

Arranged over two floors, the accommodation is both spacious and thoughtfully designed. At the heart of the home is a stylish reception room, where

elegant herringbone flooring, a charming bay window and a characterful electric stove create a warm and inviting atmosphere, perfect for relaxing or entertaining guests.

To the rear, a contemporary fitted kitchen/diner offers an impressive space for modern family life. Complete with integrated appliances and ample dining space, the room is flooded with natural light thanks to French doors that open seamlessly onto the garden, creating an effortless connection between indoor and outdoor living.

The first floor hosts three well-proportioned bedrooms, comprising two comfortable double rooms and a generous single bedroom, all finished with fitted carpets for a cosy and welcoming feel. The principal bedroom further benefits from a sleek en-suite shower room, while a generously sized family bathroom has been finished to a high standard, providing both style and practicality.

Externally, the property continues to impress with an attractive and well-maintained rear garden. Featuring a patio area ideal for al fresco dining, summer entertaining or simply enjoying the outdoors, it offers a wonderful extension of the living space. To the front, a large private driveway provides off-road parking for two vehicles.

Perfectly positioned for families and commuters alike, the property enjoys convenient access to well-regarded local schools, nearby parks and the train station, offering excellent transport links across the region.

A superb home in a desirable location, early viewing is highly recommended.

Additional Images



Kitchen/Diner



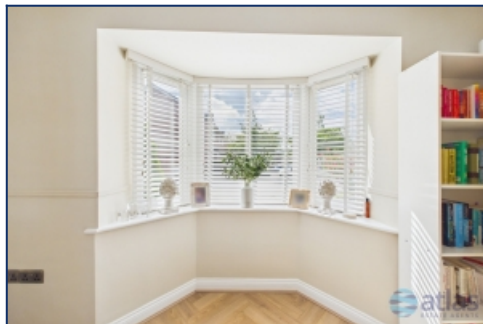
Kitchen/Diner



Kitchen/Diner



Reception Room



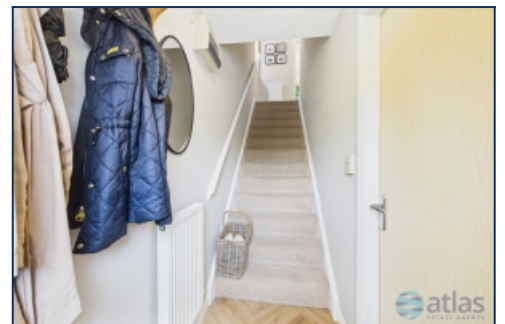
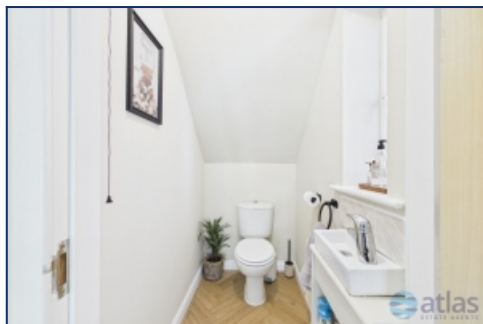
Reception Room



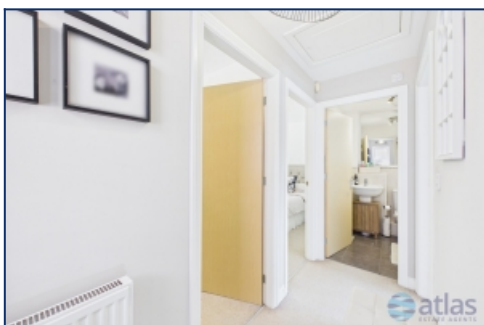
Reception Room



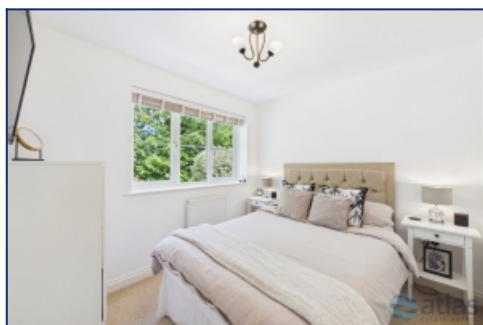
Reception Room



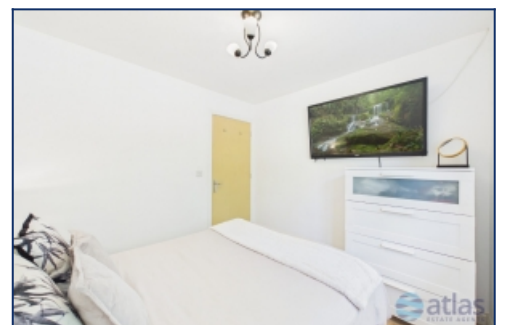
Hallway



Landing



Bedroom One



Bedroom One



Bedroom Two



Bedroom Two



Bedroom Two



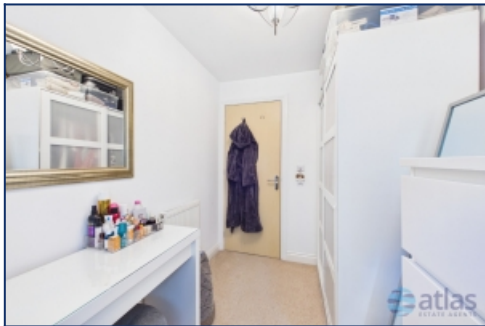
Bedroom Two En-suite



Bathroom



Bedroom Three



Bedroom Three



Garden



Garden



Garden



Garden



Aerial View Of Plot

Floor Plans



Fax: 0151 727 4943

Mossley Hill, Liverpool, L18 1LN

Website: www.atlasestateagents.co.uk

These particulars are intended to give a fair and substantially correct overall description for the guidance of intending purchasers/tenants and do not constitute an offer or part of a contract. Please note that any services, heating systems or appliances have not been tested and no warranty can be given or implied as to their working order. Prospective purchasers/tenants ought to seek their own professional advice.

All descriptions, dimensions, areas, references to condition and necessary permissions for use and occupation and other details are given in good faith and are believed to be correct, but any intending purchasers/tenants should not rely on them as statements or representations of fact, but must satisfy themselves by inspection or otherwise as to the correctness of each of them.