

Lisburn Lane, Old Swan, L13



For Sale - £180,000 Offers Over

Key Features

- 3 Bedroom 1 Bathroom Terraced House
- EPC Rating: C
- Located in the Sought-after Old Swan, L13 Area
- Bright and Airy Lounge Featuring a Charming Log Burner and Bay Window
- Stylish Open Plan Kitchen and Dining Area, Ideal for Entertaining
- Contemporary Newly-fitted Kitchen with High-quality Integrated Appliances
- Two Generously-sized Double Bedrooms
- Versatile Third Bedroom, Perfect as an Office or Nursery
- Sleek Modern Bathroom with Full-size Bath and Overhead Shower
- Low-maintenance, Easy-care Rear Yard
- Elegant Shutters Fitted to All Windows

Further Details

- Tenure: Freehold
- No. of Floors: 2
- Floor Space: 985 square feet / 92 square metres
- Council Tax Band: A
- Local Authority: Liverpool City Council
- Ground Rent: Peppercorn
- Parking: On Street
- Outside Space: Back Yard
- Appliances/White Goods: Electric Oven (Double), Electric Hob (Induction), Microwave, Wine Cooler

Description

Brought to the market by Atlas Estate Agents, this beautifully presented terraced home on Lisburn Lane, in the ever-popular Old Swan, L13, is a delightful blend of style, comfort, and practicality.

Step inside and be welcomed by a bright and airy lounge, where a charming bay window and cosy log burner set the tone for relaxed evenings and quiet moments. Elegant shutters frame every window, adding a refined touch and privacy throughout the home.

Flowing seamlessly from the lounge is a second reception room, opening into a stylish, open plan kitchen and dining area — a space that truly comes alive for entertaining. The newly-fitted kitchen is sleek and contemporary, boasting high-quality integrated appliances and thoughtful design, perfect for the modern home cook.

Spread across two well-proportioned floors, the accommodation offers three bedrooms: two generously-sized doubles that provide ample space for rest and relaxation, and a third, versatile bedroom ideal as a home office, nursery, or creative space.

The modern bathroom is both stylish and functional, featuring a full-size bath with overhead shower, perfect for unwinding after a long day.

Outside, a low-maintenance rear yard provides a private retreat for a morning coffee or summer evening drink, without the upkeep of a traditional garden.

Set in the heart of sought-after Old Swan, this home combines excellent local amenities with elegant, easy living — a must-see for anyone looking to settle in one of Liverpool's most vibrant communities.

Additional Images



Yard



Hallway



Hallway



Lounge



Dining Room



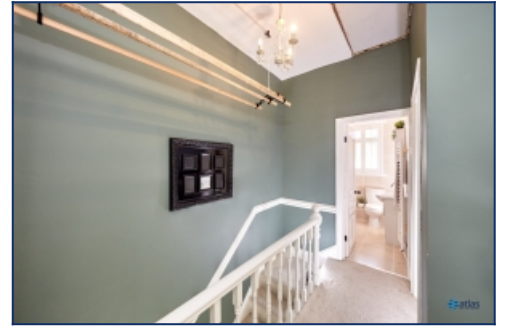
Dining Room



Dining Room/Kitchen



Kitchen



Landing



Bedroom



Bedroom



Yard



Yard

Floor Plans



Tel: 0151 727 2469
 Fax: 0151 727 4943

Atlas Estate Agents, 2 Allerton Road,
 Mossley Hill, Liverpool, L18 1LN

Email: sales@atlasestateagents.co.uk
 Website: www.atlasestateagents.co.uk

These particulars are intended to give a fair and substantially correct overall description for the guidance of intending purchasers/tenants and do not constitute an offer or part of a contract. Please note that any services, heating systems or appliances have not been tested and no warranty can be given or implied as to their working order. Prospective purchasers/tenants ought to seek their own professional advice.

All descriptions, dimensions, areas, references to condition and necessary permissions for use and occupation and other details are given in good faith and are believed to be correct, but any intending purchasers/tenants should not rely on them as statements or representations of fact, but must satisfy themselves by inspection or otherwise as to the correctness of each of them.