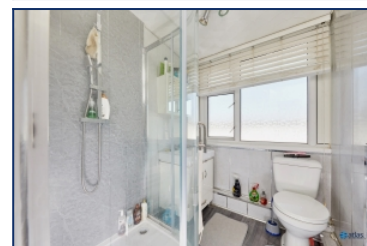


Newton Way, City Centre, L3



For Sale - £230,000

Key Features

- 3 Bedroom 1 Bathroom Terraced House
- EPC Rating: D
- Fitted Kitchen
- Lounge with Featured Fireplace
- Additional Storage Cupboards in Lounge
- Bright Sun Room Leading Off the Lounge
- Generously Sized Double Bedroom
- Two Flexible, Versatile Bedrooms
- Stylish Modern Bathroom with Shower
- Low-Maintenance Yard and Decking Area for Easy Care
- Ideally Located Near the City Centre
- Excellent Transport Links, Just a Short Walk to Liverpool Lime Street

Further Details

- Tenure: Freehold
- No. of Floors: 2
- Floor Space: 797 square feet / 74 square metres
- Council Tax Band: A
- Local Authority: Liverpool City Council
- Parking: On Street
- Outside Space: Patio/Decking, Front Garden, Back Yard
- Heating/Energy: Gas Central Heating, Double Glazing

Description

A Charming Terraced House on Newton Way, City Centre, L3 – Brought to the Market by Atlas Estate Agents

Situated in the heart of Liverpool's bustling City Centre, this charming terraced house on Newton Way offers a perfect combination of practicality and style, making it an ideal choice for first-time buyers or investors. Spread over two floors, the property is designed to make the most of its space while offering modern living in an unbeatable location.

On entering, you'll be greeted by a fitted kitchen, ideal for preparing meals with ease, flowing seamlessly into a cosy reception room. The lounge area, featuring a lovely fireplace, provides a warm and inviting atmosphere, and the additional storage cupboards ensure a tidy and organised living space. Just off the lounge, you'll find a bright sunroom, filled with natural light, perfect for relaxing, reading, or enjoying your morning coffee.

Upstairs, you'll find three bedrooms. The double bedroom offers a comfortable space for rest and relaxation, while the two smaller bedrooms provide versatile options, whether as a guest room, home office, or additional storage. The stylish, modern bathroom features a sleek shower, creating a refreshing space to unwind after a busy day.

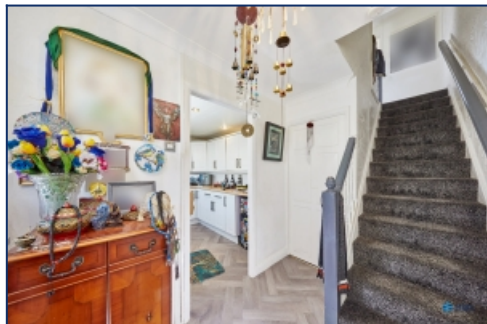
Outside, the low-maintenance yard and decking area provide an easy-to-care-for outdoor space, perfect for enjoying the fresh air or dining al fresco with

minimal upkeep.

Conveniently located just a short walk from Liverpool Lime Street, this property is ideally placed for excellent transport links, offering easy access to the city and beyond. Whether you're commuting or enjoying everything the city has to offer, this location is second to none.

This charming terraced house presents a fantastic opportunity for those seeking a well-located home in the heart of Liverpool. Contact Atlas Estate Agents today to arrange a viewing and see for yourself what this property has to offer.

Additional Images



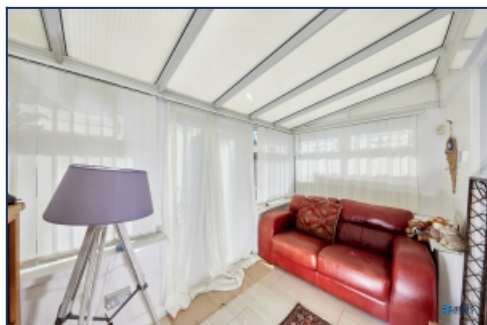
Hallway



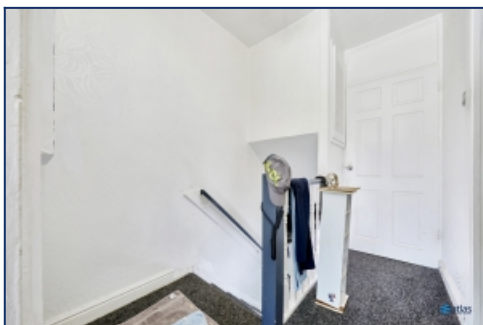
Kitchen



Lounge



Sunroom



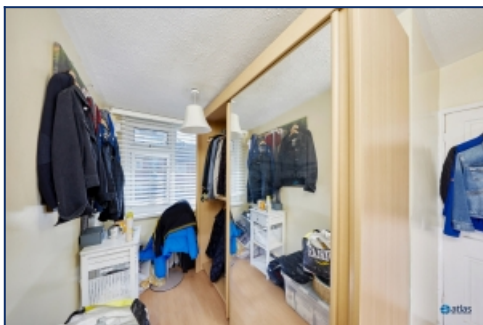
Landing



Bedroom



Bedroom



Wardrobe/Bedroom



Yard

Floor Plans



Tel: 0151 727 2469
Fax: 0151 727 4943

Atlas Estate Agents, 2 Allerton Road,
Mossley Hill, Liverpool, L18 1LN

Email: sales@atlasestateagents.co.uk
Website: www.atlasestateagents.co.uk

These particulars are intended to give a fair and substantially correct overall description for the guidance of intending purchasers/tenants and do not constitute an offer or part of a contract. Please note that any services, heating systems or appliances have not been tested and no warranty can be given or implied as to their working order. Prospective purchasers/tenants ought to seek their own professional advice.

All descriptions, dimensions, areas, references to condition and necessary permissions for use and occupation and other details are given in good faith and are believed to be correct, but any intending purchasers/tenants should not rely on them as statements or representations of fact, but must satisfy themselves by inspection or otherwise as to the correctness of each of them.