

## North Drive, Wavertree, L15



**For Sale - £990,000 Offers Over**

### Key Features

- 9 Bedroom 3 Bathroom Semi-Detached House
- EPC Rating: D
- Three-bedroom Detached House
- Two-bedroom Apartment
- Charming Period Property with Exceptional Potential
- Spacious, Bright, and Airy Rooms
- Generous Kitchen with Ample Space
- Three Well-appointed Bathrooms
- Characterful Fireplaces in the Bedrooms
- Additional Storage Space on the Ground Floor
- Expansive Garden for All Properties
- Sought-after Wavertree L15 Location

### Further Details

- Tenure: Freehold
- No. of Floors: 3
- Floor Space: 6,059 square feet / 563 square metres
- Council Tax Band: F
- Local Authority: Liverpool City Council
- Parking: Off Street, Driveway
- Outside Space: Front Garden, Back Garden

### Description

Charming Period Property with Exceptional Potential

Brought to the market by Atlas Estate Agents, this distinguished semi-detached house, located on the ever-popular North Drive in Wavertree, L15, offers a fantastic opportunity for those seeking a home full of character, space, and potential. Arranged across three expansive floors, this property provides generous accommodation with nine bedrooms, three reception rooms, and three well-appointed bathrooms, making it an ideal choice for large families or those wishing to create their dream home.

As you enter, you are greeted by spacious, bright, and airy rooms, each offering the perfect blend of period charm and modern potential. The ground floor boasts a substantial kitchen, complete with ample space for culinary creativity, as well as additional storage, providing practicality without compromising on style.

The three reception rooms offer an abundance of versatile living space, ideal for both relaxing and entertaining. Each of the nine bedrooms is a welcoming retreat, with many featuring charming fireplaces that enhance the period features throughout the property.

The house is further complemented by a sizable garden, providing an idyllic outdoor space for family gatherings, gardening enthusiasts, or simply

unwinding in privacy.

This exceptional property is ready for its next chapter. Located in the highly sought-after Wavertree area, you'll benefit from easy access to local amenities, excellent transport links, and a thriving community.

This period gem, with its spacious layout, abundant natural light, and remarkable potential, is sure to impress. Early viewing is highly recommended to truly appreciate all this remarkable home has to offer.

#### Charming Detached Home with Character

This unique detached house on North Drive, Wavertree, L15, offers a fantastic opportunity in a sought-after location. Arranged over two floors, the property features three bedrooms, one reception room, and two bathrooms, with spacious, bright, and airy rooms throughout.

The generous modern kitchen provides ample space for family meals, while characterful beams in the bedrooms add charm. Additional storage on the landing ensures convenience, and the expansive garden offers the perfect outdoor retreat.

This property is ready to move into and is ideally situated near local amenities and transport links. Early viewing is highly recommended.

#### Spacious 2-Bedroom Apartment in Wavertree

This unique two-bedroom apartment on North Drive, Wavertree, L15, offers spacious, bright accommodation all on one floor. Featuring a large lounge, modern kitchen, two generous double bedrooms, and a bathroom with both a bath and overhead shower, this property is perfect for comfortable living.

An expansive garden, it's ideally located for easy access to local amenities and transport links. Early viewing is highly recommended.

## Additional Images



Reception Room



Garden/External



Entrance



Hallway



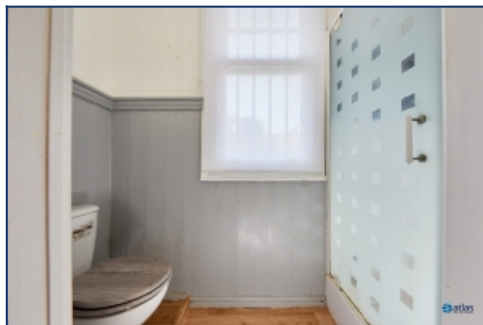
Reception Room



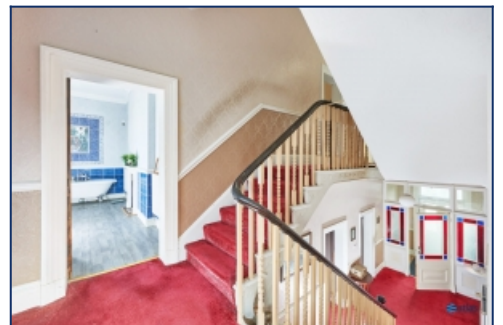
Kitchen



Utility



Downstairs Toilet



Landing

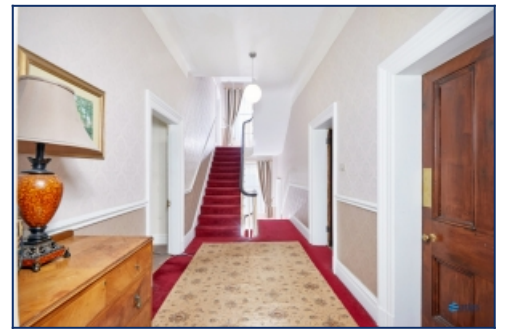




Bedroom



Bathroom



Landing



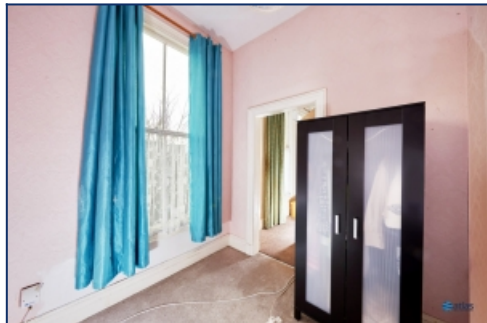
Bedroom



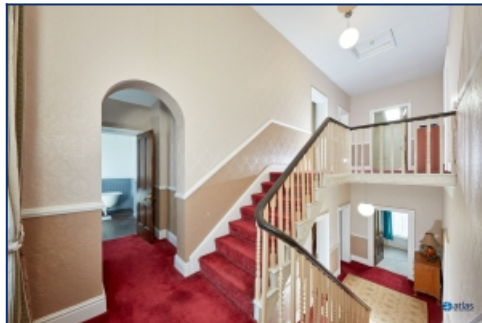
Bedroom



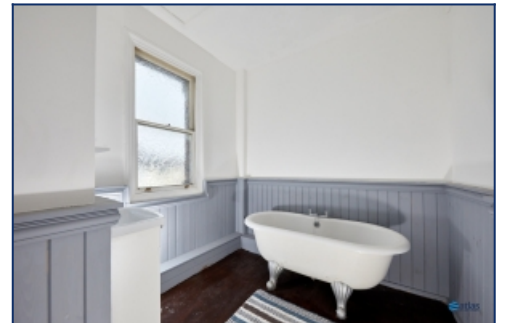
Bedroom



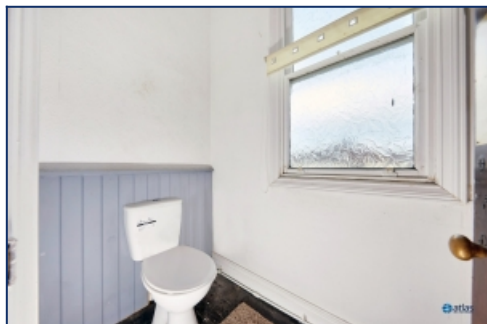
Bedroom



Landing



Bathroom



W.c



Bedroom



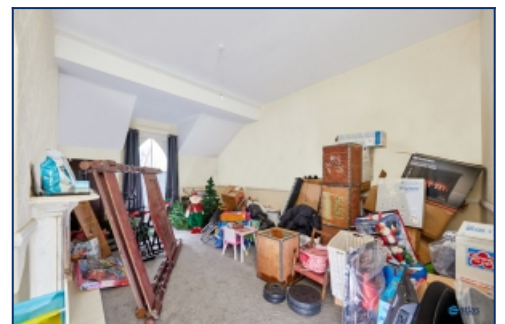
Bedroom



Bedroom

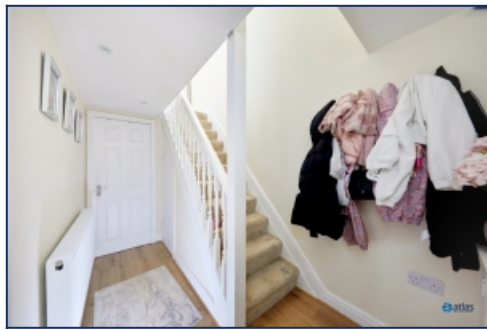


Room



Bedroom





Entrance



Lounge



Kitchen/Dining



Bathroom



Landing



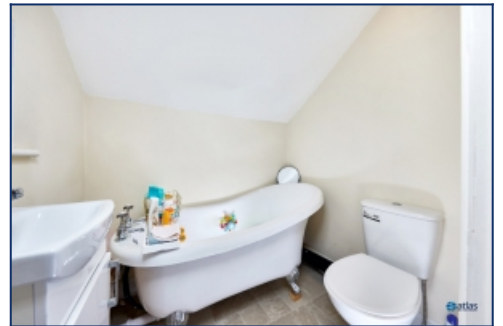
Bedroom



Bedroom



Bedroom



En-suite Bathroom



Apartment



Entrance



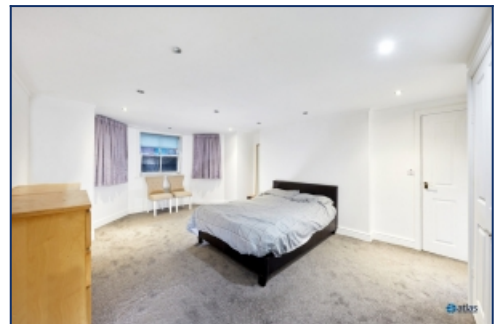
Lounge



Kitchen



Bedroom



Bedroom



Bathroom



Garden

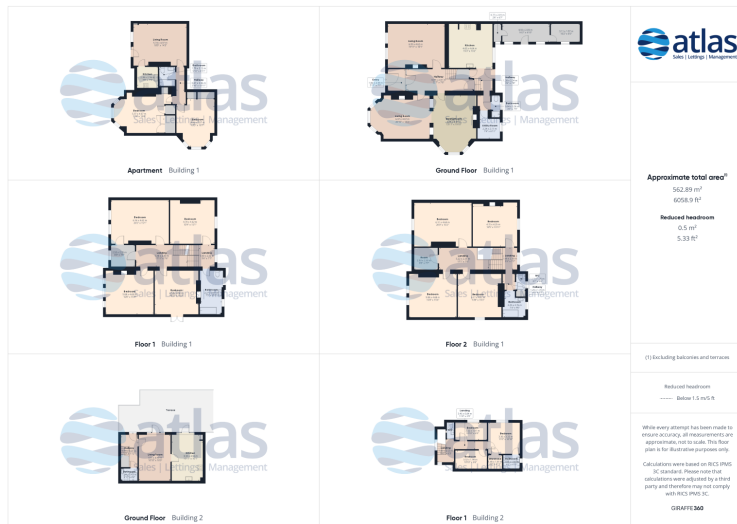


Garden/External



External

## Floor Plans



Tel: 0151 727 2469  
Fax: 0151 727 4943

Atlas Estate Agents, 2 Allerton Road,  
Mossley Hill, Liverpool, L18 1LN

Email: [sales@atlasestateagents.co.uk](mailto:sales@atlasestateagents.co.uk)  
Website: [www.atlasestateagents.co.uk](http://www.atlasestateagents.co.uk)

These particulars are intended to give a fair and substantially correct overall description for the guidance of intending purchasers/tenants and do not constitute an offer or part of a contract. Please note that any services, heating systems or appliances have not been tested and no warranty can be given or implied as to their working order. Prospective purchasers/tenants ought to seek their own professional advice.

All descriptions, dimensions, areas, references to condition and necessary permissions for use and occupation and other details are given in good faith and are believed to be correct, but any intending purchasers/tenants should not rely on them as statements or representations of fact, but must satisfy themselves by inspection or otherwise as to the correctness of each of them.