

Merton Crescent, Huyton, L36



For Sale - £260,000 Offers Over

Key Features

- 3 Bedroom 1 Bathroom Semi-Detached House
- EPC Rating: C
- Beautiful Family Home in the Sought-after L36 Area
- Spacious Lounge with a Feature Fireplace
- Open-plan Living and Kitchen Area, Perfect for Modern Living
- Contemporary Fitted Kitchen with High-quality Finishes
- Flexible Downstairs Room Ideal for Use as an Office or Additional Living Space
- Two Generous Double Bedrooms
- Versatile Third Bedroom, Suitable for a Variety of Uses
- Stylish Modern Bathroom with Both a Bath and Overhead Shower
- Expansive, Well-maintained Garden - Ideal for Outdoor Entertaining
- Ample Driveway for Two Cars

Further Details

- Tenure: Freehold
- No. of Floors: 2
- Floor Space: 1,011 square feet / 94 square metres
- Council Tax Band: B
- Local Authority: Knowsley Metropolitan Borough Council
- Security: Burglar Alarm
- Parking: Driveway
- No. of Parking Spaces: 2
- Outside Space: Back Garden
- Heating/Energy: Gas Central Heating, Double Glazing
- Appliances/White Goods: Electric Cooker, Fridge/Freezer, Washing Machine

Description

Atlas Estate Agents are delighted to present this beautifully appointed semi-detached residence, proudly positioned on the ever-popular Merton Crescent in Huyton, L36 - a true gem of a family home that offers both comfort and contemporary style.

Set across two well-proportioned floors, this inviting property welcomes you with a spacious lounge, bathed in natural light and centred around a charming feature fireplace - the perfect setting for cosy evenings in. Flowing seamlessly from here is the open-plan living and kitchen area, an ideal space for modern family life and entertaining alike. The contemporary fitted kitchen boasts sleek, high-quality finishes, making everyday living a pleasure.

The ground floor also benefits from a flexible reception room that can be tailored to your needs - whether it be a peaceful home office, a playroom, or a second living space.

Upstairs, the home continues to impress with two generous double bedrooms and a versatile third bedroom, ready to adapt to a child's room, nursery, dressing room, or guest space. A stylish, modern bathroom completes the upper floor, featuring both a bathtub and an overhead shower to suit every routine.

Step outside and discover an expansive, well-maintained garden - a private oasis perfect for summer barbecues, family gatherings, or simply relaxing under the sun. To the front, an ample driveway provides off-road parking for two vehicles.

Whether you're a growing family or a first-time buyer seeking space and sophistication, this charming home in the sought-after L36 postcode ticks every box.

Offered for sale by Atlas Estate Agents - don't miss the opportunity to make this superb property your own.

Additional Images



Garden



Hallway



Lounge



Reception/Kitchen



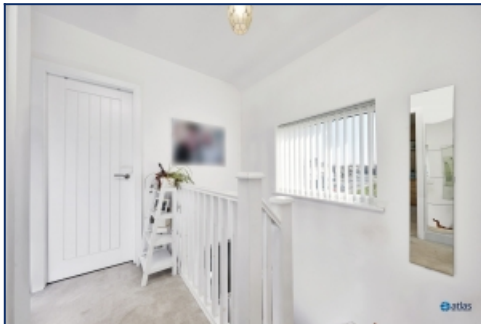
Reception Room



Kitchen



Office



Landing



Bedroom



Bedroom



Bedroom



Garden

Floor Plans

