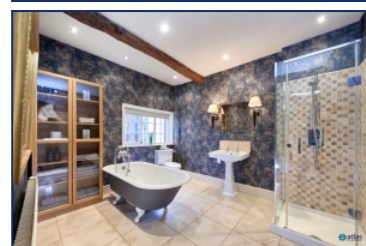


Gateacre Brow, Gateacre, L25



For Sale - £575,000 Offers in the Region of

Key Features

- 5 Bedroom 2 Bathroom Semi-Detached House
- EPC Rating: Pending
- Charming Georgian Property Brimming with Character
- Spacious Lounge with Sash Windows and Log Burner
- Stylish Modern Kitchen/Diner
- Convenient Utility Room
- Ground-Floor W.C.
- Fully Converted Basement for Additional Living Space
- Five Double Bedrooms, Including Two Loft Rooms
- Elegant Modern Bathroom with Freestanding Bath and Shower
- Additional Bathroom with Bathtub
- Beautifully Presented, Fully Refurbished Family Home in the Highly Sought-After L25 Area

Further Details

- Tenure: Freehold
- No. of Floors: 4
- Floor Space: 2,319 square feet / 215 square metres
- Council Tax Band: C
- Local Authority: Liverpool City Council
- Parking: On Street
- Heating/Energy: Gas Central Heating

Description

A Georgian Gem in the Heart of Gateacre – No Onward Chain

Brought to the market by Atlas Estate Agents, this exquisite five-bedroom semi-detached Georgian home is a rare find in the highly sought-after Gateacre Brow, L25. Brimming with charm and character, this beautifully refurbished property seamlessly blends period elegance with modern sophistication, offering a truly unique family home.

Spread over four impressive floors, the accommodation is as spacious as it is stylish. The ground floor welcomes you with two inviting reception rooms, including a lounge bathed in natural light from classic sash windows, complete with a cosy log burner—the perfect setting for relaxing evenings. The modern kitchen/diner is a true showstopper, boasting sleek finishes and ample space for family gatherings, complemented by a separate utility room and a convenient ground-floor W.C.

Descending to the fully converted basement, you'll find an additional versatile living space—ideal for a home office, cinema room, or playroom, tailored to suit your lifestyle.

The upper floors are home to five generously proportioned double bedrooms, including two charming loft rooms, each offering a peaceful retreat. The accommodation is serviced by two stylish bathrooms, one featuring a luxurious freestanding bath and walk-in shower, while the other provides a classic bathtub for a relaxing soak.

Immaculately presented and recently refurbished to the highest standard, this stunning home is ready to welcome its next chapter. With no onward chain, the buying process is made even smoother, allowing you to move in with ease.

Located in the heart of Gateacre Village, with its picturesque surroundings and excellent amenities, this property is an opportunity not to be missed.

Could this be the perfect home for you? Arrange a viewing today with Atlas Estate Agents.

Additional Images



Bedroom Four



Lounge



Lounge



Lounge



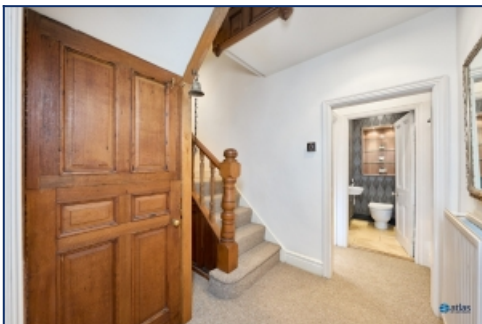
Reception Room



Hallway



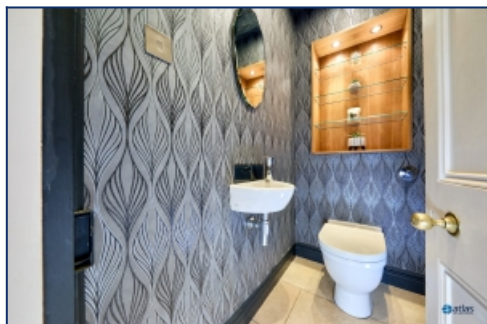
Kitchen



Hallway



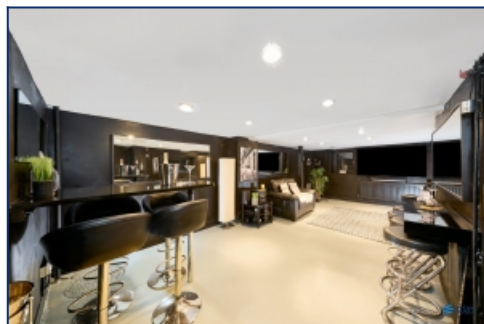
Utility Room



W.c



Basement



Basement



Floor Plans



Tel: 0151 727 2469
Fax: 0151 727 4943

Atlas Estate Agents, 2 Allerton Road,
Mossley Hill, Liverpool, L18 1LN

Email: sales@atlasestateagents.co.uk
Website: www.atlasestateagents.co.uk

These particulars are intended to give a fair and substantially correct overall description for the guidance of intending purchasers/tenants and do not constitute an offer or part of a contract. Please note that any services, heating systems or appliances have not been tested and no warranty can be given or implied as to their working order. Prospective purchasers/tenants ought to seek their own professional advice.

All descriptions, dimensions, areas, references to condition and necessary permissions for use and occupation and other details are given in good faith and are believed to be correct, but any intending purchasers/tenants should not rely on them as statements or representations of fact, but must satisfy themselves by inspection or otherwise as to the correctness of each of them.