

Seafarers Drive, Gateacre, L25



To Let - £1,350 per calendar month

Key Features

- 2 Bedroom 1 Bathroom End of Terrace House
- EPC Rating: C
- Available Now
- Minutes from Woolton Village
- Downstairs W.c
- Secure & Gated Off Street Parking
- Served by Good Transport Links
- Modern Fitted Kitchen and Bathroom
- Private Patio and Communal Gardens
- Two Double Bedrooms
- Double Glazing & Gas Central Heating
- Early Viewing Advised

Move-in Costs

- Security Deposit: £1,557.69
- To secure this property you are required to pay a holding deposit equal to one weeks rent, £311.54. The holding deposit will go on to form part of your rent/security deposit. The balance of any rent/security deposit is normally payable the working day before you move in.

Description

Seafarers Retreat: Your Gateway to Serene Living

Presented by Atlas Estate Agents

Nestled within the picturesque community of Gateacre, along the tranquil Seafarers Drive, this charming semi-detached house is a true gem awaiting its next occupants. Available for rent, this inviting abode offers a harmonious blend of modern comforts and classic elegance, creating the perfect haven for

Further Details

- Furnishing: Unfurnished
- No. of Floors: 2
- Floor Space: 89 square metres / 958 square feet
- Council Tax Band: C
- Local Authority: Liverpool City Council
- Parking: Visitors, Off Street, Gated, Communal
- Outside Space: Patio/Decking, Communal Gardens
- Heating/Energy: Gas Central Heating, Double Glazing
- Appliances/White Goods: Electric Cooker, Fridge, Freezer, Washing Machine
- Bills Included: None

Letting Information

- Date Available From: Now
- Minimum Term: 12 months
- Minimum Annual Household Income: £40,500
- Guarantor NOT required (subject to referencing)
- Pets NOT considered
- Smoking NOT permitted

those seeking a serene lifestyle.

Home Highlights:

Two Levels of Comfort: With accommodation thoughtfully arranged over two floors, this home provides a spacious and well-designed layout, ensuring ample room for relaxation and enjoyment.

Elegance Meets Functionality: Step into the warm embrace of a beautifully appointed kitchen, complemented by contemporary appliances and ample counter space, making every culinary endeavor a delightful experience. The reception room, boasting an abundance of natural light, welcomes you to unwind and create cherished memories.

Your Private Oasis: Offering two tastefully designed bedrooms, restful nights are assured. The recently refurbished bathroom promises to be a haven of tranquility, boasting modern fittings and pristine aesthetics.

Stylishly Furnished: This property comes fully furnished, creating an effortless transition into your new dream home.

Charming and Spacious: Embrace the generous 89 square meters of living space, providing room for relaxation and entertainment.

A Prime Location: Situated only minutes away from the enchanting Woolton Village, residents can enjoy a vibrant community with an array of boutiques, cafes, and cultural hotspots.

Convenience Redefined: Appreciate the presence of a convenient downstairs W.C, adding ease and comfort to your daily routines.

Security and Ease: Relish in the safety of gated off-street parking, providing peace of mind and hassle-free commuting.

Accessible Connectivity: Enjoy excellent transport links, ensuring effortless connectivity to the heart of the city and beyond.

Modern Comforts: Benefit from the convenience of double glazing and gas central heating, enhancing the energy efficiency of your home.

Outdoor Bliss: Unwind and entertain in your private patio while also relishing the communal gardens, where nature's beauty surrounds you.

Your Serene Sanctuary Awaits - Early Viewing Recommended!

This delightful rental opportunity presents an idyllic retreat for those longing to embrace the best of modern living in a tranquil neighborhood. If you seek a beautifully appointed home with an array of amenities and the charm of Woolton Village at your doorstep, Seafarers Retreat is the perfect choice. Early viewing is highly encouraged as this gem is sure to be in high demand!

Contact Atlas Estate Agents today to book your viewing and take the first step towards your new serene lifestyle.

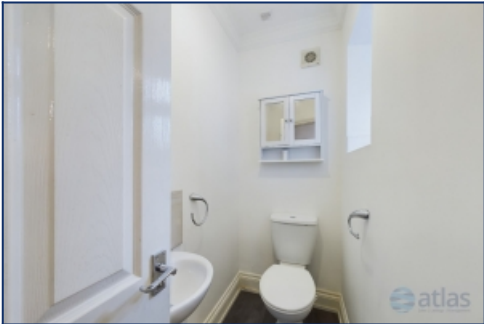
Additional Images



Hallway/Entrance



Entrance



Downstairs W.c



Kitchen



Kitchen



Landing



Bedroom

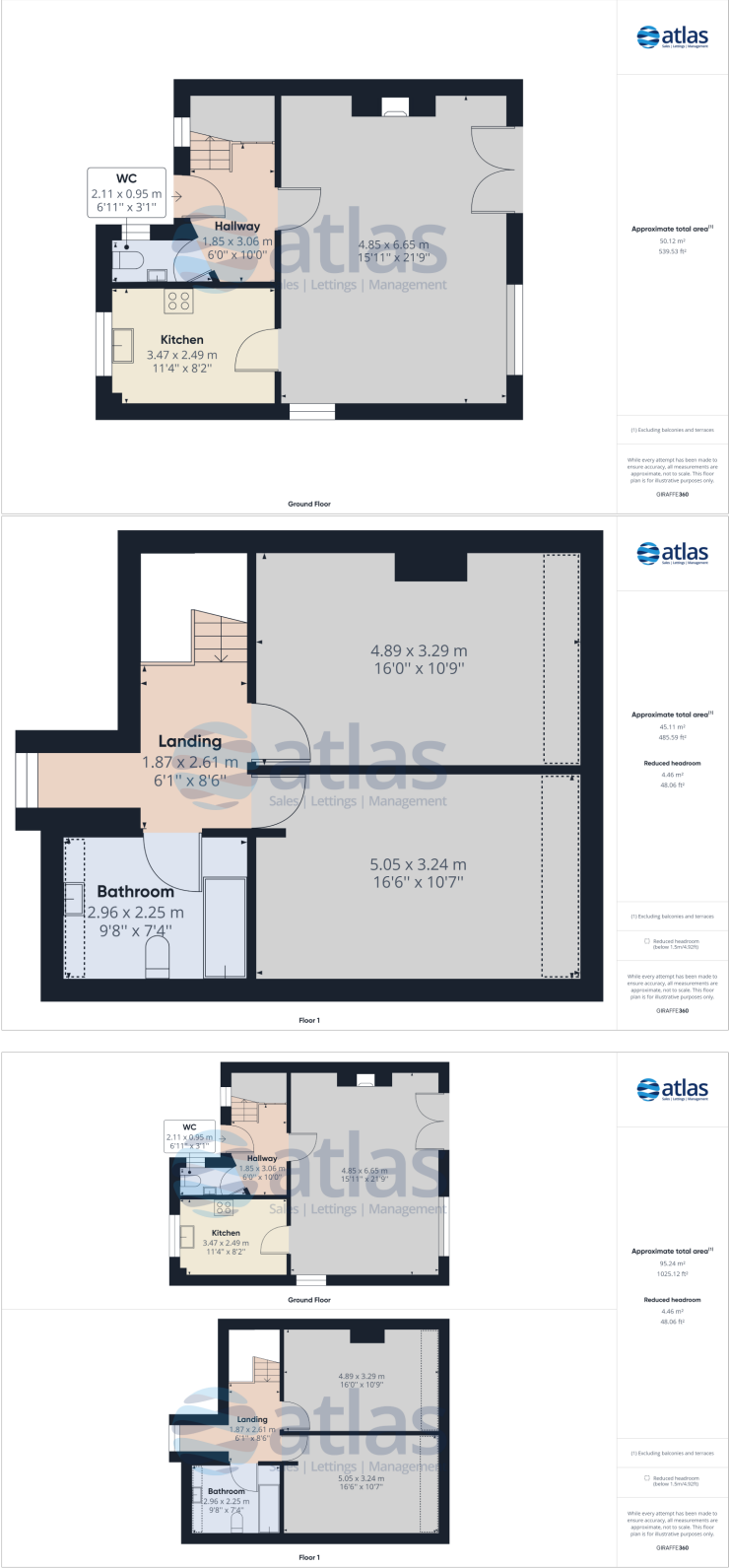


Bedroom



Bathroom

Floor Plans



These particulars are intended to give a fair and substantially correct overall description for the guidance of intending purchasers/tenants and do not constitute an offer or part of a contract. Please note that any services, heating systems or appliances have not been tested and no warranty can be given or implied as to their working order. Prospective purchasers/tenants ought to seek their own professional advice.

All descriptions, dimensions, areas, references to condition and necessary permissions for use and occupation and other details are given in good faith and are believed to be correct, but any intending purchasers/tenants should not rely on them as statements or representations of fact, but must satisfy themselves by inspection or otherwise as to the correctness of each of them.