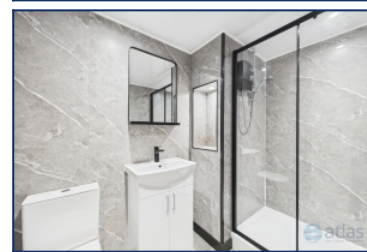
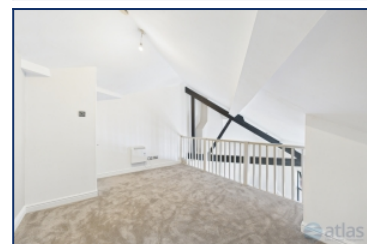
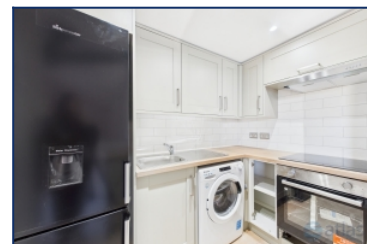


Smithdown Road, Wavertree, L15



To Let - £900 per calendar month

Key Features

- 2 Bedroom 1 Bathroom Flat
- EPC Rating: D59
- Ready for Immediate Occupation
- Sought-After Location in Wavertree, L15
- Beautifully Presented and Well Maintained Throughout
- Recently Renovated to a High Standard
- Stylish Newly Fitted Modern Kitchen
- Three Spacious Double Bedrooms, Including One on a Mezzanine Level
- Contemporary Newly Fitted Bathroom Suite
- Superb Transport Links Nearby
- Within Easy Walking Distance of Allerton Road

Move-in Costs

- Security Deposit: £1,038.46
- To secure this property you are required to pay a holding deposit equal to one weeks rent, £207.69. The holding deposit will go on to form part of your rent/security deposit. The balance of any rent/security deposit is normally payable the working day before you move in.

Description

Stylish Split-Level Living in the Heart of Wavertree

Brought to the market by Atlas Estate Agents, this beautifully presented and recently renovated flat is now available to let in the ever-popular Wavertree area, L15. Set over two floors and situated on the third floor of a well-maintained building on vibrant Smithdown Road, this property offers stylish living in a location known for its energy, convenience and strong community feel.

Further Details

- Furnishing: Unfurnished
- Floor: 3 (no lift)
- No. of Floors: 2
- Floor Space: 645 square feet / 60 square metres
- Council Tax Band: A
- Local Authority: Liverpool City Council
- Security: Intercom (Audio Only)
- Outside Space: Back Yard
- Heating/Energy: Gas Central Heating, Double Glazing
- Appliances/White Goods: Electric Cooker
- Bills Included: None

Letting Information

- Date Available From: Now
- Minimum Term: 12 months
- Minimum Annual Household Income: £27,000
- Guarantor NOT required (subject to referencing)
- Pets NOT considered
- Smoking NOT permitted

Step inside and discover a fresh, contemporary interior finished to an impressive standard. The accommodation boasts a bright and welcoming reception room, a newly fitted modern kitchen with sleek units and integrated appliances, and a stunning, newly installed bathroom suite with a crisp, contemporary finish.

There are three generously proportioned double bedrooms—two on the main floor and a third positioned on a striking mezzanine level, ideal for those looking for a unique and versatile space.

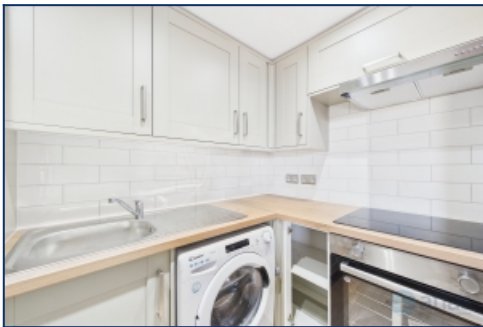
Offered unfurnished and ready for immediate occupation, this flat is perfect for professionals or sharers seeking a high-quality home in a prime location. Just a short walk from the cafes, bars and shops of Allerton Road, with superb transport links close by, this property truly ticks all the boxes for stylish city living.

Don't miss your chance to secure a home in one of South Liverpool's most sought-after areas. Enquire today to arrange your viewing.

Additional Images



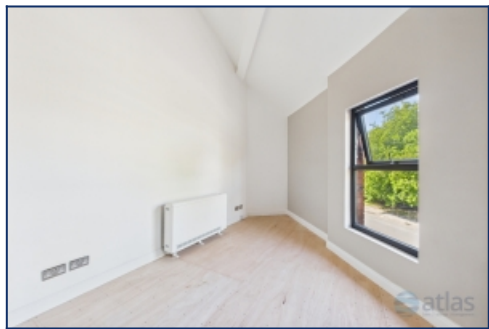
Kitchen



Kitchen



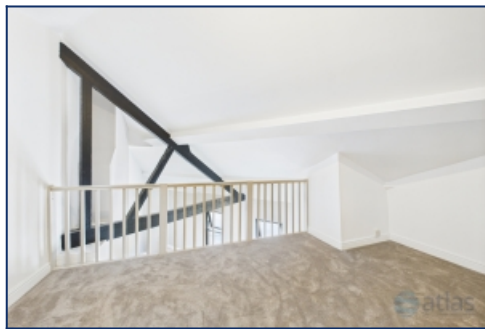
Lounge



Lounge



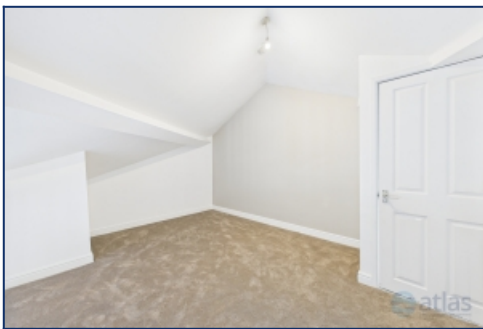
Bedroom One



Bedroom Two



Bedroom Two



Bedroom Three



Bedroom Three



Bedroom Three



Bathroom

Floor Plans

