

Druidsville Road, Mossley Hill, L18



To Let - £2,000 per calendar month

Key Features

- 3 Bedroom 2 Bathroom Detached Bungalow
- EPC Rating: C70
- Bright & Airy with Stunning Views
- Fantastic Mature Front & Huge Rear Gardens
- Comfortable, Spacious Kitchen
- Beautifully Presented Family Home in Highly Desirable Area of L18
- Well Proportioned Bedrooms
- Gardener and Window Cleaner Provided
- Bars, Restaurants and Coffee Shops Seconds Away
- Close to Amenities, Popular Schools and Good Public Transport Links
- Off Street Parking
- Early Viewing Advised

Move-in Costs

- Security Deposit: £2,307.69
- To secure this property you are required to pay a holding deposit equal to one weeks rent, £461.54. The holding deposit will go on to form part of your rent/security deposit. The balance of any rent/security deposit is normally payable the working day before you move in.

Description

Introducing an exclusive offering from Atlas Estate Agents, a truly remarkable property poised to redefine your living experience. Nestled in the coveted Druidsville Road, L18, this detached bungalow is a beacon of elegance and comfort.

Step into a world of refined living as you enter this spacious abode, where each detail has been meticulously crafted to create a home that is both luxurious and practical.

Further Details

- Furnishing: Unfurnished
- No. of Floors: 2
- Floor Space: 2,475 square feet / 230 square metres
- Council Tax Band: G
- Local Authority: Liverpool City Council
- Security: Burglar Alarm
- Parking: Off Street, Garage, Driveway
- Outside Space: Front Garden, Back Garden
- Heating/Energy: Gas Central Heating, Double Glazing
- Appliances/White Goods: Electric Oven (Double), Electric Hob (Ceramic), Microwave, Fridge/Freezer, Washing Machine, Dishwasher
- Bills Included: None

Letting Information

- Date Available From: Now
- Minimum Term: 12 months
- Minimum Annual Household Income: £60,000
- Guarantor NOT required (subject to referencing)
- Pets NOT considered
- Smoking NOT permitted

Upon opening the front door, you'll be greeted by a sunlit haven with a captivating layout. The main floor boasts a comfortable kitchen, perfect for culinary enthusiasts seeking to whip up their culinary masterpieces. This is complemented by not one, but two inviting reception rooms, providing ample space for relaxation and entertaining, 2 bedrooms and a full sized family bathroom with another separate WC,

Ascend to the upper level, and you'll discover a generously proportioned master bedroom, offering privacy and tranquility with another well-appointed bathroom and a fantastic walk through wardrobe, mornings will be a breeze, and evenings, a time of relaxation and rejuvenation.

Natural light flows effortlessly through this home, illuminating the spacious interiors and offering breathtaking views that will leave you enchanted. The rear garden, a sprawling oasis of tranquility, is a horticultural masterpiece, while the front garden adds a touch of mature elegance to your surroundings. We'll even take care of the maintenance of the gardens and the window cleaning for you.

This property is offered unfurnished, allowing you to put your unique stamp on your new abode, creating a space that truly reflects your personal style.

Situated in the highly sought-after area of L18, this beautifully presented family home is a stone's throw away from popular schools, ensuring the best education for your loved ones. The neighbourhood is also brimming with amenities, including bars, restaurants, and coffee shops, where you can indulge in culinary delights and social gatherings just moments from your doorstep.

For those who require seamless commuting options, good public transport links are at your disposal, making your daily journeys effortless. Off-street parking ensures your convenience and peace of mind.

In summary, this property is more than just a home; it's a lifestyle. If you seek a comfortable, spacious, and meticulously designed residence in a highly desirable area, we urge you to book an early viewing. Opportunities like this do not linger, and your dream home awaits. Don't miss out on the chance to call this stunning bungalow yours. Contact Atlas Estate Agents today, and let us make your dreams a reality.

Additional Images



Lounge



Lounge



Lounge



Rear Lounge



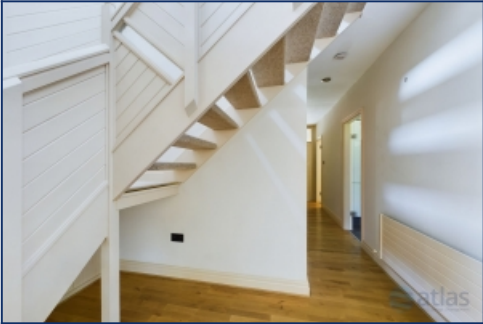
Rear Lounge



Lounge



Stairs



Stairs



Family Room



Family Room



Family Room



Dining Area/Conservatory



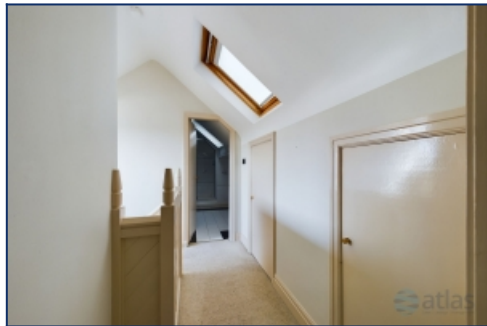
Kitchen



Kitchen



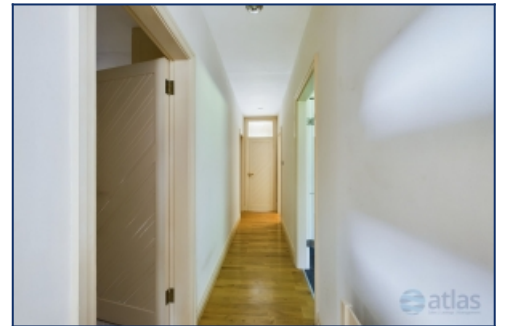
Utility Area



Hallway



Hall



Hall



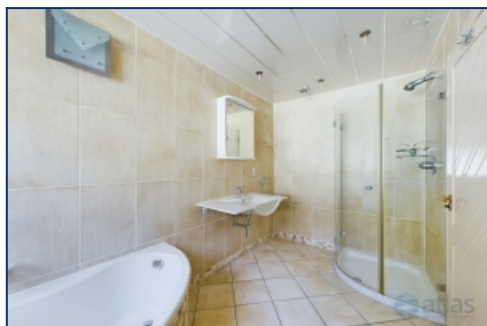
Bedroom



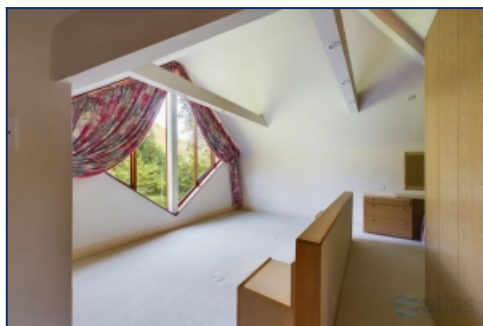
Bedroom



Bathroom 1



Bathroom 1



Bedroom



Bedroom



Bedroom



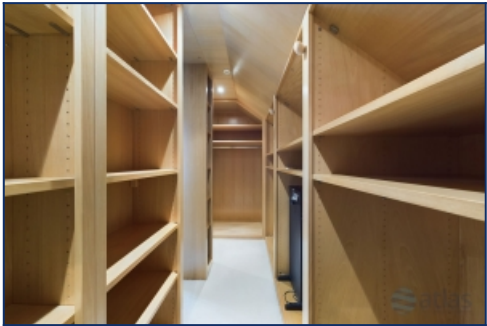
En Suite



Bedroom



Bedroom



Walk In Wardrobe



Bathroom 2



External Rear



Back External



Back External



Back External

Floor Plans

