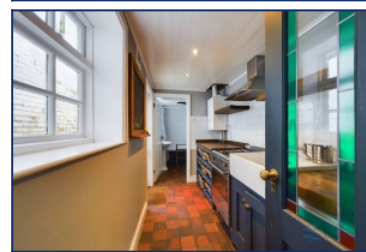
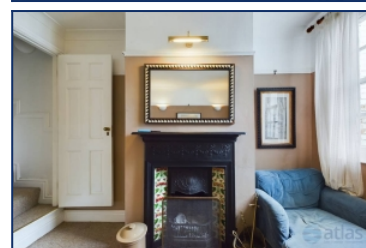
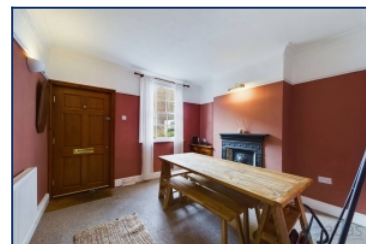


St Marys Street, Woolton, L25



To Let - £900 per calendar month

Key Features

- 2 Bedroom 1 Bathroom Terraced House
- EPC Rating: D68
- Beautiful Mid Terraced Property With Period Features
- Charming Rustic Kitchen, Featuring Belfast Sink
- Family Bathroom Complete With Bath & Shower
- Quaint Courtyard With Gated Access
- On Street Car Parking
- Great Public Transport Links
- Amongst Excellent Amenities of Woolton Village
- Close to Sought After Schools
- Close to Beautiful Parks
- Walking Distance to Many Independent Bars and Restaurants

Further Details

- Furnishing: Unfurnished
- No. of Floors: 2
- Floor Space: 60 square metres / 646 square feet
- Council Tax Band: B
- Local Authority: Liverpool City Council
- Security: Burglar Alarm
- Parking: On Street
- Outside Space: Back Yard
- Heating/Energy: Gas Central Heating
- Appliances/White Goods: Gas Cooker, Fridge/Freezer, Washing Machine, Washer Dryer
- Bills Included: None

Move-in Costs

- Security Deposit: £1,038.46
- To secure this property you are required to pay a holding deposit equal to one weeks rent, £207.69. The holding deposit will go on to form part of your rent/security deposit. The balance of any rent/security deposit is normally payable the working day before you move in.

Letting Information

- Date Available From: Now
- Minimum Term: 12 months
- Minimum Annual Household Income: £27,000
- Guarantor NOT required (subject to referencing)
- Pets NOT considered
- Smoking NOT permitted

Description

Introducing a real gem in the heart of Woolton Village

Brought to the market by Atlas Estate Agents, we are thrilled to present this exquisite terraced house for rent, nestled on the charming St Marys Street, Woolton, L25. This stunning two-bedroom property is a true testament to classic architecture and modern comfort, offering an enchanting living experience.

As you step inside, you're immediately captivated by the warm ambiance that envelops the house. The accommodation is thoughtfully arranged over two

floors, making it an ideal home for a small family or professionals looking for a cosy abode.

The heart of this beautiful residence is the rustic kitchen, featuring a classic Belfast sink. Whether you're a culinary enthusiast or simply enjoy gathering around a rustic dining table, this kitchen will surely inspire your culinary creativity.

The property boasts two reception rooms, allowing you to create your own distinct spaces for relaxation and entertainment. The period features throughout the house add a touch of character that is truly unique.

For your convenience, there's a family bathroom complete with both a bath and shower. Relax and unwind after a long day in the luxurious bathtub or get ready in a hurry with a refreshing shower.

Step outside into the quaint courtyard, a perfect oasis for your morning coffee or an evening under the stars. With gated access, it's both a secure and private space.

Parking is a breeze with on-street car parking, while excellent public transport links make commuting a breeze. This property is also perfectly situated among the excellent amenities of Woolton Village, placing you within walking distance of independent bars and restaurants, charming shops, and all the essentials you need.

But that's not all; families will appreciate the proximity to sought-after schools, and nature lovers will delight in the beautiful parks that are just a stone's throw away. Enjoy a leisurely stroll or a picnic in the lush green spaces nearby.

In summary, this charming terraced house is more than just a property; it's a chance to become part of the vibrant Woolton community and savor all that this beautiful area has to offer. Don't miss out on the opportunity to make this your home, where classic charm meets modern comfort. Contact Atlas Estate Agents today to arrange a viewing and embark on your new journey in Woolton Village.

Additional Images



Bedroom 2



Bedroom 1



Dining Room



Living Room



Living Room



Kitchen



Bathroom



Yard

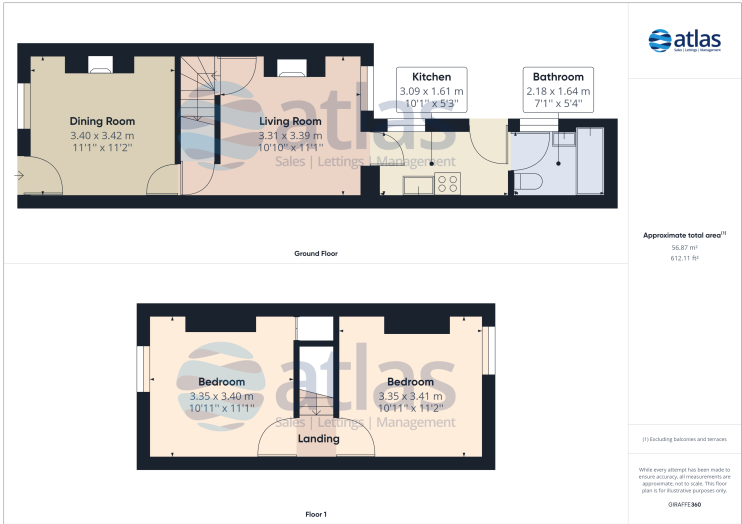


Yard



Front

Floor Plans



Tel: 0151 727 2469
Fax: 0151 727 4943

Atlas Estate Agents, 2 Allerton Road,
Mossley Hill, Liverpool, L18 1LN

Email: lettings@atlasestateagents.co.uk
Website: www.atlasestateagents.co.uk

These particulars are intended to give a fair and substantially correct overall description for the guidance of intending purchasers/tenants and do not constitute an offer or part of a contract. Please note that any services, heating systems or appliances have not been tested and no warranty can be given or implied as to their working order. Prospective purchasers/tenants ought to seek their own professional advice.

All descriptions, dimensions, areas, references to condition and necessary permissions for use and occupation and other details are given in good faith and are believed to be correct, but any intending purchasers/tenants should not rely on them as statements or representations of fact, but must satisfy themselves by inspection or otherwise as to the correctness of each of them.