

The Dales, Halewood, L26



To Let - £2,000 per calendar month

Key Features

- 3 Bedroom 2 Bathroom Terraced House
- EPC Rating: B
- A Boutique Development of Nine Exceptional Three-Bedroom Homes
- Finished to a High Specification Throughout
- Contemporary Open-Plan Kitchen and Dining Area with Integrated Appliances
- Convenient Downstairs Wc and Separate Utility Room
- Impressive Principal Suite on the Second Floor with Walk-In Wardrobe and En-Suite Bathroom
- Private Rear Garden Laid to Lawn with Indian Stone Patio and Fenced Boundaries
- Block-Paved Driveway Providing Parking for Two Cars Plus Three Visitor Spaces
- Luxuriously Appointed, Tiled Bathrooms
- Energy-Efficient Air Source Heat Pump Providing Lower Running Costs

Move-in Costs

- Security Deposit: £2,307.69
- To secure this property you are required to pay a holding deposit equal to one weeks rent, £461.54. The holding deposit will go on to form part of your rent/security deposit. The balance of any rent/security deposit is normally payable the working day before you move in.

Further Details

- Furnishing: Unfurnished
- No. of Floors: 3
- Floor Space: 120 square metres / 1,292 square feet
- Council Tax Band: C
- Local Authority: Knowsley Metropolitan Borough Council
- Parking: Visitors, Off Street, Driveway, Allocated
- No. of Parking Spaces: 2
- Outside Space: Patio/Decking, Back Garden
- Heating/Energy: Electric Heating, Double Glazing
- Appliances/White Goods: Oven (Electric), Microwave, Fridge/Freezer, Dishwasher
- Bills Included: None

Letting Information

- Date Available From: Now
- Minimum Annual Household Income: £60,000
- Guarantor NOT required (subject to referencing)

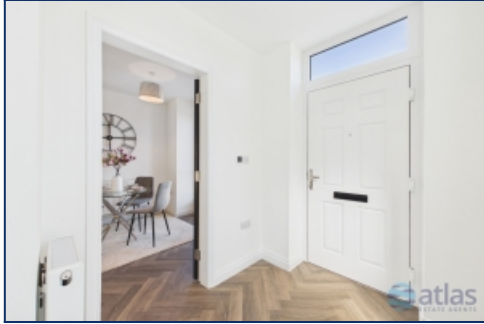
Description

Brought to the market by Atlas Estate Agents, The Dales is a boutique development of nine exceptional new build homes, perfectly positioned off Okell Drive, Halewood, L26. Designed with modern living in mind, each property combines thoughtful design, elegant interiors and energy efficiency.

Arranged over three floors, the accommodation includes a stylish open-plan kitchen and dining area with integrated appliances, two spacious reception rooms, and a convenient downstairs WC with separate utility room. The first floor offers two generous bedrooms and a beautifully finished bathroom, while the top floor hosts the impressive principal suite with walk-in wardrobe and en-suite.

Outside, every home enjoys a private rear garden laid to lawn with an Indian stone patio and fenced boundaries, as well as a block-paved driveway for two cars and shared visitor parking. Finished to a high specification throughout and complete with an air source heat pump for reduced running costs, The Dales offers the perfect blend of contemporary comfort and timeless quality.

Additional Images



Hallway



Kitchen



Kitchen



Reception Room



Reception Room



Downstairs Wc



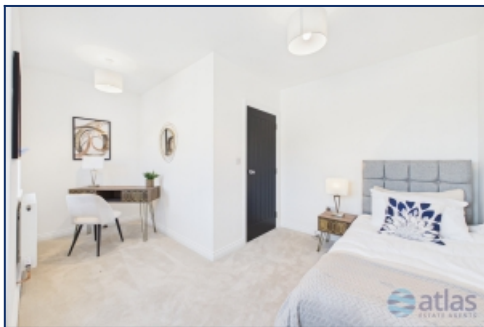
Staircase



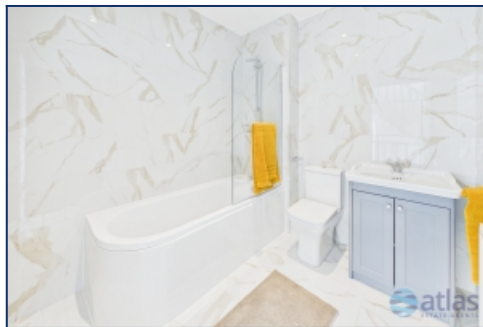
Landing



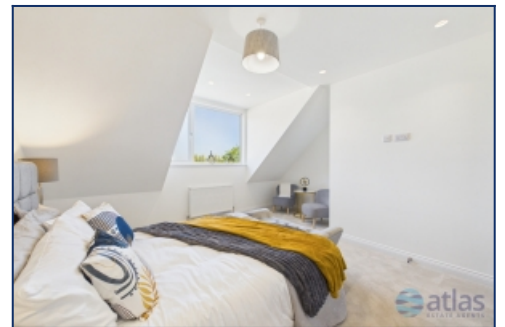
Bedroom One



Bedroom



Bathroom



Master Bedroom



En-suite To Master Bedroom



Site Layout



Garden

Floor Plans



Tel: 0151 727 2469
Fax: 0151 727 4943

Atlas Estate Agents, 2 Allerton Road,
Mossley Hill, Liverpool, L18 1LN

Email: lettings@atlasestateagents.co.uk
Website: www.atlasestateagents.co.uk

These particulars are intended to give a fair and substantially correct overall description for the guidance of intending purchasers/tenants and do not constitute an offer or part of a contract. Please note that any services, heating systems or appliances have not been tested and no warranty can be given or implied as to their working order. Prospective purchasers/tenants ought to seek their own professional advice.

All descriptions, dimensions, areas, references to condition and necessary permissions for use and occupation and other details are given in good faith and are believed to be correct, but any intending purchasers/tenants should not rely on them as statements or representations of fact, but must satisfy themselves by inspection or otherwise as to the correctness of each of them.