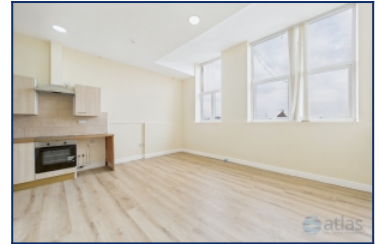
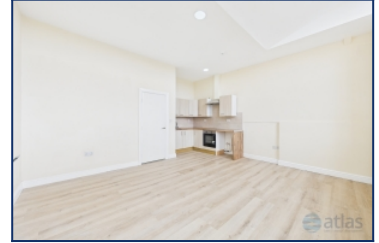


Wellington Street, Garston, L19



To Let - £650 per calendar month

Key Features

- 1 Bedroom 1 Bathroom Apartment
- EPC Rating: D
- Ready for Immediate Occupation
- Spacious Open-Plan Living and Kitchen Area
- Stylish, Modern Fitted Kitchen
- Generously Sized Double Bedroom
- Contemporary Fitted Shower Room
- Allocated Off-Road Parking Space
- Double Glazing and Efficient Electric Heating
- Within Easy Walking Distance of Liverpool South Parkway
- Superb Transport Connections Nearby
- Early Viewing Highly Recommended

Further Details

- Furnishing: Unfurnished
- Floor: 2 (no lift)
- No. of Floors: 1
- Floor Space: 595 square feet / 55 square metres
- Council Tax Band: A
- Local Authority: Liverpool City Council
- Security: Intercom (Audio Only)
- Parking: Allocated
- Heating/Energy: Electric Heating, Double Glazing
- Appliances/White Goods: Electric Cooker, Electric Hob (Ceramic)
- Bills Included: None

Move-in Costs

- Security Deposit: £750.00
- To secure this property you are required to pay a holding deposit equal to one weeks rent, £150.00. The holding deposit will go on to form part of your rent/security deposit. The balance of any rent/security deposit is normally payable the working day before you move in.

Letting Information

- Date Available From: Now
- Minimum Term: 12 months
- Minimum Annual Household Income: £19,500
- Guarantor NOT required (subject to referencing)
- Pets NOT considered
- Smoking NOT permitted

Description

Stylish Second-Floor Apartment in the Heart of Garston – Ready to Move Into

Atlas Estate Agents are delighted to present this well-appointed one-bedroom apartment to let, ideally situated on Wellington Street in the popular residential area of Garston, L19.

Positioned on the second floor and thoughtfully arranged over one level, this property offers a smart, contemporary living space ideal for professionals,

couples or anyone seeking convenience and comfort in equal measure.

Step inside to discover a spacious open-plan living and kitchen area, flooded with natural light and finished to a high standard. The modern fitted kitchen features sleek cabinetry and ample workspace—perfect for everything from quick weekday meals to entertaining guests.

The generously sized double bedroom provides a calm and comfortable retreat, while the contemporary shower room adds a touch of luxury with its clean, stylish fittings.

Additional features include double glazing, efficient electric heating, and the added benefit of an allocated off-road parking space—a rare and welcome bonus in this bustling part of town.

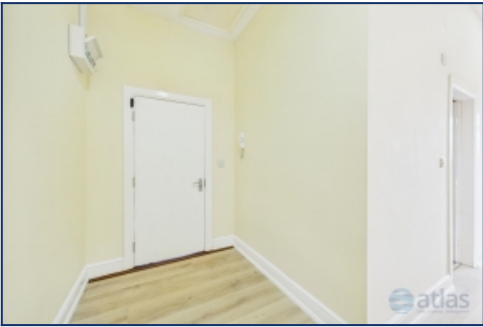
Located just a short stroll from Liverpool South Parkway, this apartment is perfectly placed for commuters, with excellent transport links across the city and beyond. With local shops, green spaces and amenities all close at hand, you'll have everything you need right on your doorstep.

Offered unfurnished and ready for immediate occupation, early viewing is highly recommended to appreciate all this superb apartment has to offer.

Additional Images



Kitchen



Hallway



Bedroom



Bedroom

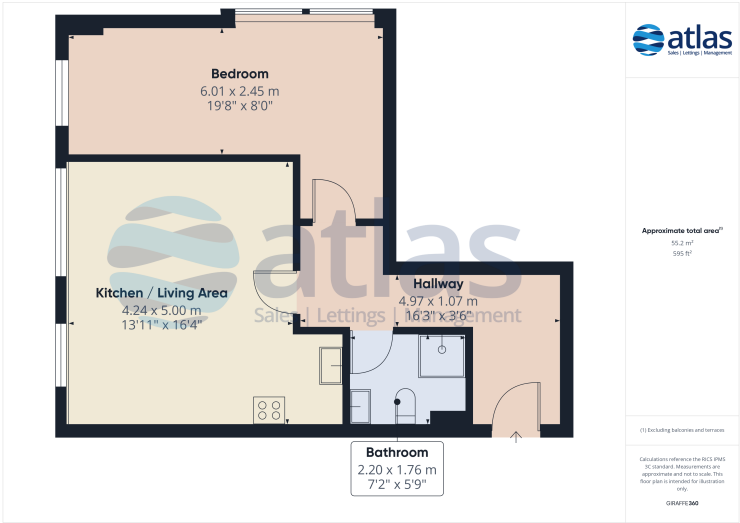


Bathroom



Bathroom

Floor Plans



Tel: 0151 727 2469
Fax: 0151 727 4943

Atlas Estate Agents, 2 Allerton Road,
Mossley Hill, Liverpool, L18 1LN

Email: lettings@atlasestateagents.co.uk
Website: www.atlasestateagents.co.uk

These particulars are intended to give a fair and substantially correct overall description for the guidance of intending purchasers/tenants and do not constitute an offer or part of a contract. Please note that any services, heating systems or appliances have not been tested and no warranty can be given or implied as to their working order. Prospective purchasers/tenants ought to seek their own professional advice.

All descriptions, dimensions, areas, references to condition and necessary permissions for use and occupation and other details are given in good faith and are believed to be correct, but any intending purchasers/tenants should not rely on them as statements or representations of fact, but must satisfy themselves by inspection or otherwise as to the correctness of each of them.