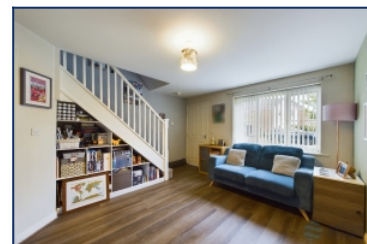


Kinsale Drive, Allerton, L19



To Let - £1,000 per calendar month

Key Features

- 3 Bedroom 1 Bathroom Mews House
- EPC Rating: C
- Wonderful Family Home with Conservatory in Highly Sought After Area L19 Allerton
- Tasteful and Attractive Decor Throughout
- Kitchen/Dining Area Opens Onto Gorgeous Conservatory
- Wonderful, Striking Fully Tiled Bathroom
- Good Sized Yard and Front Driveway
- Three Well-Appointed Bedrooms
- Good Use of Space - Inbuilt Under Stairs Storage Units
- Excellent Transport Links - 3 Minute Drive to Liverpool South Parkway - 5 Minutes to Wealth of Amenities on Allerton Road
- Close to Good Schools - 8 Minute Drive to Calderstones Park
- Modern Kitchen

Move-in Costs

- Security Deposit: £1,153.84
- To secure this property you are required to pay a holding deposit equal to one weeks rent, £230.77. The holding deposit will go on to form part of your rent/security deposit. The balance of any rent/security deposit is normally payable the working day before you move in.

Description

Introducing a remarkable mews house exclusively brought to the market by Atlas Estate Agents. Nestled in the desirable neighborhood of Kinsale Drive, Allerton, L19, this stunning property is now available to let. Boasting an array of impressive features, this furnished residence spans 75 square meters and offers a truly delightful living experience.

Further Details

- Furnishing: Furnished
- No. of Floors: 2
- Floor Space: 75 square metres / 807 square feet
- Council Tax Band: B
- Local Authority: Liverpool City Council
- Parking: Off Street, Driveway
- Outside Space: Back Garden
- Heating/Energy: Gas Central Heating, Double Glazing
- Appliances/White Goods: Electric Oven, Gas Hob
- Bills Included: None

Letting Information

- Date Available From: Now
- Minimum Term: 12 months
- Minimum Annual Household Income: £30,000
- Guarantor NOT required (subject to referencing)
- Pets NOT considered
- Smoking NOT permitted

As you step inside, you will be captivated by the tasteful and attractive décor that flows throughout every corner of this wonderful family home. The accommodation is thoughtfully arranged over two floors, providing a sense of space and privacy. On the ground floor, you will find two inviting reception rooms, perfect for entertaining guests or simply unwinding after a long day.

The heart of this home lies in its modern kitchen, where culinary delights await. The kitchen seamlessly blends with the dining area, creating a seamless flow that leads to a gorgeous conservatory. This sunlit sanctuary is the ideal spot to relax with a morning coffee or indulge in a leisurely brunch, surrounded by the beauty of the outdoors.

One of the standout features of this property is its striking fully tiled bathroom. Meticulously designed, this luxurious space offers a tranquil haven where you can pamper yourself and unwind in style. Whether it's a refreshing shower or a long soak in the tub, this bathroom is sure to exceed your expectations.

Step outside and discover the good-sized yard, perfect for enjoying outdoor activities or hosting summer barbecues. The front driveway provides convenient off-street parking, ensuring your vehicles are safe and easily accessible.

The three well-appointed bedrooms offer comfortable and peaceful retreats. With ample space and natural light, these rooms are versatile and can be adapted to suit your individual needs. Additionally, the property features inbuilt under stairs storage units, maximizing the efficient use of space and providing practical solutions for your storage needs.

Situated in a highly sought-after area, L19 Allerton, this home benefits from excellent transport links. A short 3-minute drive takes you to Liverpool South Parkway, opening up a world of possibilities for commuting or exploring the vibrant city. Additionally, you'll find a wealth of amenities on Allerton Road within a convenient 5-minute drive.

For families, this location is a dream. Good schools are in close proximity, including the highly regarded Calderstones Park, just an 8-minute drive away. Enjoy tranquil strolls, picnics, and quality time with loved ones in this picturesque park.

Don't miss the opportunity to make this exceptional mews house your home. Immerse yourself in the modern kitchen, delightful conservatory, and stunning bathroom, all while enjoying the convenience of the location and the comfortable living spaces. Contact Atlas Estate Agents today to arrange a viewing and experience the true beauty of this remarkable property firsthand.

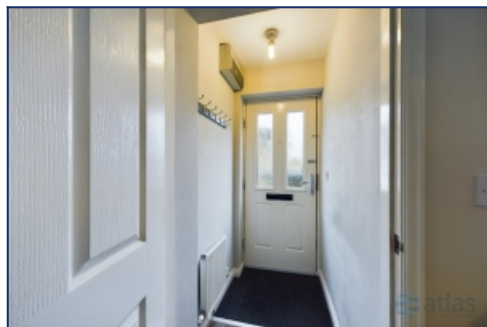
Additional Images



Kitchen



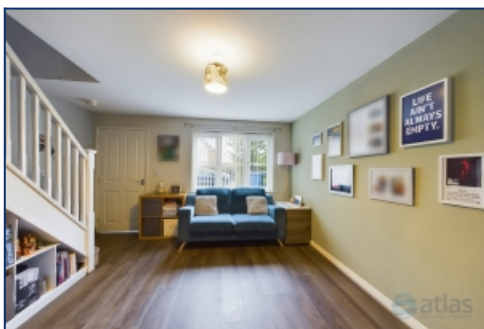
Garden



Entrance



Dining Room/Kitchen



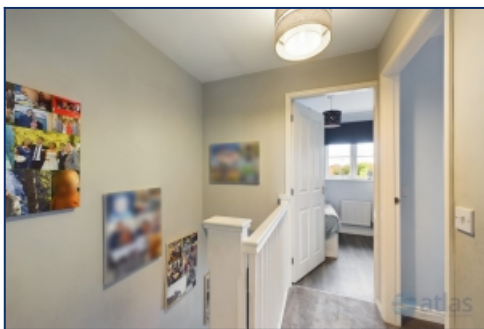
Living Room



Living Room



Dining Area/Conservatory



Landing



Bedroom



Bedroom



Bedroom



Bedroom



Bathroom



Bathroom



Front



Garden

Floor Plans

