

Acanthus Road, Old Swan, L13



For Sale - £170,000 Offers in Excess of

Key Features

- 3 Bedroom 1 Bathroom Terraced House
- EPC Rating: C
- Well Presented & Ready to Move Into
- Spacious & Bright Front Reception Room
- Open Plan Kitchen/Dining Room
- Contemporary Tiled Kitchen
- Three Bedrooms
- Attractive Modern Family Bathroom with Bath and Shower
- Private Gated Courtyard
- Local Green Space - 1 Minute Walk to Doric Park and Children's Play Area
- Close to a Wealth of Amenities, Popular Schools and Good Public Transport Links
- Situated in the Popular Old Swan, L13 Area

Further Details

- Tenure: Freehold
- No. of Floors: 2
- Floor Space: 89 square metres / 957 square feet
- Council Tax Band: A
- Local Authority: Liverpool City Council
- Parking: On Street
- Outside Space: Back Yard
- Heating/Energy: Gas Central Heating, Double Glazing
- Appliances/White Goods: Dishwasher

Description

Step into a world of modern comfort and timeless charm with this inviting terraced house, proudly presented to you by Atlas Estate Agents. Nestled within the vibrant community of Old Swan, L13, on the coveted Acanthus Road, this property offers a perfect blend of convenience and serenity.

As you step through the door, you are greeted by a sense of warmth and welcome, with accommodation spread gracefully across two floors. The ground floor boasts two reception rooms, each offering its own unique ambiance. The spacious and luminous front reception room is perfect for entertaining guests or simply unwinding after a long day.

The heart of the home lies in the open-plan kitchen/dining room, where culinary delights are prepared amidst a backdrop of contemporary elegance. Adorned with sleek tiled finishes, the kitchen exudes modern sophistication, inviting you to create culinary masterpieces with ease.

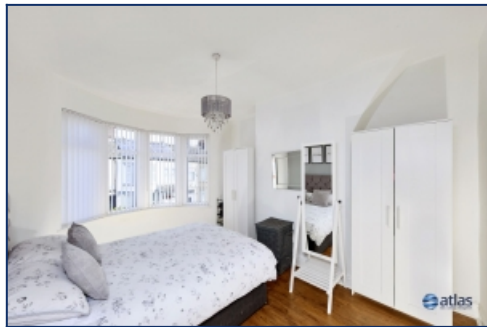
Ascend the staircase to discover three generously sized bedrooms, each offering a peaceful retreat for rest and relaxation. The attractive modern family bathroom awaits, boasting both a luxurious bath and a rejuvenating shower, promising indulgent moments of tranquility.

Step outside into your own private gated courtyard, a secluded oasis where alfresco dining and tranquil moments await. Beyond your doorstep lies the lush green expanse of Doric Park, just a minute's walk away, offering a serene escape amidst nature's embrace.

Convenience is at your fingertips, with an array of amenities, popular schools, and excellent public transport links close by. Whether it's a leisurely stroll through the park or a quick trip to the local shops, everything you need is within easy reach.

Don't miss this opportunity to make this exquisite property your own, where modern living meets timeless elegance in the heart of Old Swan. Arrange your viewing today and embark on a journey to your dream home.

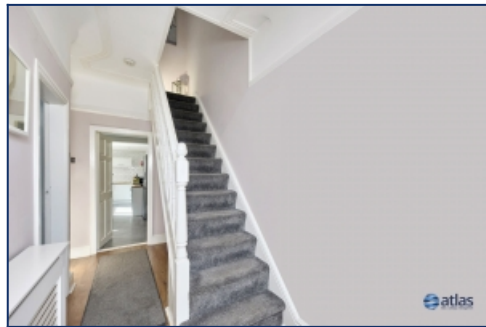
Additional Images



Bedroom 1



Bedroom 2



Stairs



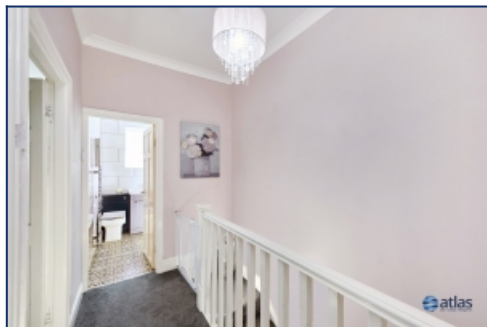
Back Reception Room



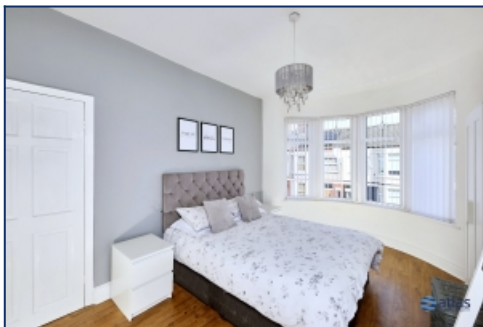
Back Reception Room



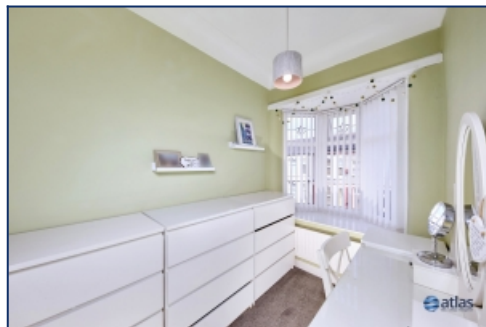
Kitchen



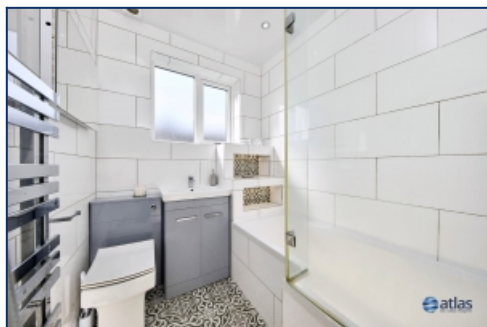
Landing



Bedroom 1



Bedroom 3



Bathroom



Courtyard



Courtyard

Floor Plans



Tel: 0151 727 2469
Fax: 0151 727 4943

Atlas Estate Agents, 2 Allerton Road,
Mossley Hill, Liverpool, L18 1LN

Email: sales@atlasestateagents.co.uk
Website: www.atlasestateagents.co.uk

These particulars are intended to give a fair and substantially correct overall description for the guidance of intending purchasers/tenants and do not constitute an offer or part of a contract. Please note that any services, heating systems or appliances have not been tested and no warranty can be given or implied as to their working order. Prospective purchasers/tenants ought to seek their own professional advice.

All descriptions, dimensions, areas, references to condition and necessary permissions for use and occupation and other details are given in good faith and are believed to be correct, but any intending purchasers/tenants should not rely on them as statements or representations of fact, but must satisfy themselves by inspection or otherwise as to the correctness of each of them.