

## Fulwood Road, Aigburth, L17



**For Sale - £229,950**

### Key Features

- 3 Bedroom 1 Bathroom Terraced House
- EPC Rating: D56
- Very Well Presented Throughout
- Bright & Spacious Rooms
- Minutes from Aigburth Road, Lark Lane & Sefton Park
- Served by Excellent Transport Links
- Many Original Period Features
- Large Rear Yard with Gated Access
- Local Shops and Amenities
- Quality Local Schools
- Double Glazing & Gas Central Heating
- Early Viewing Advised!

### Further Details

- Tenure: Freehold
- No. of Floors: 2
- Floor Space: 1,256 square feet / 117 square metres
- Council Tax Band: A
- Local Authority: Liverpool City Council
- Parking: On Street
- Outside Space: Back Yard
- Heating/Energy: Gas Central Heating, Double Glazing
- Appliances/White Goods: Electric Oven, Gas Hob

### Description

A BEAUTIFUL AND SPACIOUS 3 BEDROOM TERRACED HOUSE BENEFITING FROM AN ABUNDANCE OF ORIGINAL CHARACTER FEATURES

Situated in Aigburth, a popular and affluent south Liverpool suburb and home to many well-known landmarks including Sefton Park, Sudley House, Otterspool Promenade, Aigburth Cricket Club and Lark Lane. Sefton Park is listed by English Heritage and covers a remarkable 235 acres. Lark Lane is a stones-throw from Sefton Park and is renowned for its bohemian chic atmosphere and features a diverse selection of wine bars, restaurants, coffee shops and independent businesses. Aigburth is also home to the 'outstanding' rated Sudley Junior School, Auckland College and St Margaret's Academy, and offers excellent road, rail and bus links to Liverpool city centre.

The property briefly comprises of; entrance hallway, living room and dining room opened up to the kitchen. To the first floor are two double bedrooms, a single bedroom and a large family bathroom. Externally, there is a large back yard with gated access and on street car parking.

The property also benefits from double glazing, gas central heating and many original period features throughout.

This opportunity will not be on the market for long so contact us today to arrange your viewing!

### Additional Images





Bathroom



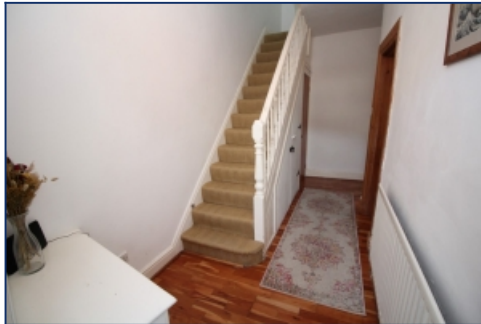
Living Room



Bedroom One



Bathroom



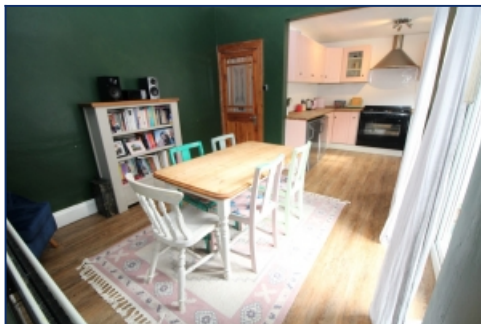
Hallway



Living Room



Living Room



Dining Room



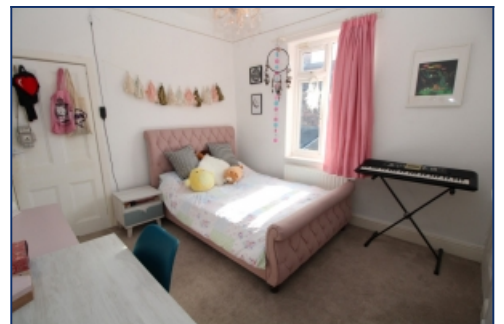
Kitchen



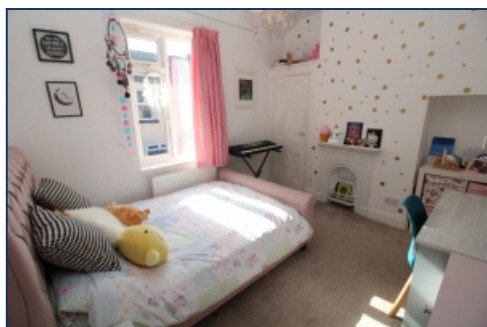
Landing



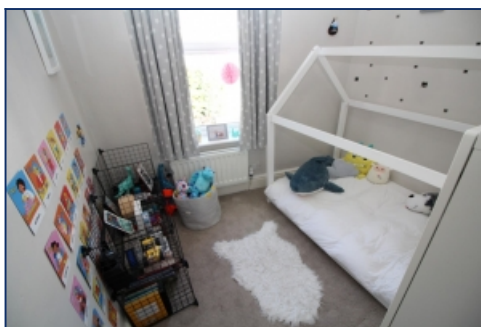
Bedroom One



Bedroom Two



Bedroom Two



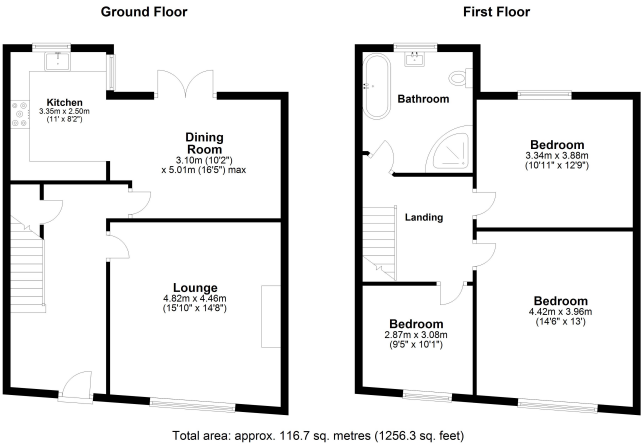
Bedroom Three



Bathroom



Floor Plans



Tel: 0151 727 2469  
Fax: 0151 727 4943

Atlas Estate Agents, 2 Allerton Road,  
Mossley Hill, Liverpool, L18 1LN

Email: [sales@atlasestateagents.co.uk](mailto:sales@atlasestateagents.co.uk)  
Website: [www.atlasestateagents.co.uk](http://www.atlasestateagents.co.uk)

These particulars are intended to give a fair and substantially correct overall description for the guidance of intending purchasers/tenants and do not constitute an offer or part of a contract. Please note that any services, heating systems or appliances have not been tested and no warranty can be given or implied as to their working order. Prospective purchasers/tenants ought to seek their own professional advice.

All descriptions, dimensions, areas, references to condition and necessary permissions for use and occupation and other details are given in good faith and are believed to be correct, but any intending purchasers/tenants should not rely on them as statements or representations of fact, but must satisfy themselves by inspection or otherwise as to the correctness of each of them.