

Victoria Terrace, Wavertree, L15



For Sale - £400,000 Offers Over

Key Features

- 4 Bedroom 1 Bathroom End of Terrace House
- EPC Rating: D
- High Specification Throughout Entire Property
- Ground Floor Benefits from Piped Underfloor Heating
- Four Large Bedrooms and Three Reception Rooms
- Modern Open Plan Kitchen/Dining Room with Skylights
- Modern Bathroom with Freestanding Bath and Separate Walk-in Shower Enclosure
- Marble Rear Courtyard with Gated Access
- Original Character Features & High Finish Throughout
- Separate Utility Room
- Amongst Excellent Amenities, 4 Minute Walk to Allerton Road and 5 Minutes to Penny Lane
- Previously Let as a HMO

Description

Welcome to Victoria Terrace, Wavertree where sophistication meets investment potential in this exceptional end-of-terrace residence, now available through Atlas Estate Agents.

Previously utilized as a House in Multiple Occupation (HMO), this property presents a lucrative investment opportunity. With its high specification throughout and ample space, it's perfectly suited for accommodating multiple tenants, providing a steady rental income stream.

The ground floor boasts piped underfloor heating, ensuring comfort and allure, while four large bedrooms and three reception rooms offer versatility and space for tenants. The modern open-plan kitchen/dining room, adorned with skylights, creates a welcoming ambiance for communal living.

Indulge in the luxurious features of the modern bathroom, complete with a freestanding bath and separate walk-in shower enclosure. Outside, a marble rear courtyard with gated access adds an element of exclusivity to the property.

Original character features combined with high-quality finishes showcase the timeless charm of this residence. The separate utility room enhances functionality, catering to the needs of tenants with ease.

Convenience is paramount, with excellent amenities just a stone's throw away. Allerton Road and Penny Lane, with their array of shops and eateries, are

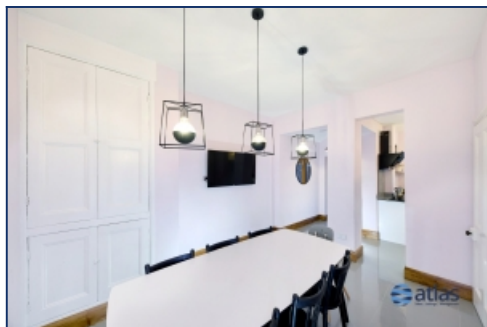
Further Details

- Tenure: Freehold
- No. of Floors: 2
- Floor Space: 119 square metres / 1,284 square feet
- Council Tax Band: A
- Local Authority: Liverpool City Council
- Parking: On Street
- Outside Space: Back Yard
- Heating/Energy: Gas Central Heating, Double Glazing
- Appliances/White Goods: Electric Oven (Double), Electric Hob (Induction)

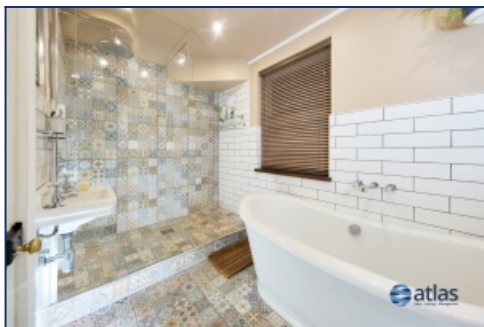
within a short walking distance. For outdoor enthusiasts, Wavertree Sports Park Playground and local green spaces offer opportunities for recreation and relaxation.

Don't miss out! contact Atlas Estate Agents today to arrange a viewing and secure your foothold in the lucrative property market of Victoria Terrace, Wavertree.

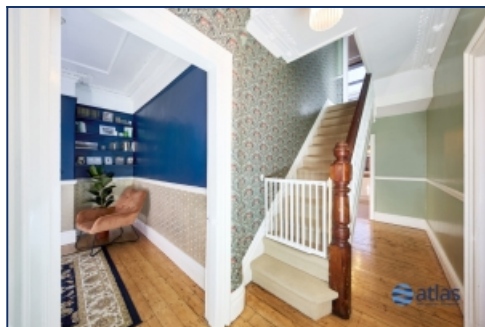
Additional Images



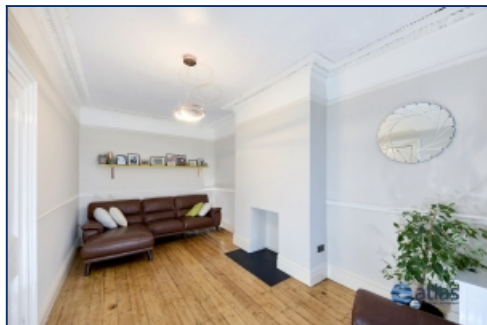
Dining Area



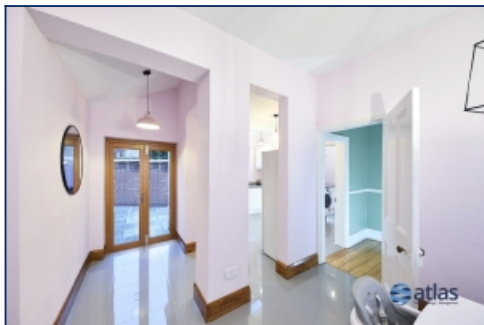
Bathroom



Stairs



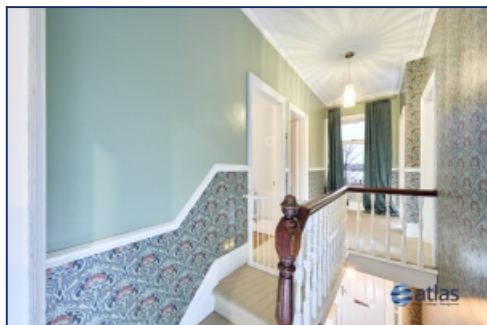
Front Living Room 2



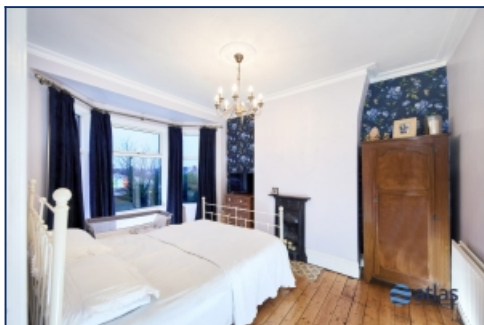
Dining/Kitchen



Kitchen



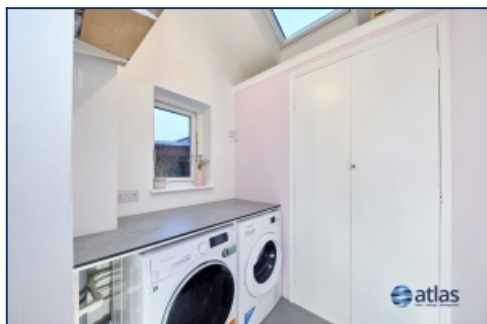
Landing



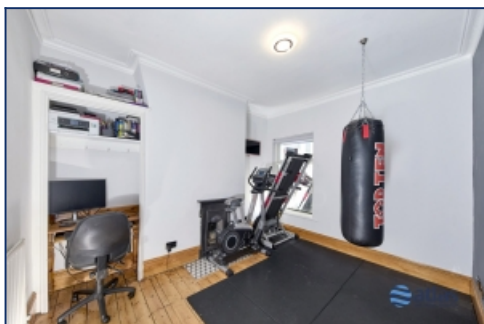
Bedroom 1



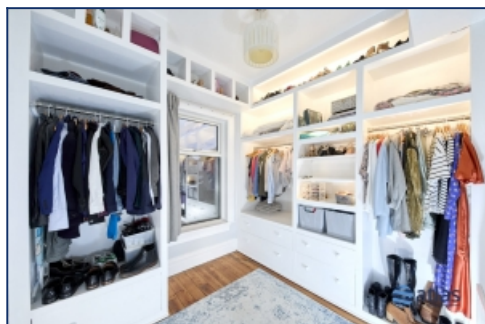
Bedroom 2



Bedroom 3



Bedroom 4



Rear



Yard



Yard

Floor Plans

