

## Rockbourne Avenue, Woolton, L25



**For Sale - £410,000 Offers Over**

### Key Features

- 3 Bedroom 1 Bathroom Detached House
- EPC Rating: E
- Spacious Detached House in a Highly Sought After Area of Woolton
- Generously Sized Plot
- Two Driveways
- Well Manicured Front & Rear Gardens
- Family Bathroom
- Garage
- Conservatory
- Spacious Reception Room
- Three Well Proportioned Bedrooms

### Further Details

- Tenure: Freehold
- No. of Floors: 2
- Floor Space: 85 square metres / 915 square feet
- Council Tax Band: E
- Local Authority: Liverpool City Council
- Parking: Off Street, Driveway
- Outside Space: Front Garden, Back Garden
- Heating/Energy: Gas Central Heating, Double Glazing

### Description

Fantastic three bedroom detached house situated in Woolton, a popular and affluent south Liverpool suburb and home to many well-known landmarks including Strawberry Fields (made famous by the Beatles!), Allerton Road, Reynolds Park and Woolton Golf Club. Allerton Road is a well established and fashionable high street offering a diverse selection of wine bars, restaurants, coffee shops and independent businesses. Woolton is also home to outstanding schools and offers excellent road, rail and bus links to Liverpool city centre and beyond. In brief the property comprises of a welcoming hallway, living room, and conservatory which gives access to a good size well manicured rear garden. To the first floor you are welcomed by the kitchen, bathroom and three well proportioned bedrooms. The property also benefits from double glazing, gas central heating and many original period features.

### Additional Images





Kitchen



Conservatory



Bedroom 1



Kitchen



Living Area



Bedroom 1



Living Area



Bathroom



Entrance Porch



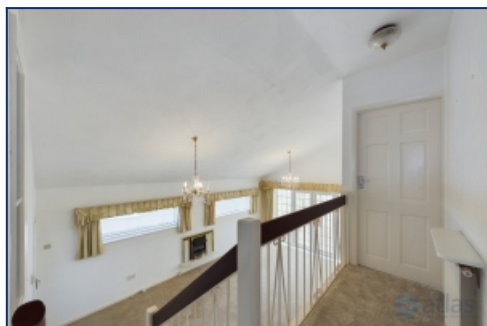
Kitchen



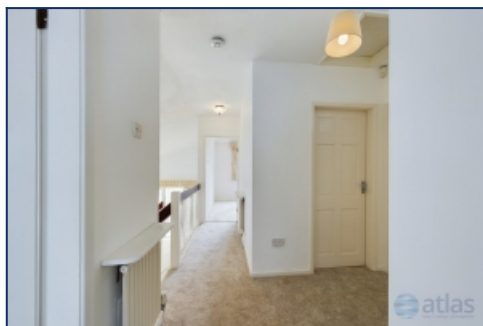
Conservatory



Conservatory



Hall/Stairs



Landing



Bedroom 1



Hallway



Bedroom 2



Bedroom 2

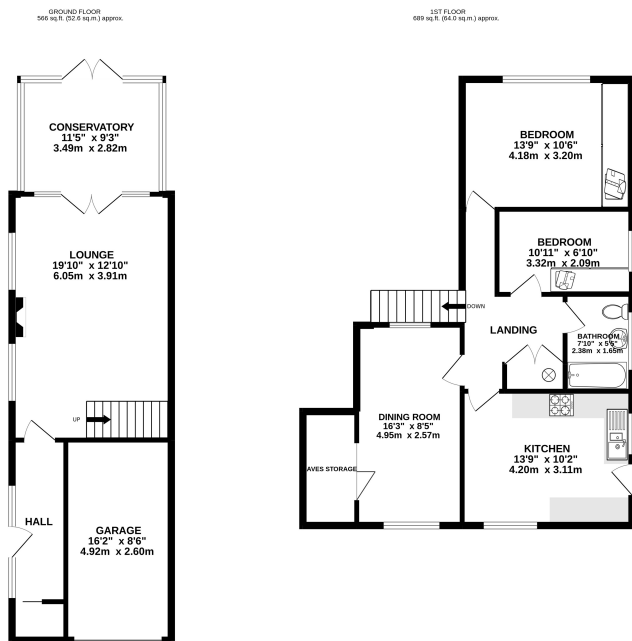


Bedroom 3



Bedroom 3

## Floor Plans



Tel: 0151 727 2469  
Fax: 0151 727 4943

Atlas Estate Agents, 2 Allerton Road,  
Mossley Hill, Liverpool, L18 1LN

Email: [sales@atlasestateagents.co.uk](mailto:sales@atlasestateagents.co.uk)  
Website: [www.atlasestateagents.co.uk](http://www.atlasestateagents.co.uk)

These particulars are intended to give a fair and substantially correct overall description for the guidance of intending purchasers/tenants and do not constitute an offer or part of a contract. Please note that any services, heating systems or appliances have not been tested and no warranty can be given or implied as to their working order. Prospective purchasers/tenants ought to seek their own professional advice.

All descriptions, dimensions, areas, references to condition and necessary permissions for use and occupation and other details are given in good faith and are believed to be correct, but any intending purchasers/tenants should not rely on them as statements or representations of fact, but must satisfy themselves by inspection or otherwise as to the correctness of each of them.