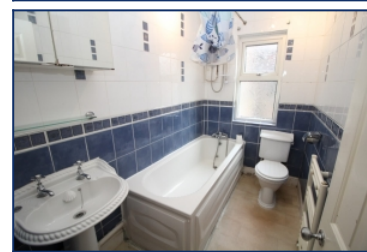


Maiden Lane, Clubmoor, L13



For Sale - £100,000 Offers in Excess of

Key Features

- 3 Bedroom 1 Bathroom Terraced House
- EPC Rating: D60
- No Chain - Ready to Buy!
- Local Shops and Amenities
- Double Glazing & Gas Central Heating
- Popular Residential Area
- Many Original Period Features
- Rear Yard with Gated Access
- Two Reception Rooms (Knocked Through)
- Served by Good Transport Links
- Ample On Street Car Parking
- Early Viewing Advised

Further Details

- Tenure: Freehold
- No. of Floors: 2
- Council Tax Band: A
- Local Authority: Liverpool City Council
- Parking: On Street
- Outside Space: Back Yard
- Heating/Energy: Gas Central Heating, Double Glazing
- Appliances/White Goods: Electric Oven, Gas Hob

Description

A THREE BEDROOM MID TERRACED PROPERTY BENEFITING FROM NO ONWARD CHAIN.

The accommodation briefly comprises of; entrance hallway, front living room, dining room and a kitchen. To the first floor are two double bedrooms, a single bedroom and a family bathroom. Externally there is a rear yard with gated access and on street car parking.

The property also benefits from double glazing and gas central heating.

This opportunity will not be on the market for long so contact us today to arrange your viewing!

Room Details

Living Room

4.25 x 3.64 metres (14' 0" x 12' 0")

Bay window to the front aspect, laminate flooring, feature fireplace and radiator.

Dining Room

3.72 x 3.64 metres (12' 3" x 12' 0")

laminated flooring, radiator and UPVC door to the rear aspect.

Kitchen

3.47 x 4.40 metres (11' 5" x 14' 6")

Range of wall and base units, laminate worktops, gas hob and oven, extractor hood, tiled splashback, stainless sink with mixer tap, boiler, two windows and wooden stable door providing access to the rear.

Bedroom One

4.22 x 5.45 metres (13' 11" x 17' 11")

Laminated flooring, two windows to the front aspect, feature fireplace and radiator.

Bedroom Two

3.74 x 3.62 metres (12' 4" x 11' 11")

Window to the rear aspect, built in storage, fireplace, radiator and laminated flooring.

Bedroom Three

2.78 x 3.03 metres (9' 2" x 10' 0")

Built in wardrobes, window to the rear, radiator and laminated flooring.

Bathroom

1.46 x 2.48 metres (4' 10" x 8' 2")

Fully tiled walls, laminated flooring, pedestal hand wash basin, W.C, shower over bath, frosted window to the side aspect and radiator.

Additional Images

Bedroom Two



Bedroom One



Hall



Dining Room



Kitchen



Bedroom One



Bedroom Three

Tel: 0151 727 2469
Fax: 0151 727 4943

Atlas Estate Agents, 2 Allerton Road,
Mossley Hill, Liverpool, L18 1LN

Email: sales@atlasestateagents.co.uk
Website: www.atlasestateagents.co.uk

These particulars are intended to give a fair and substantially correct overall description for the guidance of intending purchasers/tenants and do not constitute an offer or part of a contract. Please note that any services, heating systems or appliances have not been tested and no warranty can be given or implied as to their working order. Prospective purchasers/tenants ought to seek their own professional advice.

All descriptions, dimensions, areas, references to condition and necessary permissions for use and occupation and other details are given in good faith and are believed to be correct, but any intending purchasers/tenants should not rely on them as statements or representations of fact, but must satisfy themselves by inspection or otherwise as to the correctness of each of them.