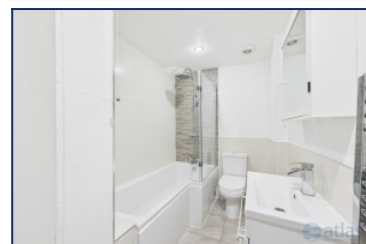


## Princes Road, Princes Park, L8



To Let - £850 per calendar month

### Key Features

- 2 Bedroom 1 Bathroom Apartment
- EPC Rating: C69
- Very Well Presented Throughout
- Quick, Easy & Direct Access to City Centre
- Served by Excellent Transport Links
- New Modern Bathroom
- Minutes from Princes & Sefton Park
- Two Double Bedrooms
- Local Shops and Amenities
- Gas Central Heating
- Available Now
- Early Viewing Advised!

### Further Details

- Furnishing: Unfurnished
- Floor: 2 (no lift)
- No. of Floors: 1
- Floor Space: 644 square feet / 60 square metres
- Council Tax Band: A
- Local Authority: Liverpool City Council
- Security: Intercom (Audio Only)
- Parking: On Street
- Heating/Energy: Gas Central Heating, Double Glazing
- Appliances/White Goods: Fridge/Freezer, Washing Machine
- Bills Included: None

### Move-in Costs

- Security Deposit: £980.76
- To secure this property you are required to pay a holding deposit equal to one weeks rent, £196.15. The holding deposit will go on to form part of your rent/security deposit. The balance of any rent/security deposit is normally payable the working day before you move in.

### Letting Information

- Date Available From: Now
- Minimum Term: 12 months
- Minimum Annual Household Income: £25,500
- Guarantor NOT required (subject to referencing)
- Pets NOT considered
- Smoking NOT permitted

### Description

A WELL PRESENTED 2 BEDROOM APARTMENT SITUATED JUST MINUTES FROM PRINCES PARK AND LARK LANE AND BENEFITING FROM EXCELLENT TRANSPORT LINKS

The accommodation briefly comprises of; entrance hallway, open plan living room, kitchen with dining area, two double bedrooms and a family bathroom.

This opportunity will not be on the market for long so contact us today to arrange your viewing!

## Additional Images



Lounge



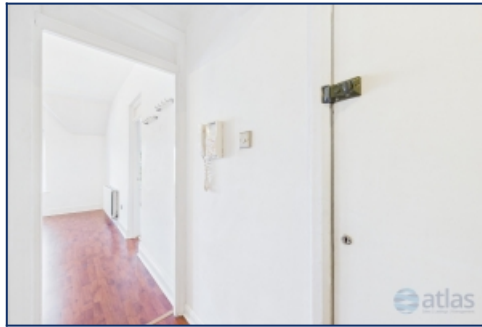
Entrance



Lounge



Kitchen



Hallway



Bedroom



Bedroom

## Floor Plans



Tel: 0151 727 2469  
Fax: 0151 727 4943

Atlas Estate Agents, 2 Allerton Road,  
Mossley Hill, Liverpool, L18 1LN

Email: [lettings@atlasestateagents.co.uk](mailto:lettings@atlasestateagents.co.uk)  
Website: [www.atlasestateagents.co.uk](http://www.atlasestateagents.co.uk)

These particulars are intended to give a fair and substantially correct overall description for the guidance of intending purchasers/tenants and do not constitute an offer or part of a contract. Please note that any services, heating systems or appliances have not been tested and no warranty can be given or implied as to their working order. Prospective purchasers/tenants ought to seek their own professional advice.

All descriptions, dimensions, areas, references to condition and necessary permissions for use and occupation and other details are given in good faith and are believed to be correct, but any intending purchasers/tenants should not rely on them as statements or representations of fact, but must satisfy themselves by inspection or otherwise as to the correctness of each of them.