

## Burman Road, Garston, L19



## For Sale - £210,000 Offers Over

### Key Features

- 3 Bedroom 1 Bathroom Semi-Detached House
- EPC Rating: E54
- No Onward Chain!
- Three Bedroom Semi-Detached Property
- Spacious Fitted Kitchen/Diner
- Living Room
- Downstairs WC
- Outbuilding In Rear Garden
- Front & Rear Gardens
- Off Road Parking
- Bright & Spacious Rooms
- Popular Residential Area

### Further Details

- Tenure: Freehold
- No. of Floors: 2
- Floor Space: 74 square feet / 7 square metres
- Council Tax Band: B
- Local Authority: Liverpool City Council
- Parking: Off Street, Driveway
- Outside Space: Back Garden
- Heating/Energy: Gas Central Heating, Double Glazing
- Appliances/White Goods: Electric Oven, Gas Hob

### Description

A lovely and spacious three bedroom semi detached house benefiting from front and rear gardens and off street car parking. Benefitting also from no onward chain.

Located in a popular residential area in South Liverpool, L19.

The property comprises of; entrance hallway, living room, kitchen/diner and WC, all to the ground floor. To the first floor are two double bedrooms, a single bedroom and a family bathroom. Externally, there is a off road parking along with front and rear gardens and a outbuilding in the rear garden with potential to convert.

Viewing highly recommended.

### Additional Images



Family Bathroom



Back Garden



Outbuilding



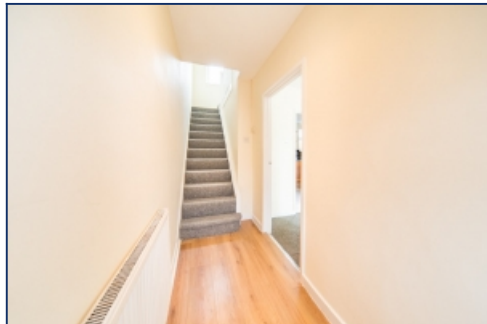
Kitchen



Front Living Room



Downstairs W/C



Hall



Bedroom



Bedroom



Bedroom



Bedroom

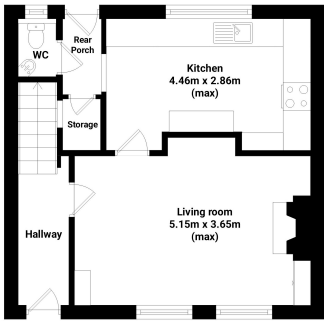


Back Garden

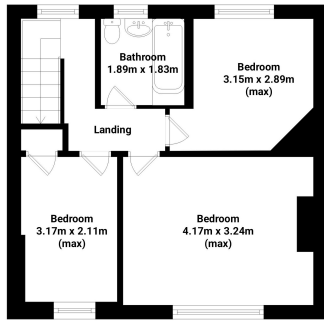


Back Garden

## Floor Plans



Ground floor  
Area: 37.2 m<sup>2</sup>



First floor  
Area: 36.65 m<sup>2</sup>

Tel: 0151 727 2469  
Fax: 0151 727 4943

Atlas Estate Agents, 2 Allerton Road,  
Mossley Hill, Liverpool, L18 1LN

Email: [sales@atlasestateagents.co.uk](mailto:sales@atlasestateagents.co.uk)  
Website: [www.atlasestateagents.co.uk](http://www.atlasestateagents.co.uk)

These particulars are intended to give a fair and substantially correct overall description for the guidance of intending purchasers/tenants and do not constitute an offer or part of a contract. Please note that any services, heating systems or appliances have not been tested and no warranty can be given or implied as to their working order. Prospective purchasers/tenants ought to seek their own professional advice.

All descriptions, dimensions, areas, references to condition and necessary permissions for use and occupation and other details are given in good faith and are believed to be correct, but any intending purchasers/tenants should not rely on them as statements or representations of fact, but must satisfy themselves by inspection or otherwise as to the correctness of each of them.