

## Stalbridge Avenue, Mossley Hill, L18



**To Let - £390 to £433 per calendar month**

### Key Features

- 5 Bedroom 6 Bathroom House Share
- EPC Rating: D61
- Clean & Modern Accommodation
- 5x Bedrooms, 5x En-suites, 1x Communal Bathroom
- All Bills Included inc. Internet & TV
- Large Room Sizes
- Prestigious South Liverpool Location
- Served by Excellent Transport Links
- Professionally Managed with Fortnightly Cleaning
- Post Graduates/Working Only
- Minutes from Greenbank Park, Penny Lane & Allerton Road
- On Street Car Parking

### Move-in Costs

- Security Deposit: £100.00 (may vary by room)
- To secure this property you are required to pay a holding deposit equal to one weeks rent (may vary by room). The holding deposit will go on to form part of your rent/security deposit. The balance of any rent/security deposit is normally payable the working day before you move in.

### Description

A RECENTLY REFURBISHED 5 BEDROOM TERRACED COMPROMISING OF 5X DOUBLE EN-SUITE BEDROOMS

#### Key Features

- Contemporary grey fitted kitchen featuring all necessary appliances
- Bright and spacious communal living area featuring comfy sofas and a TV
- 5x large double bedrooms featuring a fitted wardrobe, chest of drawers/bedside cabinet, desk, chair and a double bed
- 5x en-suites to every bedroom featuring a shower enclosure, wash basin and W/C
- Every room is large, bright and airy

### Further Details

- Furnishing: Furnished
- No. of Floors: 2
- Local Authority: Liverpool City Council
- Security: Burglar Alarm
- Parking: On Street
- Outside Space: Back Yard
- Heating/Energy: Gas Central Heating, Double Glazing
- Appliances/White Goods: Electric Oven, Electric Hob (Ceramic), Microwave, Fridge/Freezer, Washing Machine, Toaster, Kettle
- Bills Included: Gas, Electricity, Water, Council Tax, Internet, TV Licence

### Letting Information

- Date Available From: Room #1 from now at £100 pw, Room #4 from now at £90 pw, Room #5 from now at £100 pw
- Minimum Term: 6 months
- Minimum Annual Household Income: £13,000
- Guarantor NOT required (subject to referencing)
- Pets NOT considered
- Smoking NOT permitted

- Good size enclosed back yard
- Safe and secure property
- Ample free on street car parking
- Gas central heating and UPVC double glazing
- Minimum term 6 months, short and long term tenants welcome
- All bills included (gas, electricity, water, internet, TV licence and council tax)
- Professionally managed let by an ARLA registered agent
- Minutes from Greenbank Park, Allerton Road and Penny Lane
- Easy and direct access to Liverpool city centre and the motorway networks
- Communal cleaning once a fortnight

This opportunity will not be on the market for long so contact us today to arrange your viewing!

## Additional Images



En Suite



Living Room



Kitchen



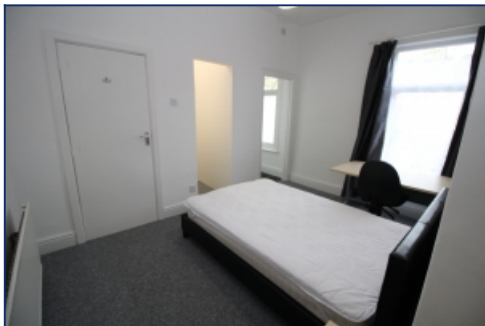
Bedroom Two



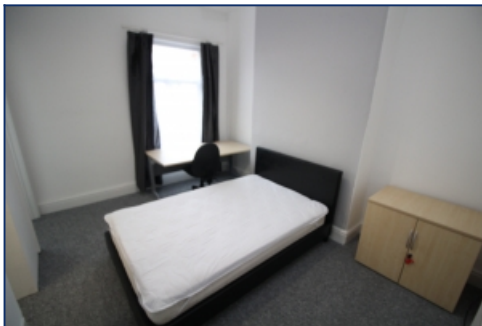
Bedroom Two



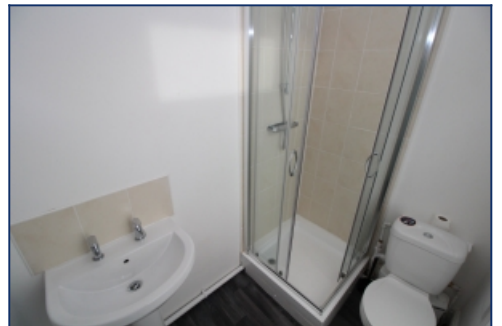
En Suite



Bedroom Three



Bedroom Three



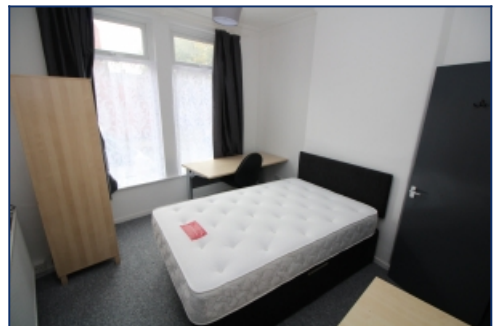
En Suite



Bedroom Four



Bedroom Four



Bedroom Five



En Suite



Bathroom

Tel: 0151 727 2469  
Fax: 0151 727 4943

Atlas Estate Agents, 2 Allerton Road,  
Mossley Hill, Liverpool, L18 1LN

Email: [lettings@atlasestateagents.co.uk](mailto:lettings@atlasestateagents.co.uk)  
Website: [www.atlasestateagents.co.uk](http://www.atlasestateagents.co.uk)

These particulars are intended to give a fair and substantially correct overall description for the guidance of intending purchasers/tenants and do not constitute an offer or part of a contract. Please note that any services, heating systems or appliances have not been tested and no warranty can be given or implied as to their working order. Prospective purchasers/tenants ought to seek their own professional advice.

All descriptions, dimensions, areas, references to condition and necessary permissions for use and occupation and other details are given in good faith and are believed to be correct, but any intending purchasers/tenants should not rely on them as statements or representations of fact, but must satisfy themselves by inspection or otherwise as to the correctness of each of them.